

**AUBURN AREA RECREATION AND PARK DISTRICT
MEETING OF THE ACQUISITION AND DEVELOPMENT COMMITTEE AGENDA
MONDAY, SEPTEMBER 19, 2022, 7:00 PM**

Materials related to an item on this Agenda submitted to the District after distribution of the agenda packet are available for public inspection by contacting the District Administrator at kmuscott@auburnrec.com or by calling (530) 537-2186 (M-F).

Due to the current COVID-19 crisis, the public will not be allowed to physically attend the meeting. The public may participate in the meeting through Zoom. The link for this meeting is <https://us06web.zoom.us/j/86794002393>. The public can use this link and/or call 1 669 900 6833 Webinar ID: 867 9400 2393 to participate.

People using the Zoom website will be able to see and hear the Committee, and the Committee will be able to hear the public. The Committee will not receive any visual/video from the public. This is done to avoid inappropriate visual content at the meeting.

Questions and comments can be sent via email to the District Administrator no later than one hour before the meeting. These emails will be read aloud at the meeting and responded to accordingly. Emails can be sent during the meeting, and staff will work to ensure that all are read, however the best way to have your comment heard is through the Zoom meeting or the associated phone number.

If you are a person with a disability and need an accommodation to participate in the District's programs, services, activities and meetings, contact Kahl Muscott at (530) 537-2186 or kmuscott@auburnrec.com at least 48 hours in advance to request an auxiliary aid or accommodation.

1.0 CALL TO ORDER

Gray ____ Lynch ____

2.0 ANNOUNCEMENTS, AGENDA REVIEW, CHANGES AND APPROVAL

3.0 PUBLIC COMMENT – This is the time wherein any person may comment on any item not on the agenda within the subject matter jurisdiction of the Committee Chairperson, please state your name and address for the record (optional). There is a time limitation of three minutes.

4.0 BUSINESS

4.1 Approval of Minutes from the August 15, 2022, Acquisition & Development Meeting (Pages 3-4)

Recommendation: Review and approve minutes.

4.2 Additional Pickleball Courts/Options for Pickleball (Pages 5-44)

Shall the Auburn Area Recreation and Park District (ARD) explore options to create more opportunities for pickleball play in the District?

4.3 Amending 2022/2023 Project List and CIP (Pages 45-54)

Shall the Auburn Recreation District amend the existing 2022/2023 Project List and Capital Improvement Project List (CIP) to coincide with the FY 22/23 Budget Revision?

Discussion items:

1. 2021 – 2022 Project Activity Report **(Pages 56-58)**
2. 75th Anniversary review proposed logos and review new archival information. **(Pages 59-61)**

5.0 ITEMS TO BE CONSIDERED AT FUTURE ACQUISITION & DEVELOPMENT MEETINGS

1. Realign the parking lot at Recreation Park.
2. Adding Second Set of Aluminum Bleachers at “B” Field
3. Addition Safety Pads for Old Tennis Poles at Meadow Vista Courts

6.0 PENDING ITEMS REQUIRING MORE DETAILED RESEARCH

None.

AUBURN AREA RECREATION AND PARK DISTRICT
This agenda is hereby certified to have been posted as follows:

ADJOURNMENT

9/16/2022
Date

9:30 A.m
Time

Cathy Wajsbud
Secretary to the Board

Auburn Area Recreation and Park District
Minutes of the Acquisition & Development Committee Meeting
Monday, August 15, 2022 at 11:00 AM
Canyon View Community Center, Board Room
471 Maidu Drive, Auburn, CA 95603

1.0 CALL TO ORDER

The meeting of the Acquisition & Development Committee was called to order at 11:01 AM

ROLL CALL

Directors Gray and Director Lynch were present.

2.0 ANNOUNCEMENTS, AGENDA REVIEW, CHANGES AND APPROVAL

None.

3.0 PUBLIC COMMENT

None.

4.0 BUSINESS

4.1 Approval of Minutes from the July, 2022 Acquisition & Development Meeting

The Committee reviewed and approved the minutes from the July 18, 2022, Acquisition & Development Meeting.

4.1 Resolution #2022-21: Marriott Meadows Park Prop. 68 Grant Award Deed Restriction

The Committee reviewed and forwarded to the consent calendar for review and approval by the Board of Directors.

Discussion Items:

1. 2021 – 2022 Project Activity Report - this was reviewed by the Committee.
2. 75th Anniversary review proposed logos and review new archival information. This was reviewed by the Committee, Chairman Lynch suggested:
 - That we stay with a cleaner more retro look when creating the logo. Three of the logos were chosen because of their retro look, Golden Gate Bridge logo, Washington logo and 75th logo. The Committee ask that the number on the 75th logo to be changed by filling in the numbers with either Black, Blue or dark Green.
 - Chairman Lynch was going to look for other retro logos in the archives. It was also recommended that a picture of the very first Board of Directors and the current Board of Directors be added to the booklet that is being created.

5.0 ITEMS TO BE CONSIDERED AT FUTURE ACQUISITION & DEVELOPMENT MEETINGS

1. Realign the parking lot at Recreation Park
2. Adding Second Set of Aluminum Bleachers at "B" Field – Director Gray ask about the Second Set of Bleachers. It was explained that the bleachers are on ARD's list of projects to be completed.
3. Addition Safety Pads for Old Tennis Poles at Meadow Vista Courts – It was discussed and Chairman Lynch was going to speak with Ken Piscitelli (Meadow Vista resident) in regard to getting donations to purchase new pads for the Meadow Vista Courts. Both he and Director Gray will make donations in support of getting the new pads.

6.0 PENDING ITEMS REQUIRING MORE DETAILED RESEARCH

None.

ADJOURNED

As there was no further business, the meeting was adjourned at 11:44 AM.


Board Secretary


Date

4.2 Cover sheet – Additional Pickleball Courts/Options for Pickleball

Auburn Area Recreation and Park District Acquisition and Development meeting June, 2022; Board of Directors Meeting June 30, 2022; September, 2022

The Issue

Shall the Auburn Area Recreation and Park District (ARD) explore options to create more opportunities for pickleball play in the District?

Background

ARD currently has the following inventory of pickleball and tennis courts:

Regional Park

6 permanent outdoor pickleball courts

4 permanent outdoor tennis courts

3 indoor pickleball courts using the multi-use gym (these courts are only available at certain times)

Recreation Park

3 indoor pickleball courts using the multi-use gym (these courts are only available at certain times)

Meadow Vista Park

4 permanent outdoor pickleball courts

1 permanent outdoor tennis court

Sugar Pine Ridge Park (“Winchester Park”)

1 permanent outdoor tennis court

The continuing growth of pickleball has resulted in sometimes lengthy waits for court time.

The following options are being considered to create more pickleball play opportunities:

- 1) Make a tennis court a multi-use court. This would require repainting the surface, striping, new portable nets and some form of storage container. Crack repair should also be done before the surface is repainted, and should be done using the “Riteway” Crack repair system, or something similar. Estimated cost is \$28,000 for a single tennis court; \$50,000 for four tennis courts (both estimates based on using the “Riteway” crack repair system)
Pros: Quick, relatively inexpensive
Cons: Conflict between PB and tennis; issues with nets being left out
- 2) Convert tennis court(s) to pickleball. This would be similar to what ARD did in 2015 at Regional Park. The estimated cost to convert a set of two tennis courts, as is currently

present at Regional Park, is \$57,000. This would include using the Riteway Crack repair system.

Pros: creates permanent pickleball courts.

Cons: relatively high cost; loss of tennis courts

- 3) Build new pickleball courts. This would require finding a suitable location and more funding. In 2008, it cost ARD \$170,000 to build the new tennis courts at Regional Park. The Sunrise Recreation and Park District recently received a quote to build 3 new pickleball courts. The estimated cost for the courts, including design and construction administration was \$350,000.

Pros: brand new courts without the loss of other courts

Cons: cost

Note: the estimated costs to repair/restripe our existing courts, using the Riteway Crack system, is as follows:

1. Repair the red <u>and</u> blue tennis courts at Regional	\$40,000
2. Repair the Regional PB courts	\$33,000
3. Repair the MV PB courts	\$26,000
4. Repair the MV Tennis courts	\$20,000

A cost has not been obtained to repair the more heavily damaged tennis court at Sugar Pine Ridge Park (Winchester).

ARD currently has \$200,000 budgeted for tennis/pickleball crack repairs in FY 23/24.

Per direction from the Board, staff posted notices on the tennis courts and pickleball courts at Regional Park and Meadow Vista Park, asking for comments on some proposed ideas. This same notice was posted on ARD's Facebook page. Those notices were posted on July 13th (July 14th on ARD's Facebook page). The comment period closed on August 31st. In total, 98 comments were received during that comment period. All of the comments and a breakdown of the responses is attached.

Recommendation for the Acquisition and Development Committee

Review and discuss. Send a recommendation to the ARD Board of Directors.

Alternatives Available

- 1) Review, discuss and bring the item back to a future A&D Committee meeting
- 2) Take no action

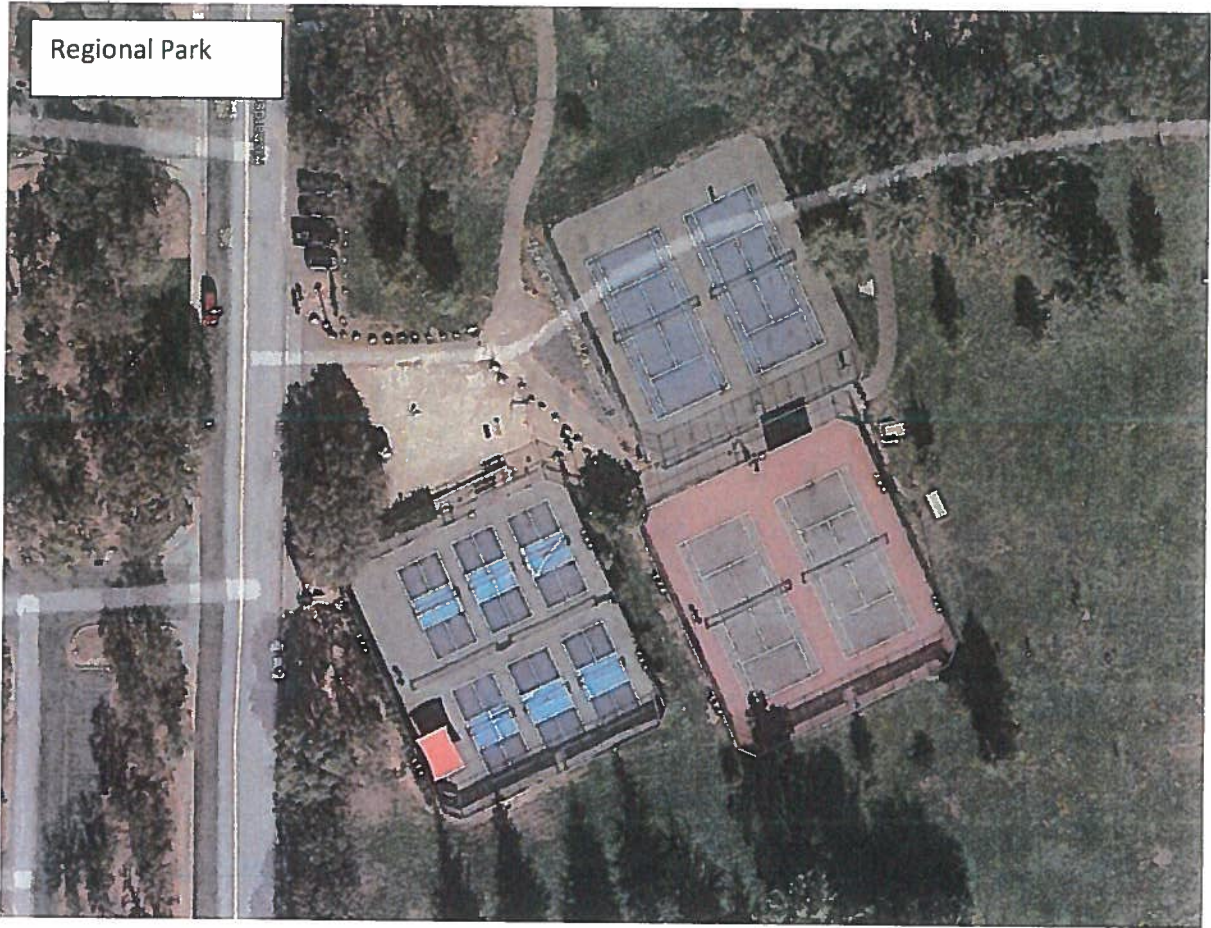
Fiscal Impact

As described above.

Attachments

Aerial photos of the Regional Park and Meadow Vista Park pickleball and tennis courts
Copy of notice posted on tennis, pickleball courts and ARD's Facebook page
Pickleball/Tennis Court comment summary
Pickleball/Tennis Court comments
Article on tennis/pickleball court crack repairs

Regional Park



Meadow Vista Park



NOTICE

The Auburn Area Recreation and Park District (ARD) is considering making changes to the tennis courts at Regional and Meadow Vista Parks.

These changes may include, but are not limited to:

- Making the older (red) tennis courts at Regional Park multi-use courts. This would entail adding in lines for pickleball play and the use of temporary nets.
- Converting the older (red) tennis courts at Regional Park to create permanent pickleball courts
- Making the tennis court at Meadow Vista Park a multi-use court. This would entail adding in lines for pickleball play and the use of temporary nets.
- Converting the tennis court at Meadow Vista Park to create permanent pickleball courts.

ARD would like to receive your input and feedback on these possible changes. You may send your comments in the following ways:

- Via email to Kahl Muscott kmuscott@auburnrec.com Email is the preferred method to receive comments.
- Via phone by calling Cathy Warford at (530) 537-2187
- Via U.S. Mail. Please send your comments to
ARD attn: Kahl Muscott
471 Maidu Dr. #200
Auburn, CA 95603

All comments must be received by 5pm on August 31, 2022



Pickleball / Tennis Court Feedback

98 messages received (some were open to multiple solutions stated below)

29 messages were in favor of protecting Tennis Courts

67 messages were in favor of expanding Pickleball Courts

2 messages neither for or against

Meadow Vista Park

14 Opposed any change to the Tennis Court at Meadow Vista Park

7 Requested that the one Tennis Court at Meadow Vista be converted to Pickleball Courts

15 Were open to a Dual use Tennis/Pickleball Court in MV, some with hesitation & questions

7 Didn't want any change to existing at Meadow Vista, but said ARD should add NEW PB Courts

Regional Park

13 Opposed to any change to the Tennis Courts at Regional Park

40 Would like to see, or are open to converting 2 Tennis Courts to Pickleball Courts at Regional

5 Stated if there is any conversion, please keep the lighted Red Courts for Tennis only at Reg.

10 Would like to see all Tennis Courts converted to Pickleball Courts at Regional (*not clearly stated*)

10 Were open to Dual use Tennis/Pickleball Courts at Regional, some with hesitation & questions

15 Build more Pickleball Courts at Regional

3 Think Pickleball is a fad

8 Want much needed repairs made on Tennis Courts

3 Want Pickleball Courts resurfaced

Miscellaneous

5 Mentioned lights for the courts without them (Blue Courts at Reg and Courts at MV)

4 Want more shade

6 Just learning Pickleball

3 8+ years playing Pickleball

In favor of tennis/not removing or altering tennis courts

1. Dear Kahl Muscott,

I would like to give my thoughts on the meadow vista courts. I love to play pickle ball BUT I also love tennis and appreciate courts that do not have confusing lines.

I understand that we need more pickle ball courts but please NOT at the expense of losing the tennis courts.

The Parks are wonderful and we really appreciate all the wonderful things we have know this area.

We need to be careful not to wipe out something that I think appears to be coming back (tennis). I see young people who were drawn in by pickle-ball but appear to be coming back to tennis.

Thanks for your time,

MG

2. I am not in favor of permanently doing away with the tennis court at meadow vista park. I play there multiple times a week and often see others playing as well.

Additionally, I am not in favor of making the red tennis course at auburn regional multi-use as they are the only courts in the area with lights.

Please consider the feedback!

E

3. Will lights now be installed on the other tennis courts for our citizens who play tennis at night?
Can we tennis players remove the temporary. nets on the red court when playing tennis day or night?
Will additional tennis courts be built to accommodate the many tennis players who are now and in the future who are now playing and will be plating tennis?
Are the red tennis courts going to be repaired to remove the dangerous cracks and plants that are injury causing?
SS

4. Good morning Kahl,

I am writing to express my opinion for keeping one tennis court as is at Meadow Vista park.

The conversion of the upper court to pickle ball court has already added 4 courts for pickle ball players, leaving only 1 for tennis players.

We recently moved to Meadow Vista and one of the things we feel so lucky about is having a beautiful, public tennis court so close to home. We play tennis most mornings during the summer and about 3-5 days a week during school.

Thank you for entertaining comments and input on this issue.

JB

5. Hi,

This is in response to the notice posted on the gate at the Meadow Vista tennis court. Please, please, please leave the court designated solely for tennis.

I play tennis there twice a week. There are already three pickle ball courts and just one tennis court. When pickle ball encroaches on the only tennis court, it will be the end of tennis in Meadow Vista park. Please don't modify the tennis court for "multi-use."

NB

6. Dear Mr. Muscott

I saw the attached ARD post on Instagram last week and wanted to share my point of view with you about the proposed changes.

My husband and I live in Auburn and are active social tennis players. We struggle to find a useable local tennis court on which to play our USTA or SATA matches and our social matches or tennis practice.

Placer High School has 6 courts, only four of which are in good enough condition to use, given two of them have patches of broken surface material. Even the four that are usable have significant cracks in them. Obviously these courts are only available when the school is not in session. However even when they are available, Coach Tom Isaac often dominates use of them with his fee-based clinics which further limits the availability of those courts.

Regional Park tennis courts are the only freely available tennis courts in Auburn. Losing two of these courts would greatly diminish the ability for residents to play tennis in Auburn. Sadly they are in very poor condition which is one of the reasons many recreational tennis player don't use them. We would be delighted to use them if they were usable.

The MV Park tennis court is in terrible condition and is practically unusable even for practice.

My preference would be that ARD will repair and resurface the Regional Park and MV Park tennis courts so that there are five useable courts for recreational tennis in Auburn. Removing any of these courts is not reasonable for the Auburn tennis community who have no other options locally. The Auburn Racquet Club charges premium membership fees for tennis members which are unaffordable for many people.

As residents of Auburn who pay significant property taxes we request the portion of our taxes that go to ARD are spent with consideration of the need for useable tennis courts.

Thank you for taking input from the community.

AR

7. Hello, Mr. Muscott. Your name and email address were posted near the last remaining tennis court in Meadow Vista Park. There used to be 4, but 3 courts have been converted into pickle-ball courts. Now it appears that the last remaining tennis court is intended to follow suit. Please, don't do that! There are no other tennis courts in Meadow Vista, and often all three of the pickle-ball courts are empty. We really need at least one open, public tennis court in Meadow Vista. We don't need 4 pickle-ball courts, especially when any average week or weekend day shows no one on the 3 pickle-ball courts that are already there! This is a sincere request by a Meadow Vista resident to keep the last remaining tennis court for tennis! Thank you.

PP

Meadow Vista, CA

8. Hi Kahl,

I am Auburn resident and play tennis at Regional Park regularly. I saw the notice on the tennis court that ARD has a plan to covert some tennis courts to pickleball courts. I understand that sometimes pickleball courts may get crowded, but tennis courts can also get crowded time to time. There is an empty space can build two to three additional pickleball courts, as marked red square in the picture below. So please do not take away the tennis courts, at least not the courts at Regional Park.

If you have to convert tennis courts, please make them multi-use, do not make them permanent, and give tennis player priority if the other pickleball courts not full.

Thank You!

HW



9. Hi,

After reading the proposal for the courts at the park I would like to share my take on things. The tennis courts are in pretty bad shape which is one of the reasons why they may not get used as much. As a tennis player I would like to see at least two tennis only courts. The pickleball lines are a big hinderance when playing tennis. I

think if the courts were in better shape and there were shade structures you would attract more tennis players. I played in the tournament that the park put on, it was really fun and I think holding more tournaments or lessons/camps would also attract more tennis players. Losing all of the tennis only courts would be very sad!

Thanks,

K

10. Dear Kahl,

This email is important for the future of Auburn tennis for us, our friends, guests and families to be able to play tennis on the remaining few public tennis courts in Auburn. The Auburn Recreation and Parks District has already spent our limited tax dollars to permanently convert 2 of the 6 courts at Auburn Regional Park (Richardson & Dry Creek) and 1 of 2 of the courts at Meadow Vista Park (Placer Hills Rd) into Pickle Ball courts. That already gives the pickleballers an 8:4 and 4:1 advantage of courts at each location, respectively. BUT THEY WANT MORE! To my knowledge, these remaining courts are the only courts available to the general public aside from the H.S. which obviously aren't always available to the public, e.g. weekdays. ARD is being very disingenuous saying that these are not permanent and are somehow for multi-purpose. As you can see from the photos, ARD has permanently installed (cemented) post sleeves into the courts and resurfaced them without any tennis lines/markings. So, not only would you have to remove (4) nets, you would not have lines and have dangerous steel sleeves sticking out of the ground to trip on. At the Regional Park, they gave the pickle ballers the best two lighted courts closest to the parking lot, resurfaced the courts, put in a shade structure, grand stands, water and bbq area yet left the other tennis courts farthest from the street and parking in terrible condition with slick and cracked surfaces and old ratty nets in a lot of cases without even a net strap.

Fast forward to the notices that are hung on the gates of these two parks (see photo #1). They play on converting more courts to either permanent pickle ball or "general purpose" which we know is a misnomer at best and dishonest at worst. Most of the time the pickle ballers only come for a few hours a day a couple days a week and permanently occupy the courts, don't follow rules, etiquette, time consideration, noise, gates, sitting on our courts or walking through them while we're playing. If the remaining courts get permanently converted then we and our children, families, friends, guests and visitors will have little to no access to the sport we love on the courts our tax payer dollars were used to build tennis courts. Please use our tax dollars to leave the courts dedicated to tennis and properly maintain them, including resurfacing, nets, lights, cleaning, etc. and no more conversions to pickleball, temporary or permanent. If there is a new need for pickle ball courts, please build them separately. Pickleball can be played on any flat surface with court lines, indoors, driveways, parking lots, cement, asphalt and even wood, e.g. basketball gym floor. The same cannot be said for tennis. Furthermore, the courts are dirty and not well maintained, cracks, dilapidated nets (torn and no straps), are dangerous due to slippery conditions and cracks. Please spend our tax dollars for proper maintenance and care and more people will use them! Lastly, tennis is a universal sport and played in our high schools, which is why our youth need public access. Please do not take this away from them. Pickle ball lines are distracting and slick/slippery and should not be on our dedicated tennis courts. Since the actual official size pickle ball courts out number the tennis courts 4:1 already, please do not impose or convert any more tennis courts, temporarily or permanently.

Sincerely,

CP

11. Hi Kahl

There are still many people in the tennis community in Auburn who enjoy using the courts at Regional Park. In fact it's one of the few remaining public courts. Please retain the few courts that are there for our use.
Thank you
DA

12. Hi there,

I'm writing to you because I strongly favor keeping the tennis courts in Meadow Vista. I am a Meadow Vista resident and I use the tennis courts regularly along with my young kids and friends.

Thank you for asking for community input!

Sincerely,
MB

13. Hello,

I would like to strongly request that you don't remove the red tennis courts at Auburn Regional Park and replace them with pickle ball courts. That would leave only two courts for tennis and it is not enough to meet the needs of tennis players in the region. When my husband and I play there are plenty of times when all four courts are taken in the mornings and on the weekends (maybe not in the middle of the day because it's too hot). We live in the Cascade Crossing neighborhood and pay A LOT of taxes and don't feel there are a lot of amenities for the amount of taxes we pay. As it is we have to drive 15 minutes to get to these tennis courts because there are no other public tennis courts in the area. If we drive down there and are unable to play because there are no free courts, that would be extremely disappointing and upsetting as we are retired and this is a necessary form of exercise for us. My husband and I don't feel it's fair or appropriate to take away amenities from one group to give to another when we are all trying to enjoy a quality of life and we more than pay our fair share in taxes. If you HAVE to create more pickle ball courts, please at least make them a mixed use so we don't lose these courts for tennis. Thank you for your consideration in this matter.

Regards,
DH

14. I am writing to submit my comments regarding the proposed changes to the tennis courts at the Regional Park and the Meadow Vista Park. These appear to be the only parks that provide tennis courts. There is only one tennis court in Meadow Vista, and only four at Regional Park. There are many many pickle ball courts. There are plenty of pickle ball courts. If you eliminate the few remaining tennis courts and replace them with pickle ball courts, the only option for tennis players is to pay a membership fee to access courts in a club or gym.

I play tennis, not pickle ball. I pay taxes. Some of my taxes go to maintain the parks. I require tennis courts. I know I am not the only tennis player in Placer County as the courts are often full when I go to use them.

Please do not eliminate the few remaining tennis courts.

Sincerely,

C

15. Good morning Kahl,

I would like to express my feelings against the conversion of tennis courts to pickle ball courts. I know pickle ball is becoming a popular activity, but the reality is that tennis was a fun form of recreation and except use long before pickle ball became a fad and I believe will remain so long after the popularity for pickle ball fades. I often play tennis with my father and have done so for 25+ years. Playing tennis with him in Auburn and Meadow Vista over the years has brought a lot of great memories, including when he was rehabilitating from severe medical issues. If the courts at the parks in Auburn and Meadow Vista are converted then where would we do that? We can't afford to play at a private club. Maybe the pickle ball players should form a private club and leave our tennis courts alone. Even painting new lines for "dual purpose" courts will basically end our ability to play, as the pickle ball players outnumber the remaining tennis players and we'd never get a turn. We have no problem waiting a turn, as long as that turn eventually arrives. Please consider those of us who don't wish to participate in this passing trend.

Thank you,

JB

16. Hello:

I just got back from Tennis in MV park where I noticed a sign announcing further demise of Tennis facilities in the area. First and foremost, I am not in support of this effort and will fight it every way possible. It's clear that pickle ball is favored over Tennis for the niche 'club' that play on Fridays and Sundays. Other times, the courts are virtually empty.

ARD needs to be fair in how it spends money for maintaining parks and sporting facilities. It seems clear that the pickle ball courts have had much improvement compared to hardly anything on the Tennis courts. I see people drive up, unload, look at the condition of the court, this pack up and leave.

At this time, you have 4 well maintained pickle ball courts and one poorly maintained tennis court... Sound fair, I think not. So, taking away the only one Tennis court in the park is inappropriate and frankly biased to a specific group and sport.

I see that the pickle ball court can be converted in terms of net orientation. Give me a break, no Tennis court lines so how can it be a tennis court. Also, to remove four pickle ball nets and posts to create the Tennis court (without marking) is not a viable converting court.

I adamantly disagree with the proposal and if it is successful, I and a few friends will actively convert each pickle ball court for Tennis every Friday through Sunday and have a line of Tennis players to step in before any of the pickle ballers get on the court. This is not what I want to do or encourage on social media if fairness in the decision allows the Tennis court to stay and repairs and maintains the tennis court at least to the standard and frequency of the pickle ball courts. However, we are prepared and able to fight fire, with fire. We can completely saturate both courts with tennis every day if needed.

Tennis has been around for years. It's much preferred by the younger generation and should be supported. Other facilities are equally poor, Regional park and Winchester (almost unplayable). FYI – I am 55 plus and intend to play Tennis for another 30 years. Not that I will not try Pickleball, I think they can both coexist as long as the allocation is fair and not favoring pickle ball as it is now.

I am also curious to how ARD became so biased and the links to the local players who are actively pushing for more pickle ball courts. As this is public record, I should be able to investigate those links as needed and share publicly on social media and the local press.

Please think careful about your deception and promote Tennis as much as Pickle ball.

KG

17. My name is SH and I just read the notice on the auburn regional park tennis courts about converting the red courts into pickle ball courts. I know pickle ball is popular but so is tennis. Just having two tennis courts available seems dispropo... *(email ended)*

18. Dear Mr. Muscott-

I want to strongly plead with the Auburn Recreation District commissioners to keep the one tennis court at Meadow Vista Park and the two tennis courts at Regional Park as tennis courts.

I have lived in Auburn for 40 years and have seen the number of public (and private) tennis courts markedly decline over that time period. As a tennis player since high school I have a great affection for the sport and find it much harder to find an open court since the advent of Pickleball. I have had multiple occasions when I have arrived at both Meadow Vista and at Regional Park (usually with 3 other players) to find the tennis courts occupied and have been unable to play. There is a "public" court at Winchester which is in terrible condition and there are no other public options for tennis during most times for tennis players in the greater Auburn area. I am aware of the popularity of pickleball and the amazing growth of the sport. There are large groups of pickleball players for brief times of the day on many days on the courts adjacent to the tennis courts mentioned above. Pickleballers seem happy to sit courtside and chat and get into a game soon. Pickleball is a tremendous fad which offers both social and health benefits to many people who would not otherwise be active which is a benefit to them and to our larger community. However, there are rarely any pickleball players on the courts outside of the preferred social gathering times and many tennis courts have already been transformed to exclusive pickleball courts. I believe it would be an enormous mistake to make further changes and further limit opportunities for local tennis players. Please do not be so short sighted to think that further abrogation of the already limited number of courts for tennis players would be a good or fair short term or long term solution. If more pickleball courts are needed then please build them in adjacent flat territory but please do not take away more tennis courts. Tennis is a great and enduring sport which has a steeper and longer learning curve so is less prone to fads than pickleball. . Transitioning tennis courts to pickleball courts will be a poor decision. Thank you for considering these arguments and for serving and representing the needs of your constituents.

GL

19. Good morning Kahl

I recently saw the signs posted at the tennis courts in Meadow Vista and would like to offer comment. I understand the loud and numerous voices you are probably hearing about wanting more pickle ball courts, because many of my friends play. I'm 66 and part of the demographic that loves pickleball and loves to make

themselves heard. I want my voice to speak up to retain tennis courts at the locations mentioned, especially Meadow Vista, since this is our "home court." I'm at the park often with family, grandchildren and friends and when the weather is favorable we bring racquets to barbecues or gatherings. We are teaching grandkids to play and my son and husband often meet friends at the Meadow Vista courts to play. It is important to note that sometimes they have to go somewhere else because the single court in Meadow Vista is already in use. I often see teenagers meet to play on the court. A tennis court does not need to be watered for occasional use like the ballfields you maintain, and tennis is a sport that will continue to appeal to all ages and generations. I would hate to think that tennis players will only find courts at private clubs.

Please retain tennis courts at all your facilities, and especially our family and friends are hoping that one court is maintained at Meadow Vista Park. The multi-use idea seems reasonable, though our concern with this is that the one tennis court will always be in use for pickleball at the most desirable morning and evening times.

Thanks for your consideration.

CB and SB

20. Hello, I just saw the sign to convert the last tennis court to four more pickle ball courts. Hard to believe that pickle ball players want 8 courts and leave us tennis players with no courts. I use that court often and normally I have to wait for the people on the court to finish. Right now with the temperatures there is nobody on the court between 11 and six but there is also nobody on the pickle ball courts during that time. I live in Meadow Vista and I don't see why I would need to drive to another community to play tennis when I had two courts now I have one court and there is a discussion about taking that court. What can I do to stop this from happening, what meetings can I attend.?

CK

Follow up email on 8/23: Hello again. Wanted to let you know that I went to the tennis court last night at 7 o'clock and of the four Pickleball courts only one was in use. I went back to the tennis court this morning at 10 AM and again only one of the 4 courts was in use. There may be a problem over at regional Park and there may be more tennis courts to utilize there but it makes no sense to take our only court when the Pickleball courts are not being fully utilized here.

21. Thanku, names nick, tennis and pickleball, mornings r best, hence an hr and half of busy, tennis AND pickleball, that being said, please Don't sacrifice the really one and only proper tennis court, in mv., pickleballers can rotate in, on their courts, I play tennis with 80 sumthins, don't make em walk to winchester! Thanks for your time and consideration s!

NS

22. Hello I am a senior and have lived in meadow vista for over 30 years. We have taken our kids to play tennis and now our grandkids.

I feel like having one tennis court for multi age groups is essential. We already have pickle ball courts for seniors and others, and we need to think of all the age groups. I've seen families come and play tennis with their kids and i still like to play too!. Lets think of the whole community and not just seniors.

Thanks for your time

DM

23. Hi Kahl,

I am writing regarding the tennis courts at rec park, please do not remove all the tennis courts, my family and I use the courts several times a week. We also use the lighted courts in the winter when it gets dark earlier, these are the only courts with lights since the placer courts coin machine does not work.

I appreciate that there are many pickle ball players but there are still many tennis players out here too

Thank you

TR

24. Dear Kahl Muscott,

I have seen the notice concerning the proposed changes to tennis courts in the ARD, which is posted on the gates at the Regional Park. I wish to comment on this ill-founded proposal.

For some time now, the promoters of pickleball have been spreading the myth that tennis is a dying sport. This is far from the truth. Sadly, it is the tactic of the promoters of pickle ball, to have as many tennis courts as possible converted to pickleball courts to force tennis players to join their sport. Unfortunately, they have been able to get persons of political influence to assist them in achieving their objective. In fact, tennis is a very popular sport which is rapidly expanding at the highest level internationally with more and more tournaments and leagues being added each year from intermediate levels to the highest level of international professional tournaments. The sad truth is that although the USA has the resources to be a world leader, we are in fact falling behind many much smaller countries, because cities, counties and states in the USA are not providing the support and facilities to develop players with the talents to reach and succeed at the highest levels.

The need is actually for more, not less, tennis courts in the ARD area. In Auburn, although we have a Racquet Club with 8 courts, there are many people, especially youth that have the desire and potential to become good tennis players but are unable to afford the cost of membership at the tennis club. Furthermore, on most mornings all the courts at the club are taken by regular playing groups of adults and seniors. Although the courts at the Regional Park are vacant, that is the nature of facilities for this sport. On most mornings of the week, at least three and sometimes all four courts are being used for tennis at the Regional Park and in the late afternoon or evenings all courts are often in use with players waiting for a court. This is frustrating for both the players on court who are being pressured to vacate a court and those waiting for a set or match to be completed.

Multi-use courts are not a good or acceptable alternative. The Regional Park courts are sometimes used for special tournaments, including USTA events. Multi-use courts are NOT suitable or approved for events such as these. Even for recreational play, when players of a higher level are playing and balls are being hit at speeds of 70 MPH or more, multiple lines cause a lot of confusion. This issue would also apply to pickleball but to a lesser degree because ball speeds are never at such high velocities.

In conclusion, all the current proposals for the tennis courts are opposed for the reasons stated above. If the numbers of persons desiring to play has increased above the level of the available facilities, then it is time for the Auburn Recreational District to consider the building of additional special purpose pickle ball courts, which are in fact a lower cost per square foot to construct.

Furthermore, it is noted that there is accelerating deterioration occurring to the four tennis courts at Regional Park, especially serious cracking that needs to be repaired and steps taken to prevent its' recurrence. Also, the

paint on the two green and red courts is very old, weathered and is almost worn away. This needs immediate attention before the base material becomes weathered and rough, resulting in a much more costly renovation.

You are respectfully requested to consider all the above response when considering the best way to move forward.

Kind regards,

JS

25. Kahl Muscott,

Recently, I read the notice at the Auburn Regional Park posted on the Tennis court noting potential changes to provide more pickleball courts. My wife and I have been playing doubles tennis in separate men's and women's groups at least twice a week for more than five years and have enjoyed the use of the four tennis courts. We have appreciated the attention that Jesse Williams (copied) from ARD has provided in the last several months by replacing the tennis nets on these courts. He has been quite attentive.

Those of us that currently play tennis at the Regional Park realize that there has been an increased interest in pickleball and have friends that currently play pickleball at Regional Park. In conversation with these friends, we learned that the pickleball players that have read about the proposed change are attempting to make this a "popularity" issue by soliciting as many people as possible to send E-mails to address this topic. I suspect this behavior is inevitable given the way our culture routinely makes decisions, but I hope ARD intends to make the most inclusive and beneficial decision, which at times, may not be the most "popular" choice.

Based on the "Notice" that was posted, I would like to ask that you consider the following feedback:

Recommendation - Do not repurpose any Regional Park Courts (Not mentioned in the "Posted Notice")

Presently, at the regional park, there is enough space for 24 pickleball players to participate (6 courts of doubles) and from 8 tennis players (4 courts of singles) to 16 players (4 courts of doubles) at any given time (Pickleball is a predominantly "doubles game", while in tennis, singles is frequently played). Accordingly, if the number of tennis courts at Regional Park is further reduced to two or three courts, then the opportunities to play will also decrease. In a sense, the lack of tennis courts at ARD will become the key impetus for fewer tennis players to go there to play. Creating a greater demand for tennis facilities is not the solution for addressing the higher demand for pickleball.

Historically, with respect to the time when there was an increased need for tennis, how did ARD address this? I believe an initial solution was to have a process that enabled a limited waiting time for the next group of players (In fact, this "tool" still exists on the fence of the "red-green" courts and involves "placing your racket" in a waiting line). When the need for tennis continued to increase, I believe this led to the construction of the two newer courts. Is this being considered for pickleball? Why not expand the existing pickleball courts by adding three courts on the uphill side (or the down hillside) of the existing courts? What about considering adding pickleball courts to the recently annexed area of the Regional Park that is being developed? Why not aggressively pursue multi-purposing indoor (or creating outdoor courts) at the Recreation Park (it would benefit those that live in South Auburn). Has ARD considered adding to the existing courts in Meadow vista or at Winchester?

I suspect the reason "adding courts" was not mentioned in the posted notice was based on finances, but perhaps this should be more fully pursued and disclosed to the public.

Response to Recommendations (Items in the "Posted Notice")

Although reducing the number of courts should not happen (per the comments above), if it does happen, then the only option that should be considered is to make a "blue-green" tennis court multi-use, because the "red-green" courts are the best for tennis. For those of us that play tennis, the "blue-green" tennis courts are not the best tennis courts at the Regional Park. The primary reason these courts are worse than the "red-green" courts are the long and wide linear cracks that have moss and weed growing in them. These cracks are in the service boxes and are therefore "in play" for both singles and doubles. These cracks are so "wide" that the trajectory of the tennis ball changes dramatically when it lands in these cracks often making the ball unreturnable. Although there are more cracks in the "red-green" courts, these cracks are narrower and generally tighter, thus not affecting the ball as dramatically. The primary reason that the "blue-green" tennis courts are the first to be used in the summer mornings is the combination of the shade and the the poor painting of the lines on the "red-green" courts (At some point, many years ago, the lines on the red-green court were incorrectly painted over existing lines make them wider and more difficult to detect or "call")

Also, if the "red-green" courts become multi-purposed for pickleball, then the potential for using lights at s diminished for tennis player (the current pickleball courts are already lighted) since there will be competition between pickleball and tennis for court use on the lite courts. Furthermore, the warm-up backboard on the "re-green" court will also become less available to tennis players.

Accordingly, if the decision is to multi-purpose any Regional Park tennis court, it should be a "blue-green" court. The "red-green" court should have the cracks filled, the court repainted, and a wind-break (shade cloth) added to the east fence. These should be used only for tennis so that at least there are two courts that don't have cracks, have a warm-up back board, and are available lighted play. ARD will also need to establish a procedure for waiting times with both the tennis and pickleball players.

General Comments and Concerns

Over the last several months, those of us that play tennis have witnessed the relative lack of attention by ARD to the tennis courts in comparison to improving the pickleball courts. We noticed when a larger bench was taken from the "red-green" tennis court and moved to the pickleball court while a "small bench" (not suitable for four doubles players to sit on) was swapped. We see the large seating area with a shade structure on the pickleball court as we sit in the sun and notice that there is very little debris on the pickleball court as we remove dog-droppings, debris made by broken sprinklers, or mulch from lawn mowers blown on to the tennis courts.

Recently, when the cracks on the pickleball courts were being repaired and lines repainted, we asked "What about the tennis courts?" We were told that there was only funding for doing the pickleball courts and that the tennis courts were next. Now, we learn that potentially there may be fewer tennis courts, diminished opportunity to play under the lights, without any commitment to resurfacing the tennis courts. As noted above, can ARD at least keep the "best" (red-green) tennis courts for tennis use only, fill the cracks, repaint the surface, and add a shade/wind cloth?

Thank you for your consideration and please let me know if you have and questions,

Regards,

PM and LM

26. Good Afternoon,

My name is HB and I am writing to you in regards to the tennis courts. I am a former graduate from Placer High School and I played tennis at a Division II School in Hawaii. I have lived in Auburn since 1999 and am very active

in our community and love Auburn. My daughter currently attends Placer High School and is on the Varsity Tennis Team. On the weekends we go and play tennis at the Regional Park. The last few times we have gone in the evening there are not enough courts to play or it becomes too dark and there are no lights for us to see. I am asking that you do not change our tennis courts as it has already been difficult to play with the lack of lighting and how poor the courts are. If you would like to add pickleball to our community I ask that you do it a different way. Most of the local schools k-8th grade do not have tennis courts to practice on and several families can not afford to play at the local Auburn Racquet Club. Tennis is a sport you can play your entire life. Placer High School already needs new courts for 5 and 6 and has been asking for years to fix the problem. Please do not change our tennis courts into multi-use courts. It is very hard to play with all the multiple lines as a tennis player. I ask that we find another way to add pickleball into our community. I thank you for your time to read over this email and hope that you consider my thoughts before making a decision in our community which will impact several tennis players throughout Placer County.

Kindly,

H

27. Please keep the tennis court how it is.

AV

28. Hello,

My name is LH and I'm a resident of Meadow Vista. My family and I play on the Meadow Vista tennis court 5x per week. This is the closest tennis court around and we would be very sad if they were converted to pickleball courts. There are already 4 pickleball courts at the park, there does not need to be any more or add in lines on the only tennis court left as it confuses players. I hope you consider this message. Thank you

LH

29. Hello,

Short version:

Please do not eliminate the only tennis court in the Meadow Vista Park. I feel the best compromise would be to paint it so it could also be used for pickleball, but only provide a pickleball net upon request when there is the occasional tournament, etc. Having it readily/easily changeable will just lead to conflicts.

Long version:

First, I do want to thank you for allowing those of us who may not have the spare time to be as active/vocal as others in our community some means of input on a community facility, rather than simply going with the request of one group.

I understand that there seems to be more interest overall in pickleball than there is in tennis, and why shouldn't there be. It's easier/requires less skill to master, requires less running and exertion while still actively participating, and is designed in both rules and equipment to cap a player's capabilities. Each of these traits

encourages people (and one at-risk demographic in particular) to get outside and do something active with others. I myself play and enjoy both, along with several others.

If more people are interested in playing pickleball, then of course there should be more pickleball courts than tennis. However, to completely remove all tennis courts from a park is to completely ignore those of us that play and enjoy tennis (and frankly motivated me to include that list of traits in a way that could be heard as condescending). In Meadow Vista, there are four times as many pickleball courts as tennis and because of this, all of the tennis courts are taken just as often as all of the pickleball courts. Were the last one to be converted there, where is the next closest public court? Is it going to mean driving a distance? Is it going to be more isolated so that if you are going there, that is all you are doing?

Further, having access to public tennis courts allows kids from any financial background a chance to learn and excel in a sport that is offered at their high school (insert list of extracurricular participation benefits here), rather than only those that can afford a private club or live in an affluent subdivision. I'm sure the local high schools also appreciate the chance for those students to have some court time earlier than the tryouts for the team and maybe even develop some talent.

While I am obviously against completely removing the last tennis court at the Meadow Vista Park, I would also recommend against establishing a "Multipurpose" court that is easily set up by anyone from the public for pickleball. In the ideal world, this would only occur if all of the permanent pickleball courts are occupied. But in the real world, it will be set up frequently to just avoid being in the same fenced area as another party. Since tennis requires the whole court, just one pickleball setup makes it unusable for tennis. Perhaps a multipurpose court painted, but a net that is only available upon request, when there is that occasional pickleball tournament, could be a compromise.

I have primarily addressed the Meadow Vista Park as that is the one with which I am most familiar. Regarding the Regional Park, I would say that at least there would still be the newer, blue tennis courts to play on. So, if the participation is truly proportioned as to justify temporary or permanent conversion (and not just a louder group), then it would seem fair to reflect that in the number of facilities. Again, as long as there are some specifically reserved for each.

Thank you again,

NC

In favor of pickleball/adding more pickleball

1. Hi Kahl,

I feel that the cheapest way to go is to see the 3 tennis courts at Johnson-Springview in Rocklin. They have the lines of Pickleball inside each of the tennis courts. They also have an adjustment that can raise or lower the net 2" in the middle where it slopes in both tennis and Pickleball. Outside of getting used to the different lines (which takes about 5-7 minutes of the first time you play on it). This could be done on an inexpensive trial basis.

In Meadow Vista, we have two (2 couples) who have for a few years played tennis on Monday mornings for almost 2 hours. I have spoken to them and they probably will be giving Pickleball a try within the year.

On Wednesday mornings there are 4 elderly and retired guys who play 1 set of tennis and then walk up to our Pickleball courts to play some Pickleball. They have been doing this for years.

There are no other tennis players who REGULARLY use the court in Meadow Vista.. Once in awhile a guy will bring his tennis ball pitching machine to practice with.

Outside of that, there are NO regular tennis players playing on the court in Meadow Vista (at least in the morning before it gets hot)

Since I live about 1/2 mile farther away from the park than Gordon Ainsleigh, I do venture over to the park in early afternoons and some evenings during the summer will go to play Pickleball before dark.

K

2. I strongly support the expansion in the number of Pickleball courts in Auburn. Interest in this sport is exploding. I see new players all the time. Based on my own observations the tennis courts at Regional are underutilized and one of them should be converted into PB courts. I encourage ARD to collect data on the usage of these two courts ASAP. I would also like to see ARD find a source for GOOD indoor balls. Players prefer orange but lime green works ok. Yellow gets lost in the morning light glare. I'm sure Mike Lynch could be helpful in determining what is a good quality ball. I'm looking forward to the ideas for expansion. I want to thank you and all the ARD Staff involved in accommodating this growing sport, maintaining the courts and making sure we have proper nets and balls. Thank you.

EP

3. Hi Kahl,

Please convert the tennis courts at Regional to permanent pickleball courts. I play at Regional Friday and Sunday mornings, and Tuesday nights. The pickleball courts are usually full. I rarely see anyone using the tennis courts.
Thank you,
BF

4. Hi Kahl,

We understand you are the person to send comments to regarding possibilities for converting the tennis courts at Regional Park.

We are homeowners who live in the Deer Ridge development just on the other side of the park. I also love to play pickleball (and my wife is just learning) but basically we have to drive down to recreation park to play indoors because the courts at regional are often full in the mornings or evenings and there is no set outdoor open play schedule at Regional Park that I have discovered.

Groups of friends play there, and I am trying to connect with them, but it would be so great if we just had more options for open play via the tennis courts. I'm sure there must be tennis players in the area who of course want to keep using them, but if there's a way to make them more flexible or some thing for pickle ball (I've read that it's the fastest growing sport in the country) we would really appreciate it!

Thank you,
CA and DC

5. Hi there--

Just wanted to support the idea of increasing the number of pickleball courts at Regional. I play there often and have seen the demand for courts skyrocketing. It's important to get ahead of it. My son, who is a talented player in the Los Angeles area, has given up trying to get a court. He says they are all too impacted to even try. I'd hate to face the same problem.

Also, because I'm at Regional so often, I see how little use the tennis courts get. There's rarely anyone even there, so it definitely makes sense to change at least some of them over.

Thanks for your help with this project and for taking community input!

All the best—B

6. Dear Mr. Muscott,

I am in favor of converting the old (red) tennis courts at Regional Park to permanent pickleball courts. The existing PB courts there are used extensively, usually with folks waiting to play, while the old tennis courts seem to be rarely used. Regarding the Meadow Vista tennis court, since it's the only one in the area I would like to see that converted to a multi-use court with pickleball lines added.

I started playing pickleball in Meadow Vista more than 10 years ago when those were the only courts around. The sport has grown exponentially since then, and I see new faces nearly every time I play. New courts would be money well spent.

Thank you,
MW

7. Hi my name is ST and I play pickleball at Regional park 3-4 times a week. I saw the notice with the options that you are considering for the park and I would like to vote for converting the tennis court to permanent pickleball courts. The current pickleball courts are often full with lots of people waiting to play and the tennis courts are

usually empty. Converting a tennis court to permanent pickleball courts would serve the community well.
Thanks for the work you do.

8. Hi!! I'm in for Option 2!! Convert 2 tennis courts for 6 pickleball courts. It will be amazing and put us on the map for tournaments and as a major destination!!

Fingers crossed! We desperately need more!!

Thanks for your consideration!

AF

9. I choose option #2, turn 2 tennis court into 6 pickle ball courts
JG

10. I choose option #2- turn 2 tennis courts into pickleball courts.

KS

11. 2 votes from RC and BC for option 2 - to convert 2 tennis courts to pickleball courts.
Thanks

12. Mr. Muscott,
Specifically, for Auburn Rec, I vote to convert two tennis courts into 6 pickleball courts.
Thanks, MB

13. Kahl,
I am responding to the flyer posted at Regional Park regarding options being considered by ARD to expand Pickleball.
I am an avid Pickleball player who occasionally still plays tennis.
I think the best option is to add lines for pickleball to all 4 tennis courts and leave them as tennis courts that could accommodate pickleball play as needed. The existing tennis nets could be lowered 2" whenever someone plays pickleball and raised back up for tennis.
The choice in line color for pickleball on the tennis courts could be unobtrusive (yellow for example) so as not to detract from the tennis experience.
I don't like or think temporary nets for pickleball is a good long-term option.
Thanks for the opportunity to provide my input.
Sincerely,
DH

14. Hi Kahl,
I hear there's a possibility for more pickleball courts. My vote is for changing 2 tennis courts into 6 pickleball courts.
Thanks for looking for input on the expansion!
CD

15. This is RW, and I support converting the 2 tennis courts into 6 new pickleball courts.

Thank you for considering this change at the park.

RW

16. Hello

My husband J and I recently retired and decided to choose Pickleball as an activity that we could learn how to play together, as it required little up front knowledge or expense.

We are now hooked! It is such good exercise. We play mostly indoor during the summer heat, but also love the outdoor game.

We have found both the regional and Mv courts often to be very busy. We both feel that adding courts is a great idea. The times that I have played outdoor I have not noticed tennis courts rarely being fully occupied.

It will be very helpful to have more courts so that novices like us will be able to play and even sometimes just practice skills, with similar leveled players. Sometimes it is awkward to try to get on a court unless we come with a group.

Thank you for thinking of us seniors and our gaming ways!

MA

17. Hello,

We are in favor of converting 2 tennis courts into 6 pickle ball courts.

Thank you,
RW and CW

18. Hello,

I am an avid pickle ball player and use both the Meadow Vista courts and the courts at Recreation and Dry Creek. We are frequently overflowing with players and often need to wait long periods for court availability. It appears that the tennis courts are much more sparsely used. As a compromise, and not to take away their ability to play tennis, it seems a good choice to make the courts dual purpose. That would give everyone a chance to use them as needed.

Thanks for hearing our concerns.

Regards,

SJ

19. Kahl,

I am writing to submit a formal comment regarding converting tennis courts to pickleball courts at the Meadow Vista and Regional parks.

A public park district should have at least some tennis courts but the local need in our district is more pickleball courts. I currently play with the ARD indoor program at the gym off Racetrack. We regularly have three courts going (12 people) and 2-6 people sit out waiting for next game. This goes on for three hours with some people coming late and others leaving early but there are always lots of people having fun and we pay a small session wrist ban fee for the privilege.

On occasion I also play at the Regional Park on Sunday evenings. The pickleball courts always have various unrelated groups of families or friends playing together using one or two courts for their group with other groups on the remaining courts, the tennis court is empty.

I request that the board pursue all options to add additional pickleball courts in our District.

Sincerely,
RE

20. Good afternoon Mr. Muscott,

My husband and I live in the Deer Ridge Community and play pickle ball. We love the pickle ball courts at Regional Park. Pickle Ball had become such a popular sport. Many times, we have waited or we have seen people waiting for a pickle ball court.

With that said, we would like to request one of the tennis courts be completely converted/reconstructed into a pickle ball court. The tennis courts are not being used and appear to be sitting empty.

Please take my email under consideration. Thank you in advance for your understanding, assistance, and cooperation with this matter.

Respectfully Submitted,

KR and CR

21. We have recently started playing pickleball this summer and usually the courts are very busy. It would be great to have more to play on and would support converting the tennis courts to pickleball.

Many thanks
CR

22. Dear Kahl,

I'm glad the sport of pickleball has increased in popularity so much that new courts are being proposed for the community. Demand continues to grow for pickleball, and new courts would get considerable use by Auburn residents.

I definitely favor permanently converting the underused tennis courts at Regional and Meadow Vista Parks to permanent, single-use PB courts. The primary reason is rising demand for PB, and what seems like decreasing demand for tennis. If there's reduced community demand for tennis courts, or even just much less demand for tennis compared to PB, it makes sense to convert that valuable real estate to maximize the number of players

who can use that space. One tennis court that can serve 4 players can be converted to 4 (tightly packed) PB courts that holds 16 players — a much better bang for the buck.

I am against dual use outdoor courts. I believe the tennis players will hate the double set of lines, but the bigger issue for me is the net situation: how and who can access them to set up play? How will they be stored? Who will set them up? Lockers can be broken into. Nets can be stolen. Will the indoor PB players' fees fund the replacement of outdoor nets? Also, temporary nets won't last as long in the sun, and they take some care in setting up properly so the mid-point joint of the horizontal crossing bar (the weakest part of the temporary net system) is supported by the mid-post. I much prefer single-use, permanent PB courts with permanent, weather resistant nets.

Thank you for giving Auburn residents the opportunity to comment on ARD's proposal.

Sincerely,

CD

23. Dear ARD,

I strongly support increasing the ARD outdoor pickleball facilities by converting the old tennis courts at Regional park to pickleball courts. These tennis courts are rarely if ever used and they would be highly used by pickleballers. This would be a significant recreational addition for the "fastest growing sport in America".

At Meadow Vista, I think the dual use option is best.

D

24. I support the addition of new pickleball courts whenever possible. I also think converting the tennis courts to multi use courts would help to ease the log-jam of players at Regional Park and Meadow Vista Park. Thank you for making Auburn a pickleball friendly town. It's a good opportunity. If you need help, get big Jim Gray out there - (don't tell him I said that).

DG

Auburn

25. Dear Board Members—

Thank you so much for seeking out ideas and input as how best to serve the community of Auburn in regards to recreation facilities.

As you all know, there is a huge demand for more opportunities to play pickle ball—a very fast growing sport everywhere and in Auburn, the demand is from younger and younger demographics. Families and groups of friends play—of all ages.

The benefits of having pickleball courts vs tennis courts is that many more citizens can access the sport at one time. I'm sure that the sporting goods stores would tell you that sales for pickle ball paddles surpasses the sales for tennis racquets. It's a wonderful sport that can include so many of Auburn's community.

Thank you for all of your efforts and for encouraging healthy activities for everyone in the community of Auburn.

Gratefully
JS

26. Hi,

My husband and I play PB regularly at Regional Park and very much endorse converting the tennis courts into additional permanent pickleball courts. The courts are getting busier by the week!

Thank you,
EW and FW

27. Hello,

The courts at Rec Park need to be changed permanently. At least one of them. I hardly see anyone playing. I see them used for soccer practice, dog obedience, scootering and everything but Tennis!!

The court at Meadow Vista are used somewhat but not as much the Pickleball courts. We often have 4-7 people waiting to play.

Pickleball is The Fastest Growing Sport and Not just for the "old" folks! Think of the future.

Thanks
N

28. I am in favor of converting the older tennis courts at Regional Park to pickleball courts and of making the tennis court in Meadow Vista Park lined for multi-use.

JS

29. I would like to see the existing tennis court(s) converted to permanent pickleball courts.

Thanks,
GH

30. Hello,

I saw the recently posted sign on the courts this past Saturday morning.

We had all 6 courts going with 7 plus paddles in the waiting.

That being said, I vote to have the existing tennis courts converted to permanent courts to add to the already much-used six we have in place.

Thanks for your consideration!

VG

31. Hi, Kahl,

I am a pickleball enthusiast. In Meadow Vista there have often been all 4 courts in use, with 4-8 players waiting. We would love to have more pickleball courts in Meadow Vista.

Thank you, M

32. As you well know, we are in dire need of more Pickleball courts. We need to keep Auburn young, healthy and happy.

I already donated \$200 to put in the shade cover at Regional. If we need to pass the hat around again, I'll be happy to contribute.

Many thanks. JC

33. We would be very much in favor of making the older tennis courts at Regional park and meadow vista park permanent pickle ball courts. We have played at both locations. Very rare to see the tennis courts being used but the pickle ball courts are almost always full. Pickle Ball is defiantly the sport of choice for most.

Thank you

JR

34. Dear Mr. Muscott,

This email is a request that Auburn Recreation District expand the number of its outdoor pickleball courts beyond the current 6 at Regional Park. We have a group that comes to Regional Park to play, often more than once or twice per week. The courts are typically crowded with groups waiting to play. We have had discussions regarding options among ourselves and with several of the other Regional Park regulars.

The persons I have talked to would unanimously support the idea of converting one or more of the tennis courts at Regional Park to permanent pickleball courts.

We understand that more courts in Meadow Vista would also take pressure off Regional Park. Perhaps temporary painted lines on a tennis court would suffice for now.

We believe the surge of popularity of pickleball will continue. The game is easily learned and played by all ages and skill levels.

We will appreciate ARD's efforts to ensure there are no bottlenecks preventing those who love the game from enjoying the healthy, friendly outdoor activity.

Thank you very much for your consideration. JZ

35. Dear Kahl Muscott,

I vote for making the older tennis courts into permanent courts at regional park. I would also vote to convert the tennis courts at Meadow Vista into permanent Pickleball courts.

Thanks,

JL

36. Hello Kahl,

It is my understanding that auburn rec is looking for feedback on options for Pickleball courts. Let this email notes my vote for option #2 which is to convert the two tennis courts into permanent Pickleball courts. I cannot recall anytime when I have seen those 2 existing tennis courts in use. The current PB court are bursting in demand and added courts would be welcome relief and future growth minded.

Thanks for listening

RU

37. I was an avid tennis player for 20+ years. Since I've discovered Pickleball I no longer play tennis, but even when I did play tennis and I played at the Auburn courts, I never had trouble getting a court. Seeing how busy the pickle ball courts are relative to the tennis courts, I wholeheartedly believe that changing the two old tennis courts to pickleball courts is a capital idea.

Thank You, LB

38. Dear Kahl,

I'm writing in favor of building additional Pickleball Courts at Auburn Regional. I play Pickleball at Regional three days a week ; the Pickleball courts are always full and the tennis courts are nearly empty.

Pickleball is very popular amongst the Auburn retirement community and now they are teaching it at the high schools so there is an influx of young people.

A site visit by one of your staff members will help in making this decision.

Thank you.

WW

39. I've been playing Pb for nearly 8 years in Auburn. It's sustained popularity back then was questionable. With a track record now of exploding growth, it makes sense for a forward thinking rec district to add more courts for the huge influx of new players. It also adds to a desirable and progressive Auburn.

MN

40. Good morning! I was so excited to see your sign on the PB court. Im new to the sport & am finding it hard at times to find a court to play on. The regular PB players, who are at a more competitive level, have regularly scheduled court times which makes it difficult for the newer players to play on the court.

It would be great if additional PB courts we're made available in both regional & meadow vista.

Thank you for the opportunity to comment on this.

TA

41. Hi Kahl,

Regarding your pickle ball feedback request. I do think we need more pickle ball courts at both regional and meadow vista but I'd at least leave some tennis ball court(s) at both locations. Maybe take the red courts at regional and make them permanent pickle ball since there are other tennis courts. Then make meadow vista multi-use to leave some tennis options. We mainly play at night and it's rare to not also have someone playing tennis as well. Pickle ball is definitely the more popular sport so much more need for courts!

So glad you're looking at it!

Thanks, KM

42. Please convert at least one, preferably two tennis courts at Regional to permanent PB courts. Today there are 15 people waiting.

No name (phone # only)

43. Responding to your request for input at Regional and Meadow Vista Parks.

As a pickleball player at both places, I of course would like to see more pickleball courts. I play primarily in Meadow Vista, but do use Regional Courts, mainly on open play mornings Saturdays, but also on some Tuesdays and Thursdays. Most mornings, I can see people playing Tennis at Meadow Vista almost every morning, but have never seen anyone playing tennis at Regional, but other pickleball players who do their group play on Monday, Wednesday, and Friday, advise me that the Tennis courts at Regional are used a lot on those days. And While I would like them converted to pickleball courts, that would not be fair to those interested in tennis, so if the only option is to add Pickleball lines to the tennis courts, that would be my choice, if there were nets available to use, (but seeing the recent vandalism at Meadow Vista, I am not sure where you would put nets that were easily accessible for those times when the regular pickleball courts are fully in use, (one does not want to walk up and try to find an employee, and wait for him or her to bring the net)

That being said, I would still like to see some more Pickleball courts at both places but would like to see some sort of separator for court to court, (to keep balls from going into another court and interfering with that play.)

I would also like to see the lights finally set up at the Meadow Vista courts, they were built with the bases there for them, but nothing else done, it is more important to have those lights at this time as it is still quite hot in early evening (as we are in a triple digit heat wave now)

as a side note, i know you guys paid a company to repaint the courts at both places, but they did a terrible job, the cracks were not filled in, just painted over, in M.V., the initial job caused people to slip and fall, that they came back and added sand to the paint, which did nothing but caused the courts to have sand all over them for a while. the cracks got worse instead of better and causes to ball to take a weird bounce if it lands on it especially court # 2, tennis court side. While i personally do not know how to do this, many people have told your employees and the painting crew that if they used a vulcanized rubber type of paint for the cracks, it would fill them not leave a line and then when court is painted, one would never know there were cracks there to start with, - now if players know about this, one would hope the people you pay to fix this would do this, not just paint over them and not even try to fill in the cracks

SK

44. Hello Kahl,

I would like to express my opinion regarding the proposed pickleball courts. I am in favor of converting the older red tennis courts at Regional park to permanent pickleball courts.

As someone who has been playing pickleball for over fifteen years, I can attest to the sports increasing popularity. Saturdays on the Regional courts usually mean waiting for a turn to play, while at the same time normally only one of the four tennis courts is being used. It appears to me that there are definitely more pickleball players than tennis players, which would justify more courts.

Having said that, I am concerned about ARD using resources to make new courts when you did such a poor job maintaining the existing courts earlier this year. The so-called crack repairs that were made to the courts were a complete failure and waste of time. The playing surface is also slick in some spots. The lights and the new nets are much appreciated though.

Finally, while I am grateful to have the portable toilet at the court, I am not a fan of it's current location. Since it was moved to the edge of the sidewalk there are times when the smell coming from the toilet is too overpowering to play on the adjacent courts. It also reduced the privacy factor and makes the cleaner's job more difficult.

Thank you for all you do,

KR

45. Good afternoon. I'm in favor of any of the proposed PB additional options. Thank you - M

46. The number of Pickleball players just keeps growing every year. I read recently in a Pickleball magazine(?) article that said Pickleball in the Sacramento area has the highest density (most players and courts per square mile) in the US! Hard to believe, but it is amazing how this sport just keeps growing by leaps and bounds.

I think we definitely need more courts here in the Auburn area. It seems like the most cost effective way (?) is to convert lesser used tennis courts into Pickleball courts like we did last time. (I don't know if there is a way to have courts that are marked for both sports somehow, but wouldn't the steel tennis posts pose a safety risk? I don't know.).

In summary, I strongly support more Pickleball courts! 😊

Thanks for your time,

AD

47. I'd like to see the Regional Park and Meadow Vista Park tennis courts converted to pickle ball courts. Our pickle ball court population is increasing and we need more courts. Meanwhile tennis players are waning.

I don't think a multi use courts are a good idea. They won't serve either group very well because of the confusion of the lines caused as well as the changing nets being difficult/impossible to manage.

Thank you for considering my comment,

CL

48. Hi, Mr. Muscott,

As a regular pickleball player at Regional Park, I frequently see all of the pickleball courts in use and 10 to 25 people waiting their turn during the times when people are not at work. At those same times I haven't seen the tennis courts in full use, much less anyone waiting to play. Tennis players and pickleball players should receive equal consideration. It is simply that the number of regular pickleball players per court appears to be much greater than the number of tennis players per tennis court.

Please modify two of the tennis courts to make more pickleball courts.

Thank you.

DP

49. I am in favor of converting the old all-most never used tennis courts at Regional Park to pickleball courts.

JC

50. Hi,

I would appreciate having more pickleball facilities. Especially since the number of people playing is increasing steadily. It would be great to have the tennis courts at Regional converted to pickleball courts.

Thank ,

NB

51. Hello Kahl

I'm writing regarding ARD pickleball courts.

First of all, last night we were playing at Regional park as it got dark we realized the lights were not working. We wasted a lot of quarters trying 🤔🤔 Another player called your maintenance number and an ARD employee arrived within 20 mins. Unfortunately, she couldn't fix the problem but I wanted to point out that she was swift and very willing to try whatever it could to get the lights to work. There were about 24 people waiting for her to fix it and lots of opinions and ideas to get them to work. Lol!!

The Pickleball community is so thankful for your hardworking employees always working to keep things running smoothly.

For someone that plays 2-3x per week for the last year or so I can tell you that this game is growing in our community. All ages. All kind of folks. We joke and say the pickleball courts are the only place in auburn (maybe even america) where you can congregate and politics or other world matters are not even brought up. Pickleball in auburn is connecting the young with the old... it's such and inclusive game and everyone just wants to play and close off what's happening off the court.

We'd love to see more courts available. I understand that your board will be making some decisions about Pickleball courts at ARD and I for one would like to see more. It's a wonderful way for the Community to gather and stay healthy. Not just healthy bodies but also healthy relationships because this is such an inclusive game.

The game is starting to get national recognition and was even televised recently. This is growing quickly and we'd love for auburn to stay ahead of the trend.

Thank you for your consideration and please tell the woman that popped over to help us last night thank you again!!

Be well,
BA

52. Hi there, I just wanted to send in my comments regarding the pickleball courts at Regional and Meadow Vista parks!

I absolutely love the idea of converting the extra tennis courts at both locations to multi-use courts.

I'd love people who play tennis to still have that available to them, but as a pickleball player the courts are often so full there are long wait times and disagreements even on how best to divide the courts and play time. I think converting the extra courts to multi-use would help with that overflow of players while still allowing for tennis players to enjoy ARD as well.

Thank you so much for your time,

MP

53. Hello,

After playing in the Auburn pickleball courts for about 3 years now, I noticed that most of the time there is nobody playing tennis and if there is, it is only one court and very seldom two. So, since this sport is growing so rapidly amongst people of all ages, my opinion would be to leave one tennis court and convert the extra ones into pickleball ones.

Thanks for taking our opinions into consideration.

RD

54. Hello Kahl,

We really appreciate the courts at Regional Park. We live in Deer Ridge and use the courts often. We've been here for two years and have seen the growth of players. We also see very few tennis players. There is regular group of tennis players that come out and used two courts about twice a week. As a former tennis player I can't believe I am asking for more pickleball courts! However, it is the game that is played "100 to 1" at this park, if not more than that!

Friday and Monday mornings are great examples of ALL courts in use! The sport is growing faster than anyone could have imagined.

I don't see many high schoolers practicing tennis which would be my only concern.

Please seriously consider converting two more courts dedicated to Pickleball.

Thanks for your consideration.

DC

55. I moved to Auburn when I was 70. I knew no one except my kids. I found pickle ball at Regional Park and everything changed.

Just in the past 5 years, PB has grown so much that now realtors are using pickle ball facilities in their advertising to attract clients of all ages.

I wouldn't consider moving to an area that did not have courts. Regional needs more courts. Tennis courts are used less not just in Auburn but everywhere.

Please consider this request. Thanks so much.

JS

56. I moved here to Auburn in 1976 and appreciate the diversity of activities available through ARD. Now in my 70's I have gravitated to pickleball because of its simplicity to learn and heartfelt laughter that comes with the game. Adding additional permanent courts at Regional A and Meadow Vista through the conversion of existing tennis facilities is needed for the growth of the game and has my vote.

I held off learning to play the pickleball because I needed an activity for my golden years, I actively play 6 days a week and love the new friends I make with the cat and mouse dink shots and chuckling banter

Thank you for your consideration in this matter

Respectfully Yours

RD and CD

57. Kahl,

I have been playing Pickleball for the last four years. I have noticed at Regional that there are always open tennis courts but the Pickle Ball courts can fill up on weekends and when the weather is nice in the evenings. I don't like the idea of multipurpose courts and think that they are a bad idea. I am a member of the Raquetclub and they are attempting this setup and it is lame. Since Meadow Vista only has one tennis court and I do see people using that one, I think the best solution would be to convert the old tennis court at Regional into permanent Pickleball courts. Thank you for considering this option.

Sincerely,
JA

58. I am hopeful that ARD is considering on going through with additional pickle ball courts at Regional. Additional courts are absolutely needed in my opinion. Thank you for your consideration.

AL

59. I vote to convert tennis court to pickleball courts.

KW

60. I support the conversion of existing tennis courts into pickleball courts that are managed by ARD. I would support the effort by helping to create and manage volunteer projects to help with light maintenance and event planning.

Thank You

B

61. To: Kahl Muscott @ ARD

RE: Proposed changes to Regional and Meadow Vista Parks.

The game of pickleball is growing at an alarming fast rate. More families, young and old are playing. We have been playing at the Regional courts for several years and have noticed the increased play for pickleball and decreased play for tennis. Regional is known for and draws good pickleball players. It's in a good location with no noise issues.

We support the proposal converting the existing tennis courts into permanent pickleball courts to accommodate the increased number of players. Just ask your staff for their observation of tennis vs. pickleball players numbers or do your own study of court usage. Conversion of an existing playing surface is the most feasible way to accomplish the need for more pickleball courts.

Any consideration for facility expansion to include bathrooms, drinking fountains and shade cover would be appreciated.

Sincerely,

62. Kahl Muscott and ARD Board Members,

My husband and I regularly play Pickleball on the courts at Regional Park. The six courts are often filled to capacity especially on open court days: Tuesdays, Thursdays and Saturdays. On Tuesday evenings, the Ladie's Ladder players typically fill all six courts for several hours. The Auburn Pickleball community continues to grow. In the past 5 years that I and my husband have enjoyed playing at Regional Park, we have noticed an influx of younger players joining the more seasoned, older, players. Many are the sons and daughters of parents who play the game. It is so uplifting and encouraging to see extended family members and new players on the courts.

As an inexpensive, family friendly activity, Pickleball continues to gain popularity throughout the country. Because of the increasing interest in Pickleball and because the tennis court behind the PB courts is rarely used, I vote to transform that tennis court into six Pickleball Courts. I am certain the citizens of Auburn and beyond will find more opportunities to learn and play PB with additional space to do so.

Thank you and the Board for examining the possibility of expanding PB opportunities for the greater good of Auburn.

Sincerely,
VU

63. Dear K. Muscott,

I'm writing you in reference to the possible Pickelball court expansion and resurfacing of existing courts at Regional Park in Auburn. I have been an avid tennis player (playing three times a week) my entire life up until five years ago when I discovered Pickelball. Since drinking the kool-aid I now play Pickel Ball three to four times a week and love it! The amount of pickleball players today versus the amount of tennis players is staggering. It would be an excellent idea in my opinion to expand the pickle ball courts into two of the existing tennis courts. Regretfully Tennis is not what it used to be and it is somewhat of a dinosaur Worldwide. Pickelball however is not only the fastest growing sport in the country, it is actually the fastest growing sport in the history of all sports. I just read that in an article. My hope is that ARD will resurface (correctly this time) the current 6 courts and also make way for an expansion of 6 additional courts.

I play every Monday, Wednesday and Friday mornings, also on occasion Tuesday, Thursday and Saturday mornings, so I play a lot of pickleball. Usually on Tuesday, Thursday and Saturday (open play days) the courts are full and teeming with people, so an expansion would help alleviate the wait time to get back on a court. That would make play and getting on courts much easier and faster. More playing and less waiting around.

In closing, I would just like to cast my vote as a YES for the total resurfacing of the 6 existing Pickelball courts and YES for the expansion of 6 additional courts.

Kindest regards,

MA

64. I respectfully cast my vote as follows:

Convert older tennis court at regional to permanent pickle ball courts.

AND

Make tennis court at Meadow Vista multi use.

Thank you, JB

65. My vote is as follows:

For Regional, convert the older tennis courts to Pickleball courts.

For meadow Vista,

A. Resurface the existing Pickleball courts. Resurfacing done earlier this year was very poorly done by contractor! In the 1st and 2nd courts, when there is any moisture on these courts, players have fallen/slipped. In my case, I was very lucky it was not serious.

B. Also convert the existing tennis courts to multi-use. Note courts will need to be resurfaced due to numerous cracks (some over 1/2-1" wide)

Thank you for your support,

P

66. Yes, we do need more PB courts and with preferably with lights. Convert more unused tennis courts for PB courts.

Thank you,

RM and SM

67. Hi, I would like to voice my support to convert tennis courts to Pickleball courts. I started playing about 6 months ago at Regional Park, and play now most Mondays. The PB courts get very busy. I have seen reports on how this sport has grown, and predictions on continued growth - it sure would be nice to support residents who want to stay active and social in this way.

Thank you for listening,

LH

Mixed/Miscellaneous

1. I am all in favor of improving the courts at Regional. Can I also suggest adding another shade structure on the courts you have now. It can get very hot and it needs more shade.

MB

2. Hello Kahl,

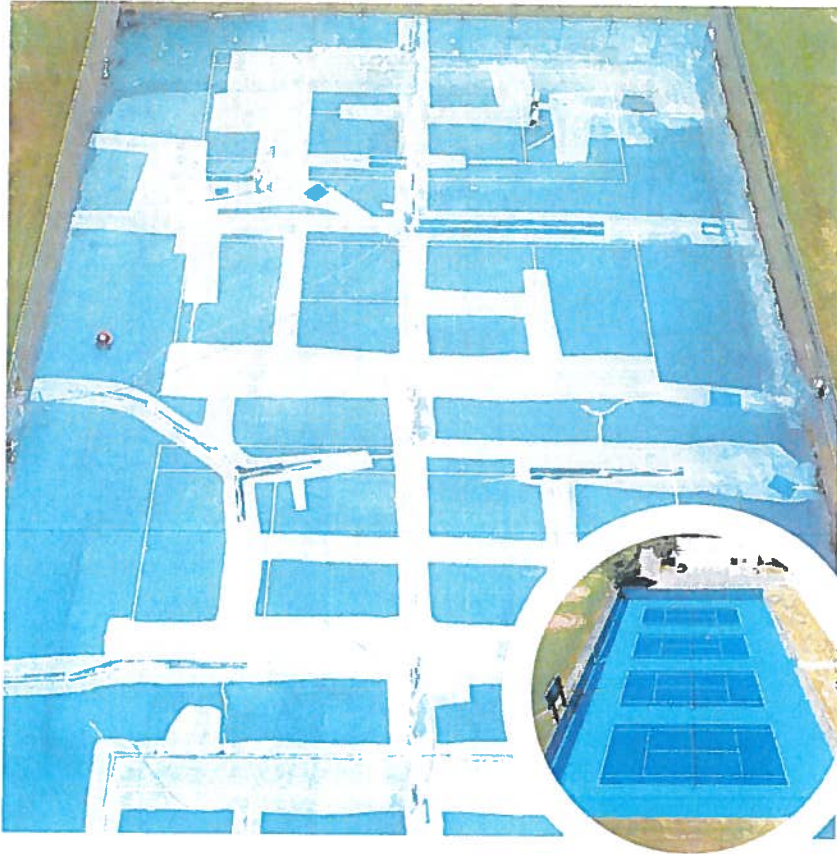
In regards to the proposed court changes I would like to see lights added to the blue courts if the tennis courts were to change to either pickleball or dual use courts. I play both sports and enjoy them both in different ways. I think this solution would allow for more players to enjoy pickleball which is the more popular choice currently while still allowing tennis players to not feel left out.

During the summer months play time is limited when the evenings are cooler if there are no lights and in the winter months due to the early sunsets. Especially during the summer the pickleball courts will be full and 1 to 2 groups will be playing tennis. If there is not a dedicated tennis court with lights it will be hard to find space on a multi use court without feeling rude in regards to time as the game times of tennis are much greater than those of pickleball.

N



A recent project used the Riteway Crack Repair system (below, left). The Armor Crack Repair System (at right) is a multi-layered flexible repair.



COURT REPAIR SYSTEMS

Cracking the Code

Hard courts will develop cracks, but systems on the market can extend the life of your courts.

BY MARY HELEN SPRECHER

► Hard courts are durable and easy to maintain. Unfortunately, though, cracks do occur, and if left untreated, they will only worsen.

Because asphalt is by nature a flexible pavement, it dries and becomes brittle over time, leading to cracking. It is a natural part of the aging process of the asphalt pavement, and that process is likely to be exacerbated in areas that have a pronounced freeze/thaw cycle.

Cracking in concrete courts is mostly structural in nature, which means the fissures extend through the vertical profile of the slab. Cracks in concrete courts are more common in reinforced concrete than in post-tensioned concrete. If a PT slab does crack, the tendons will tend to hold the cracks together.

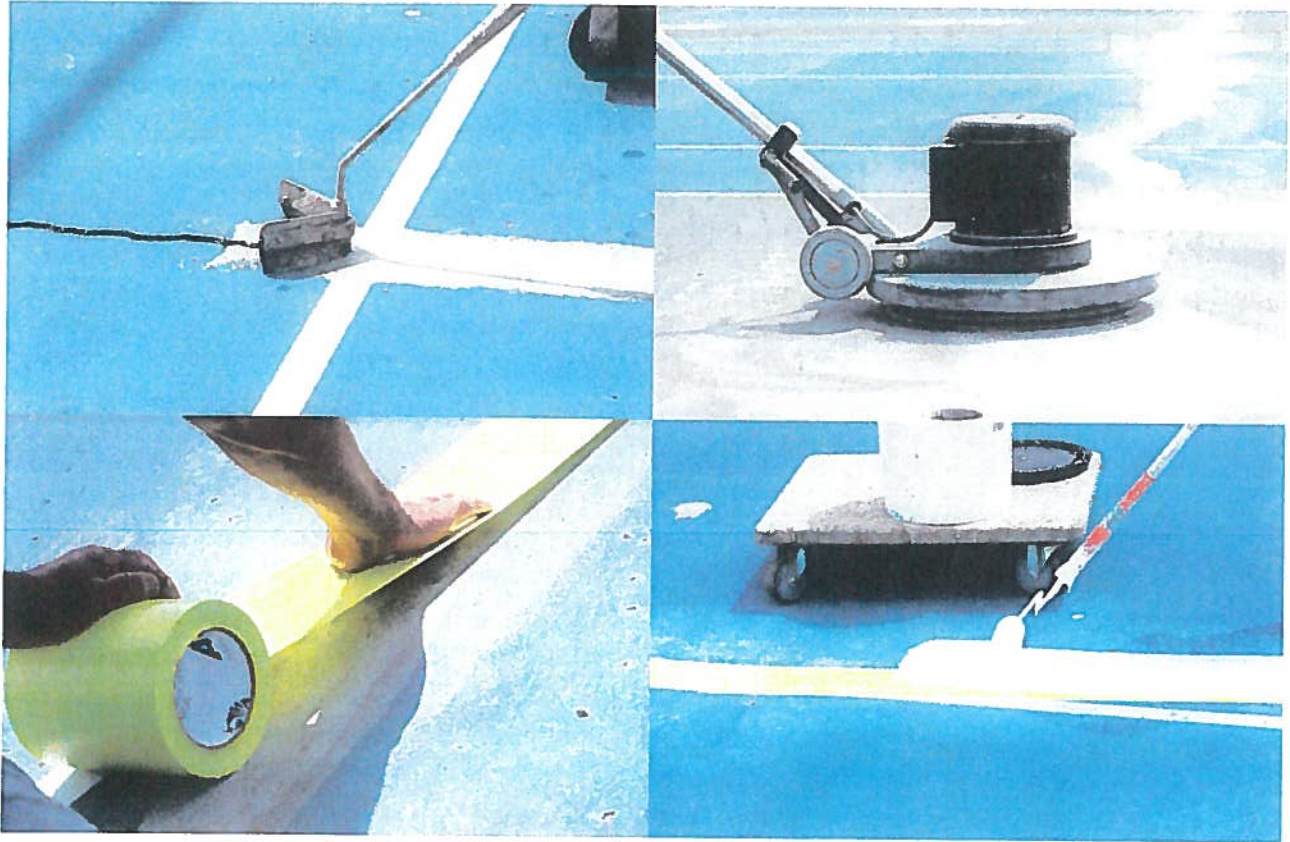
There are, however, crack repair systems on the market that can be applied to the problem areas of the court, resulting in a facility that looks better, plays truer and is safer for players. These systems are recommended for courts with minor to moderate structural cracks. Because they are proprietary, they are installed by contractors licensed by the specific crack repair companies.

Before jumping into any crack repair product or method, it is essential to note that there are many different types of cracks in tennis courts, and while some are relatively minor, others can indicate serious underlying problems that require more extensive remedies, up to and including reconstruction. A facility owner may not be adept at identifying the different types of cracks, so it is essential to consult with an experienced tennis court contractor.

Information about types of cracking and causes can be found in *Tennis Courts: Construction & Maintenance Manual*, available from the ASBA at sportsbuilders.org. The manual includes photos of court problems, including various cracks, their probable causes and recommendations for addressing them. It also contains timelines for maintenance to keep

“

There are many different types of cracks in tennis courts. While some are relatively minor, others can indicate serious underlying problems that require more extensive remedies, up to and including reconstruction.



PHOTOS COURTESY RITEWAY CRACK REPAIR, ARMOR CRACK REPAIR SYSTEM

courts in the best shape possible.

All company representatives mentioned below have noted that no product or system can stop a new crack from forming elsewhere on the court; it can only address existing cracks. “The crack is still going to be there,” says Tom Hinding of Riteway Crack Repair. “What you’re doing is extending the playable life of the court.”

Your choice of repair method should be predicated on the type and extent of cracking your court has (and the causes of those cracks), your budget and other factors. Check references and do all the necessary research, then select a method that fits your needs.

Armor Crack Repair System

On the market since: 2000

What it works on: Structural cracks

What it doesn’t work on: Spider cracking or hairline cracking

Description: The Armor Crack Repair System is a multi-layered flexible repair that goes over a crack without covering the entire court.

How it works: The system employs a slipsheet that goes over the filled crack. Two layers of Armor’s crack repair fabric follow, and then both sides are secured down with a yellow mesh reinforcement fabric. Once the system has been put into place, the tennis court can be resurfaced. According to the company, the process renders cracks invisible and undetectable to players.

They said it: “Just like the acrylics used to paint tennis courts haven’t changed in 50 years, neither has Armor since

it was introduced 22 years ago,” says Ellen Brattlof, sales and marketing.

Note: Know in advance the amount of cracking in lineal feet. According to Armor’s personnel, if a court has more than 500 lineal feet of cracking, the owner should discuss whether it is more cost-effective to reconstruct the court.

Pickleball court considerations: Armor says this system is not recommended for cracks on pickleball courts that are located within the playing area. The pickleball ball, because it is significantly lighter than a tennis ball, is susceptible to irregular bounces when landing directly on the area where a repair has taken place.

Information: armorcrackrepair.com



With the Riteway Crack Repair system (below), the crack is cleaned and filled, then a patented micro-sealant tape is applied over the area.

Riteway Crack Repair

On the market since: 2006

What it works on: Multiple types of cracks, including structural

What it doesn't work on: Spider cracks

Description: Riteway Crack Repair is a flexible system that relies on a multi-layered technology to cover the crack prior to recoating.

How it works: Contractors clean and fill the crack, then apply the patented micro-sealant tape with an adhesive that does not harden or dry. This is followed by a stress mat, then the edges are bonded to the court. Finally, the edges are buffed smooth, and a layer of color coating is put on top. Once the completed system is applied, players won't sense any difference in the finished surface.

They said it: "You'll never stop the crack from being there," says Tom Hinding. "But this system actually moves with the crack. It also stops water from coming up or going down. It used to be that year after year, the court owner would fill in the crack and it would reopen. We have basically stopped that from happening."

Note: Riteway is popular for school and park installations where significant surface repair is needed, but has not been included in the budget. Use of the product allows courts to remain safe and playable longer, while costing 50 percent to 70 percent less than reconstruction. The cost of the system, Hinding notes, will vary regionally, and depends on the lineal feet of cracking. He says the threshold at which an owner should consider court reconstruction rather than crack repair is 500 lineal feet of cracking on one court. Riteway Crack Repair comes with a two-year manufacturer's warranty.



Pickleball court considerations: Hinding notes that this system "is great for pickleball courts," without creating dead spots, hollow sounds or irregular bounces. It also resists bubbling and will be unnoticeable to players.

Information: ritewaytennis.com

TitanTrax Shield

On the market since: 2010

Description: According to company vice president David Burke, TitanTrax Shield is a dimensionally stable membrane crack repair system applied over either the entire court or just to the affected section, to mask cracking in the underlying surface. The product covers the existing pavement and conforms to it, giving the court a new look and feel. It may be installed at the time of new construction as well.

How it works: Once a crack has been filled, the TitanTrax Shield membrane, which is approximately 1/8-inch thick, is laid in place and anchored at the edges so that it "floats" over the surface. Acrylic surfacing can then be applied on top of it.

Note: The TitanTrax Shield product has evolved. There are now multiple products tailored to specific installations: the original TitanTrax Shield system, TitanTrax Air (a multi-sport surface with platform cushioning), TitanTrax Xtreme (a stable membrane system with a urethane cushion) and TitanTrax PK (designed for pickleball court repairs). TitanTrax also manufactures repair products for running tracks and shuffleboard courts, as well as basketball courts and other sports.

They said it: While a court owner needs to look at the lineal footage of cracking in the court in order to determine the cost-efficiency of repair, Burke says, "Planarity is a huge issue, too. If you have courts where there are large deviations in height, that is a limiting factor on how well the repair will work. You need to make sure you assess planarity before you do anything."

Pickleball court considerations: The TitanTrax PK product is specifically made to address the needs of pickleball facilities.

Information: ngisports.com

4.3 Cover sheet – Amending 2022/2023 Project List and CIP

Auburn Area Recreation and Park District Acquisition and Development Committee September, 2022

The Issue

Shall the Auburn Recreation District amend the existing 2022/2023 Project List and Capital Improvement Project List (CIP) to coincide with the FY 22/23 Budget Revision?

Background

The ARD Board of Directors approved the 2022/2023 Project List and CIP in March, 2022, and amended those documents in June, 2022.

As staff prepared the budget revision for FY 2022/2023, a proposed revision was also made to the 2022/2023 Project List and Five-Year CIP.

A list of those proposed revisions, as well as a spread sheet showing those revisions, is attached. All changes from the previously approved Project List and CIP are noted with corresponding highlights. The main changes to the FY 22/23 Project List are as follows:

- Adding funding for new security cameras at Overlook Park as the existing ones have permanently failed.
- Breaking out the plumbing infrastructure repairs to the appropriate parks. Previously, this work was listed under “Various Parks”. Work on the Regional Park plumbing infrastructure was pushed to the following year (23/24).
- Moved the following projects back one year (to FY23/24). These projects were pushed back due to timing and required resources:
 - Rec shop floor repairs
 - Regional Park kiosks/signage
 - Plumbing infrastructure upgrades
 - Ashford Park levee repairs and paving (some minor work has been completed)
 - Railhead Park parking lot repair/reseal
- The remainder of the changes were updates on the costs or moving the funding from one source to another

The main changes to the FY 23/24 Project List (next year’s project list) are as follows:

- Moved projects from FY 22/23 as noted
- Added installing emergency exit gates at Sierra Pool
- Added installing a concrete “mow strip” around the PH Pool fence (per Placer County Health)
- Added installing a shade shelter at the Regional Park south-end picnic tables

District Policy, Section H states:

3. Project List: The yearly Project List may include all funded items from that Fiscal Year’s Capital Improvement Plan plus all planned General Fund projects costing an estimated \$5,000 or more. The Project List may be amended throughout the year if a project is identified after the creation and approval of the list. The Project List should be presented to the Board for approval by May of each Fiscal Year.

Recommendation for A&D Committee

Review and send a recommendation to the Board to direct staff to continue to or begin preliminary work and provide appropriate environmental analysis of the projects on the proposed FY 22/23 Project List, and approve the Five-Year Plan Update.

Alternatives Available

1. Bring this item back to a subsequent A&D Committee meeting.

Fiscal Impact

The estimated costs and proposed funding for each project are included on the project list.

Attachments

FY 2022/2023 Project List and CIP - PROPOSED

FY 2022/2023 Project List and CIP - EXISTING

Auburn Recreation District Five Year Project List

Project List

2022/2023

Estimated balance

PROJECT	Est. Cost	Spent from General Funds or Grants in Prior Year(s)	Gen. Fund	ADA	Reserve	Cnty. Mit.	City Mit.	Grants	COVID Relief Funds
30,032 789,369 558,375 236,495 183,637 314,974									
Recreation Park									
Driveway valve box repair	2,500		2,500						
Wheehchair Swing	85,000				25,000	59,000	1,000		
Plumbing infrastructure repairs	15,000							15,000	In-Process
Rec Mod courtyard repairs	20,000			20,000					
Day Camp mod #1 roof repair	15,000							15,000	In-Process
James Field wiring	94,721	50,000	44,721		-60,000				Complete
Meadow Vista items									
Parking lot reseal; path repairs	53,409	26,414			26,995				Complete
New playground	96,732		36,732		-49,000	60,000			Complete
Plumbing infrastructure repairs	15,000							15,000	
Regional Park/Marriott Meadows									
Marriott Meadows construction docs & related work	182,637							182,637	In-Process
Pond leak investigation	40,000			40,000					
New partitions for restrooms	19,595		19,595		-20,000				In-process
Ashford Park									
Levee Repairs and paving	4,750			4,750					
Retaining wall investigation	10,000			10,000					In-Process
Overlook Park									
Interpretive Signage (2 x \$5K)	10,000			10,000					
Restroom ADA Upgrades	15,000		15,000						
New security cameras	10,000			10,000					25000 equipment reserve
Winchester Park									
Booster pump/filter replacement	25,000								
Christlan Valley Park									
Tutor Toller Roof	55,000			55,000					
Auburn Elementary									
Discovery Club mod roof repair	15,000							15,000	
Canyon View Community Center									
Lock and door repair	47,100							47,100	In process
Auburn Bike Park									
Various (fountain, signage, traffic control)	15,000			15,000					
Various Parks									
Electrical upgrades	34,000							34,000	In-Process
TOTAL	880,444	0	103,548	15,000	191,745	85,000	59,000	183,637	141,100
Estimated Balance Remaining			15,032	597,624	473,375	177,495	0	173,874	

Note: Assumes \$50,000/year in County Mitigation Fees
 Note: Assumes \$5000/year in ADA reserve funds
 Note: Assumes \$10,000/year in city mitigation
 Note: Assumes \$25,000 added to FCC per year
 Note: Funding for Marriott Meadows from State grant

Proposed

Auburn Recreation District Five Year Project List

Yellow = updated number or new project to list
Green = moved from a previous year

Project List

2023/2024

Estimated balance

PROJECT	Est. Cost	Spent from General Funds or Grants in Prior Year(s)	Gen. Fund	ADA	Reserve	Cnty. Mit.	City Mit.	Grants	Mt. Vernon sale proceeds	COVID Relief Funds	173,874
20,032 622,624 523,375 187,495 2,647,077 415,000											
Recreation Park											
Splash Pool repair	50,000		20,000		30,000					0	0
North (Front) Playground	120,000					120,000				0	0
North Playground, Path of Travel	30,000					30,000				0	0
Locker room Floor	25,000				25,000					0	0
Replace sewer line, back restroom	30,000									30,000	30,000
Sierra Pool deck expansion joint repair	15,000									15,000	15,000
Painting/mural maintenance shop building	3,000				3,000					0	0
Emergency exit gates at Sierra Pool	15,000									15,000	15,000
Rec Shop Floor Repairs	50,000				50,000					0	0
Meadow Vista items											
PH Pool fence mow strip	25,000				25,000					0	0
Regional Park											
Breezeway Painting	40,000		20,000		20,000					0	0
Tennis/pickleball courts surfaces	200,000				200,000					0	0
Marront Meadows Development	3,427,077					445,000		2,567,077	415,000	0	0
New vault toilet, Dry Creek end	45,000					22,000				23,000	23,000
Repave Park Dr.	30,000									30,000	30,000
Shade structures at south-end picnic tables	50,000									50,000	50,000
Kiosks/signage	10,000		10,000							0	0
Plumbing infrastructure upgrades	20,000									20,000	20,000
Ashford Park											
Levee Repairs and paving	4,750		4,750		70,250						
Railhead Park											
New pump and filter	50,000										
Parking lot repair/reseal	60,000				60,000						
Various Parks											
Drinking fountain replacement	35,000										
TOTAL	4,030,077	0	50,000	0	483,250	467,000	150,000	2,567,077	415,000	35,000	153,000
Estimated Balance Remaining				20,032	139,374	56,375	37,495	80,000	0	0	20,874

50,000 equipment reserve

Note: Assumes \$50,000/year in County Mitigation Fees
 Note: Assumes \$5000/year in ADA reserve funds
 Note: Assumes \$10,000/year in city mitigation
 Note: Assumes \$25,000 added to FCC per year
 Note: Placer County to use approx. \$350,000

Proposed

Auburn Recreation District Five Year Project List

Yellow = updated number or new project to list

2024/2025

Estimated balance

PROJECT	Est. Cost	Spent from General Funds or Grants in Prior Year(s)	Gen. Fund	ADA	Reserve	Cnty. Mit.	City Mit.	Grants	In Kind
25,032 164,374 106,375 47,495 80,000									
<i>Pend-island renovation</i>									
<i>Meadow Vista Park</i>									
<i>Regional Park</i>									
Tennis Court Path of Travel	41,500		3,000	18,500		20,000			
Dry Creek playground replace/ADA path of travel	125,000				40,000	85,000			
<i>Pend-mucking</i>									
Canal Repair	40,000				40,000				
<i>PB court crack repair</i>									
TOTAL	206,500	0	3,000	18,500	80,000	105,000	0	0	0
Estimated Balance Remaining				6,532	84,374	1,375	47,495	80,000	0

Postponed
100,000

100,000

- Note: Assumes \$50,000/year in County Mitigation Fees
- Note: Assumes \$5000/year in ADA reserve funds
- Note: Assumes \$10,000/year in city mitigation
- Note: Assumes \$25,000 added to FCC per year
- Note: Assumes \$50,000/year in Equipment Reserve funds

Proposed

Auburn Recreation District Five Year Project List

Project List

Yellow = updated number or new project to list

2022/2023

Estimated balance

PROJECT	Est. Cost	Spent from General Funds or Grants in Prior Year(s)	Gen. Fund	ADA	Reserve	Cnty. Mit.	City Mit.	Grants	COVID Relief Funds
30,032 789,369 556,375 236,495 183,637 314,974									
Recreation Park									
Driveway valve box repair	2,500		2,500						
Wheelchair Swing	85,000					25,000	59,000	1,000	
Rec Shop Floor Repairs	50,000				50,000				
Rec Mod courtyard repairs	20,000				20,000				
Day Camp mod #1 roof repair	15,000								
James Field wiring	100,000	40,000			60,000				15,000
Meadow Vista Items									
Parking lot reseal, path repairs	39,414	26,414			13,000				
New playground	100,000				40,000	60,000			
Regional Park/Marriott Meadows									
Marriott Meadows construction docs & related work	182,637							182,637	
Kiosks/signage	10,000	10,000							
Pond leak investigation	40,000				40,000				
New particlans for restrooms	20,000				20,000				
Ashford Park									
Leaves Repairs and paving	75,000				75,000				
Retaining wall investigation	10,000				10,000				
Overlook Park									
Interpretive Signage (2 x 55k)	10,000				10,000				
Restroom ADA Upgrades	15,000			15,000					
Railhead Park									
Parking lot repair/reseal	80,000				80,000				
Winchester Park									
Booster pump/filter replacement	25,000								
Christian Valley Park									
Tutor Totter Roof	55,000				55,000				
Auburn Elementary									
Discovery Club mod roof repair	15,000								15,000
Canyon View Community Center									
Lock and door repair	50,000								50,000
Auburn Bike Park									
Various (fountain, signage, traffic control)	15,000				15,000				
Various Parks									
Plumbing infrastructure upgrades	50,000								50,000
Electrical upgrades	34,000								34,000
TOTAL	1,078,551	0	12,500	15,000	468,000	85,000	59,000	183,637	164,000
Estimated Balance Remaining				15,032	321,369	473,375	177,495	0	150,974

25000 equipment reserve

Existing
Approved Time 2022

Note: Assumes \$50,000/year in County Mitigation Fees
 Note: Assumes \$5000/year in ADA reserve funds
 Note: Assumes \$10,000/year in city mitigation
 Note: Assumes \$25,000 added to FCC per year
 Note: Funding for Marriott Meadows from State grant
 *Note: Placer County to ure approx. \$350,000

Auburn Recreation District Five Year Project List

Yellow = updated number or new project to list

Project List

2023/2024

Estimated balance

PROJECT	Est. Cost	Spent from General Funds or Grants in Prior Year(s)	Gen. Fund	ADA	Reserve	Cnty. MIL	City MIL	Grants	MIL. Vernon sale proceeds	COVID Relief Funds
<i>Recreation Park</i>										
Splash Pool repair	50,000									0
North (Front) Playground	120,000		20,000		30,000					0
North Playground, Path of Travel	30,000					120,000				0
Locker room Floor	25,000					30,000				0
Replace sewer line, back restroom	30,000				25,000					0
Sierra Pool deck expansion joint repair	13,000									30,000
Painting/mural maintenance shop building	3,000									13,000
<i>Regional Park</i>										
Breezeway Painting	40,000				3,000					0
Tennis/pickleball courts surfaces	200,000		20,000		20,000					0
Marriott Meadows Development	3,427,077				200,000					0
New vault toilet, Dry Creek end	45,000					445,000		2,567,077	415,000	0
Repair Park Dr.	30,000					22,000				23,000
<i>Railhead Park</i>										
New pump and filter	50,000									30,000
<i>Various Parks</i>										
Drinking fountain replacement	35,000									
TOTAL	3,938,077	0	40,000	0	278,000	487,000	150,000	2,567,077	415,000	35,000
Estimated Balance Remaining				20,032	68,369	56,375	37,405	80,000	0	19,974

50,000 equipment reserve

- Note: Assumes \$50,000/year in County Mitigation Fees
- Note: Assumes \$50,000/year in ADA reserve funds
- Note: Assumes \$10,000/year in city mitigation
- Note: Assumes \$25,000 added to FCC per year
- Note: Placer County to use approx. \$350,000

Pool repair
mitigation
approved

Auburn Recreation District Five Year Project List

Yellow = updated number or new project to list

2024/2025

Estimated balance

PROJECT	Est. Cost	Spent from General Funds or Grants in Prior Year(s)	Gen. Fund	ADA	Reserve	Cnty. Mit.	City Mit.	Grants	In Kind	
Meadow Vista Park										
Pond-island-renewal										
Regional Park										
Tennis Court Path of Travel	41,500		3,000	18,500		20,000				
Dry Creek playground replace/ADA path of travel	125,000				40,000	85,000				100,000
Pond-muckling										
Canal Repair	40,000				40,000					100,000
PB court crack repair										
TOTAL	206,500	0	3,000	18,500	80,000	105,000	0	0	0	0
Estimated Balance Remaining			6,532	13,369	1,375	47,495	80,000			0

- Note: Assumes \$50,000/year in County Mitigation Fees
- Note: Assumes \$5000/year in ADA reserve funds
- Note: Assumes \$10,000/year in city mitigation
- Note: Assumes \$25,000 added to FCC per year
- Note: Assumes \$50,000/year in Equipment Reserve funds

*Expiring Time 2023
Approved*

DISCUSSION ITEMS:

1. 2021 – 2022 Project Activity Report
2. 75th Anniversary review proposed logos and review new archival information

2022/2023 PROJECT ACTIVITY REPORT		UPDATED 09/15/22	
PROJECT	EST. COST	NOTES	EST. COMPLETED
RECREATION PARK			
Driveway Asphalt Repair/Valve Box & Modular Bldgs. Courtyard Repair (2022)	22,500.00	Trees have just been removed and staff will strive to get three quotes to do the courtyard paving repair work before it gets too cold to do asphalt work.	Fall/Winter 2022
Wheelchair Swing Project (2018)	85,000.00	A small amount of WC swing work remains to be done including rubber surfacing and handrail installation. Contractor has promised that all work will be complete by 9/22.	Summer 2022
Rec Shop Floor Reinforcement Project (2020)	20,000.00	This project is being pushed out to next fiscal year. PBM Construction Inc. responded back to the District that the floor reinforcement joist work would be around \$40-\$45K. The bathroom door replacement component would be approximately \$10K. They did not price the sealing of the concrete floors in the restrooms. This project will need to be put on hold until the budget for this work can be revised.	TBD
Modular Bldg. #1 Roof Repair Project (2022)	15,000.00	Staff will seek fresh quotes for this work from contractors that place bids on the Christian Valley Tutor Totter roof project.	Fall 2022
MEADOW VISTA PARK			
Playground Replacement Project	100,000.00	The short asphalt path connection to the ADA wheelchair ramp to the new playground has been installed. Entire project now complete.	MAY 2022
Parking Lot Re-seal/Re-Stripe (combined with project below)	39,414.00	Baldoni came back out to the site and did a nice job providing some additional striping at no cost to the District. Entire project now complete.	JUNE 2022
Pickleball Court Crack Repairs	0.00	Staff getting quotes and information regarding more permanent repairs that could take place next fiscal year.	2023/2024
ASHFORD PARK			
Levee Repairs & Paving (2022)	75,000.00	This project will be pushed out to next fiscal year. The spillway vegetation and fencing/gate work have been completed. This will allow contractors access to the culvert and the ability to put together bids for the work.	Fall 2022
Retaining Wall Investigation	10,000.00	Staff will be obtaining quotes from engineers for this investigation.	Fall/Winter 2022

2022/2023 PROJECT ACTIVITY REPORT		UPDATED 09/15/22	
PROJECT	EST. COST	NOTES	EST. COMPLETED
OVERLOOK PARK			
Two Interpretive Signs (2022)	10,000.00	Signage program needs to be developed.	Winter 2022
Restroom ADA Upgrades (2019)	15,000.00	Project signage and fixture adjustments will be done in-house when staffing levels allow. ADA Parking lot re-striping needs to be re-done and restroom partitions are in need of replacement. Staff will obtain quotes for this work.	Winter 2022
REGIONAL PARK & MARRIOTT MEADOWS SITE			
Marriot Meadows CD's and Park Construction Project (2021/22)	182,637.00	Consultant is bringing the CD's to a 100% stage for final review by the District at the end of the month. Staff is awaiting response from the County regarding a much shorter and less expensive sanitary sewer connection request. Staff would like to have this resolved before starting the sewer annexation process. Shade canopy design, playground design/public voting process and splash pad design are some of the related things that staff is concurrently working on.	FALL 2023
Kiosks/Signage (2022)	10,000.00	This project is being pushed out to next fiscal year. Signage program needs to be developed.	Winter 2022
Pond Leak Investigation (2022)	40,000.00	Staff will be obtaining quotes from engineers on this work.	Fall 2022
Pickleball Court Crack Repairs	0.00	Staff getting quotes and information regarding more permanent repairs that could take place next fiscal year.	2023/2024
CVCC			
Bike Park - Construction (2015/2016) Fountain, signage, traffic control	15,000.00	Bike park drinking fountain has been installed. The Auburn Endurance Committee will be affixing a plaque to the fountain commemorating their donation at some point in the near future. That, or commissioning an artist to paint the fountain. Numerous small bike park signs remain to be installed and the bike park volunteers have agreed to perform this work being reimbursed by the District for materials.	ONGOING
ADA Door Improvements & Deadbolt/door closing upgrades building-wide (2022)	50,000.00	Project work has been completed, walk-through inspection to follow. New ADA access automatic door works nicely.	SPRING/SUMMER 2022

2022/2023 PROJECT ACTIVITY REPORT		UPDATED 09/15/22	
PROJECT	EST. COST	NOTES	EST. COMPLETED
RAILHEAD PARK			
Parking Lot Repair/Re-seal (2022)	60,000.00	This project will be pushed out to next fiscal year. Staff to obtain preliminary pricing from paving contractors for this work.	SPRING 2023
WINCHESTER PARK			
Booster Pump & Filter Replacement (2022)	25,000.00	Booster pump has been specified and staff needs to obtain a scope of work from a contractor for the entire project and then solicit three bids to do the work.	WINTER 2022
CHRISTIAN VALLEY PARK			
Tutor Totter Roof Repair (2022)	45,000.00	This project formal bid process has started with bids due on Thursday, October 20th. Current goal is to have the roof replaced early November, weather permitting.	FALL/WINTER 2022
AUBURN ELEMENTARY			
Discovery Club Modular Roof Repair (2022)	15,000.00	Staff will seek fresh quotes for this work from contractors that place bids on the Christian Valley Tutor Totter roof project.	Fall 2022
MULTI-PARK ITEMS			
Energy Efficient Upgrades (2021) Electrical and Plumbing scope additions	84,000.00	Exterior wall mount HVAC systems remain to be installed at one Rec Park modular and one Auburn Elementary School modular as well as a new heater at Regional Park Gym. These items as well as any work identified after electrical walk-through is all that is left in this energy efficiency project original scope. The damage repair estimate that was prepared for CVCC flood damage had to be revised to meet Ca. Prevailing Wage requirements. That revised estimate has been received and was forwarded to the USBOR for review. On 9/15 the USBOR gave approval to the District to sign the insurance release, start process for insurance company to cut damage repair check to the District and get the contractor started on the repair work.	ONGOING 2021/22
Fiscal Year Projects Total:			918,551.00

1a



1b



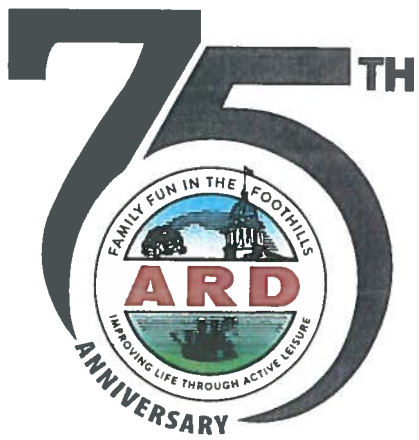
2a



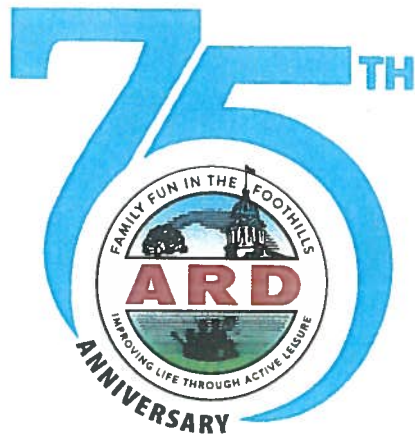
2b



3a



3b



3c

