

**Item 8.6 Cover sheet – California Special Districts Association (CSDA) Board of Directors Call for Nominations Seat C**

**The Issue:**

Shall the Auburn Area Recreation & Park District Board of Directors make a nomination for election to the CSDA Board of Directors?

**Recommendation:**

Board of Directors review information from CSDA, follow nomination procedures.

**Attachments**

Letter from CSDA  
Board of Directors Nomination form  
2015 Regions/Networks  
2015 CSDA Board Candidate Information Sheet



**California Special  
Districts Association**  
*Districts Stronger Together*

**DATE:** February 21, 2014  
**TO:** CSDA Voting Member Presidents and General Managers  
**FROM:** CSDA Elections and Bylaws Committee  
**SUBJECT: CSDA BOARD OF DIRECTORS CALL FOR NOMINATIONS  
SEAT C**

The Elections and Bylaws Committee is looking for Independent Special District Board Members or their General Managers who are interested in leading the direction of the California Special Districts Association for the 2015 - 2017 term.

The leadership of CSDA is elected from its six geographical regions. Each of the six regions has three seats on the Board with staggered 3-year terms. Candidates must be affiliated with an independent special district that is a CSDA regular member located within the geographic region that they seek to represent. (See attached Region Map)

The CSDA Board of Directors is the governing body responsible for all policy decisions related to CSDA's member services, legislative advocacy, education and resources. The Board of Directors is crucial to the operation of the Association and to the representation of the common interests of all California's special districts before the Legislature and the State Administration. Serving on the Board requires one's interest in the issues confronting special districts statewide.

**Commitment and Expectations:**

- Attend all Board meetings, held every other month at the CSDA office in Sacramento.
- Participate on at least one committee, meets 3-5 times a year at the CSDA office in Sacramento.  
CSDA reimburses Directors for their related expenses for Board and committee meetings as outlined in Board policy.
- Attend CSDA's two annual events: Special District Legislative Days (held in the spring) and the CSDA Annual Conference (held in the fall).
- **Complete all four modules of CSDA's Special District Leadership Academy within 2 years.**  
(CSDA does not reimburse for expenses for the two conferences or the Academy classes even if a Board or committee meeting is held in conjunction with the events).

**Nomination Procedures:** Any Regular Member is eligible to nominate one person, a board member or managerial employee (as defined by that district's Board of Directors), for election to the CSDA Board of Directors. **A copy of the member district's resolution or minute action and Candidate Information Sheet must accompany the nomination. The deadline for receiving nominations is May 23, 2014.** Nominations and supporting documentation may be mailed or faxed.

Nominees will receive a Candidate's Packet in the mail. The packet will include campaign guidelines.

CSDA will mail ballots on June 6<sup>th</sup>. The ballots must be received by CSDA no later than 5:00 p.m. August 1, 2014 and must be the original ballot (no faxes or e-mails). The successful candidates will be notified no later than August 5<sup>th</sup>. All selected Board Members will be introduced at the Annual Conference in Palm Springs, CA in September.

### **Expiring Terms**

(See enclosed map for regional breakdown)

<b>Region 1</b>	Seat C	Phil Schoefer, Western Shasta Resource Conservation District
<b>Region 2</b>	Seat C	David Pierson, Sacramento Metropolitan Fire District*
<b>Region 3</b>	Seat C	Stanley Caldwell, Mt. View Sanitary District*
<b>Region 4</b>	Seat C	Steve Perez, Rosamond Community Services District*
<b>Region 5</b>	Seat C	Jim Acosta, Saticoy Sanitary District
<b>Region 6</b>	Seat C	Elaine Sullivan, Leucadia Wastewater District*

(\* = Incumbent is running for re-election)

If you have any questions, please contact Charlotte Lowe at 877-924-CSDA or [charlottel@csda.net](mailto:charlottel@csda.net).



**California Special  
Districts Association**  
*Districts Stronger Together*

## BOARD OF DIRECTORS NOMINATION FORM

Name of Candidate: \_\_\_\_\_

District: \_\_\_\_\_

Mailing Address: \_\_\_\_\_  
\_\_\_\_\_

Region: \_\_\_\_\_ (see map on back)

Telephone: \_\_\_\_\_

(PLEASE BE SURE THE PHONE NUMBER IS ONE WHERE WE CAN REACH THE CANDIDATE)

Fax: \_\_\_\_\_

E-mail: \_\_\_\_\_

Nominated by (optional): \_\_\_\_\_

Return this **form and a Board resolution/minute action supporting the candidate and Candidate Information Sheet** by fax or mail to:

CSDA  
Attn: Charlotte Lowe  
1112 I Street, Suite 200  
Sacramento, CA 95814  
(877) 924-2732      (916) 442-7889 fax

***DEADLINE FOR RECEIVING NOMINATIONS – May 23, 2014***



# 2015 Regions/Networks





## 2015 CSDA BOARD CANDIDATE INFORMATION SHEET

The following information **MUST** accompany your nomination form and Resolution/minute order:

Name: \_\_\_\_\_

District/Company: \_\_\_\_\_

Title: \_\_\_\_\_

Elected/Appointed/Staff: \_\_\_\_\_

Length of Service with District: \_\_\_\_\_

1. Do you have current involvement with CSDA (such as committees, events, workshops, conferences, Governance Academy, etc.):

---

---

2. Have you ever been associated with any other state-wide associations (CSAC, ACWA, League, etc.):

---

---

3. List local government involvement (such as LAFCo, Association of Governments, etc.):

---

---

4. List civic organization involvement:

---

---

**\*\*Candidate Statement** – Although it is not required, each candidate is requested to submit a candidate statement of no more than 300 words in length. **Any statements received in the CSDA office after June 5, 2014 will not be included with the ballot mailing.**

**SECTION**

**9.0 ITEMS FOR DISCUSSION AND  
INFORMATIONAL ITEMS**

**DESCRIPTION:**

- 1. Commercial/retail leasing of ARD property (Director Holbrook requested this item).**
- 2. Bell Road Habitat Enhancement (Acquisition & Development Committee).**
- 3. Operation and Development Plan Public Outreach.**

## **Item 9.0 Cover sheet – Discussion item #1. Commercial/Retail Leasing on ARD Property**

**Auburn Area Recreation and Park District Board of Directors meeting March, 2014**

### **The Issue**

A discussion of the ability and desires of ARD to lease to commercial or retail businesses. Director Holbrook requested this item be discussed.

### **Background**

The following ARD owned/managed parks have restrictions that may limit the ability to lease the land to a commercial or retail business:

- Recreation Park
- Atwood Park
- Shockley property
- Christian Valley Park
- Railhead Park
- Overlook Park
- Canyon View Community Center and surrounding lands

ARD Ordinance #1 (Y) states the following:

Y. Concessions and profiteering. No person or commercial enterprise may use a park for financial gain unless authorized by Special Permit.

### **Recommendation**

Review and provide direction for staff.

### **Fiscal Impact**

Undetermined at this time.

### **Attachments**

None.



## **Item 9.0 Cover sheet – Discussion item #2. Bell Road Habitat Enhancement**

**Auburn Area Recreation and Park District Acquisition and Development Committee March, 2014;  
Board of Director's meeting March, 2014**

### **The Issue**

A discussion regarding a proposed natural system enhancement project for the Bell Rd. property.

### **Background**

The Stewardship Council's is a private, nonprofit foundation responsible for developing and implementing a land conservation plan for 140,000 + acres of land owned by PG&E. As part of this plan, PG&E made portions of the 140,000 acres available for fee title donation to organizations interested in preserving and enhancing the lands consistent with six Beneficial Public Values (BPV). Those six BPV are:

- Habitat protection
- Preservation of open space
- Outdoor public recreation
- Sustainable forestry
- Agricultural uses
- Cultural and historical resources

ARD applied for fee title donation for a +/- 42 acre parcel of land adjacent to and including Christian Valley Park ("CV site", attached Map 4) and for three parcels that combine to form a +/- 22 acre land area off of Bell Rd. and New Airport Rd. ("Bell Rd. site", attached Map 5). The Stewardship Council Board of Directors has approved ARD's application.

In January 2012, ARD was asked to sign a Letter of Intent to the Stewardship Council. This letter was approved by the ARD Board of Directors.

ARD has been working with staff from PG&E, the Stewardship Council and Placer Land Trust to come to an agreement on documents related to the transfer of land.

The ARD Board of Directors has approved staff with moving forward on the donation of the Christian Valley property. The procedures and paperwork review and approval are moving forward.

The ARD Board of Directors requested that staff continue to work with and negotiate the terms of the Conservation Easement for the Bell Rd. property. Those negotiations are moving forward.

Part of the discussions of Bell Rd. involve proposed habitat enhancements. These possible enhancements, to be paid for by the Stewardship Council, are detailed in the attached "Preliminary Proposal for a Natural System Enhancement Project for the Bell Road Property".

### **Recommendation**

Review the Preliminary Proposal and provide feedback. As described, the first step is a Site Assessment/Needs Analysis. Staff is hoping for approval from the Stewardship Council Board at the end of March, allowing this assessment to move forward soon after.

**Fiscal Impact**

With the exception of ARD staff time, all costs related to this proposal would be paid for by the Stewardship Council.

**Attachments**

Preliminary Proposal for a Natural System Enhancement Project for the Bell Road Property.

PRELIMINARY PROPOSAL FOR A NATURAL SYSTEM ENHANCEMENT  
PROJECT FOR THE BELL ROAD PROPERTY

AUBURN AREA RECREATION AND PARK DISTRICT  
March 7, 2014

The Auburn Area and Recreation Park District (ARD) is currently in process to receive, through fee title transfer from PGE, approximately 22 acres of land located at the intersection of Bell Road and New Airport Way in Auburn, CA. The property is part of the Yuba-Bear River Watershed in the Lower Drum Planning Unit found on Map 5, including parcels 893, 894 and 895. The site is undeveloped with the exception of PGE tower lines that bisect the site. It appears there has been some incidental use of the site in the past as evidenced by old horse corrals and livestock fencing at the westerly edge adjacent to existing residential development. The site is predominantly an oak woodland habitat with a wetland running north-south through the site. A wetland delineation has been completed which defines two types of wetlands: riverine forested and riverine scrub-shrub. Total wetlands on the site are 7.24 acres in size. The combination of the oak woodland and wetlands provides an excellent opportunity to conduct a habitat enhancement project on the site. Please refer to the attached aerial exhibit showing the site context and location of wetlands/oak woodlands.

ARD wishes to develop a portion of the site into an active/passive recreational park which would serve the greater north Auburn community. ARD is currently working with PGE, the Stewardship Council and Placer Land Trust to develop the Conservation Easement that would run in perpetuity with the land. Implementing a habitat enhancement project on the site would provide an opportunity to promote the BPV's, particularly the protection of natural habitats for wildlife and plants. The Stewardship Council has indicated to ARD that grant funding for such a project is available. ARD is greatly interested in pursuing this opportunity and believes a habitat enhancement project on the site could include one or more of the following elements:

- Removal of invasive and/or non-native species in the oak woodlands and/or wetlands;
- Stream bank enhancement/stabilization and erosion control;
- Promote natural oak woodland regeneration;
- Enhancement of wetlands to improve water quality and lessen downstream sedimentation impacts;
- Fuels reduction and vegetative management work to remove ladder fuels which may cause unnecessary risk to the BPV's.
- Programs to involve youth through the creation, implementation and monitoring of the enhancement project.

**Multiple Step Process:**

Step One: Site Assessment/Needs Analysis

ARD envisions a completed enhancement project to be a multiple step process. To understand the most appropriate habitat enhancement project for the site, implementation of an enhancement project will require identifying the nature and scope of work all parties agree is most suitable and results in the maximized reward for the investment. The site assessment/needs analysis is the first step toward identifying opportunities to promote habitat values, which could be included in an Enhancement Proposal to be submitted and considered by the Stewardship Council. We envision beginning by using the assistance of a qualified professional consultant team and Placer Land Trust to complete:

- A site assessment/needs analysis to determine appropriate habitat enhancements to the site and develop a specific project scope of work. This will facilitate ARD, PLT and the Stewardship Council in identifying an appropriate project, determine the most cost effective implementation scenario and associated costs.

- ARD anticipates this first step to cost \$14,140.00 for the site assessment/needs analysis. Please refer to the attached proposal from Dudek consultants to conduct the Site Assessment/Needs Analysis to support a habitat enhancement project on the site.

#### Step Two: Preparation of an Enhancement Proposal:

The data gathered from the Site Assessment/Needs Analysis will be the foundation for creating an Enhancement Proposal that identifies the goals, objectives, scope of work and associated costs of a habitat enhancement project to be implemented on the site along with other potential active/passive recreational enhancements. The Enhancement Proposal would meet the Enhancement Program Proposal Guidelines published by the Stewardship Council dated January 2014. The Enhancement Proposal would include a scope of work and costs to create a Habitat Enhancement Plan which serves as the blueprint for implementing a project on the site.

#### Step Three: Preparation of Habitat Enhancement Plan

A qualified consultant team can develop an Enhancement Plan that can be cost estimated and implemented through a combination of contracted and volunteer efforts. ARD would engage a professional consultant team to complete the following:

- Habitat Enhancement Plan and any necessary construction documents and engineer's estimates;

Costs for the above service are dependent upon the scope of project identified during the site assessment/needs analysis. Costs could vary widely depending upon the scope of work and methods used for implementation.

#### Step Four: Implementation

- CEQA/Permitting that may be required;
- Construction implementation;

#### Step Five: Monitoring

- Post construction monitoring as required by permitting agencies and/or Stewardship Council.

### **Youth Participation Element**

ARD proposes including a youth involvement program as part of the enhancement plan development, implementation, maintenance and monitoring. ARD would partner with Placer Land Trust to create and manage a youth program. The program activities would provide participating youth with educational experiences. Examples of activities that could be included are:

- Shadowing the professional consultant team through the enhancement project plan creation process including time in both the office and field. This would provide experience to individuals who seek a career path in environmental design and science.
- Tasks such as working on eradication of unwanted species and planting new trees/enhancement species during the implementation phase.
- Maintenance of the project doing weeding and general maintenance tasks. ARD has an excellent history of working with the community in the District doing a wide variety of maintenance tasks.
- Participation in the annual monitoring program with Placer Land Trust.

## Summary

ARD is requesting \$14,140 to contract with Dudek, a professional consultant team to conduct a site assessment/needs analysis that will inform the habitat enhancement components of an Enhancement Proposal to be submitted to the Stewardship Council. An Enhancement Proposal can be prepared that will identify costs to create, implement and monitor the enhancement project at Bell Road, based upon a defined scope of work for further consideration by the Stewardship Council. ARD anticipates developing the Enhancement Proposal concurrently with the fee title transfer of the property.

### Attachments:

Proposal from Dudek  
Aerial Vicinity Map Exhibit

March 11, 2014

Ms. Pamela Vann, Landscape Architect  
Auburn Recreation and Park District  
471 Maidu Drive  
Auburn, CA 95603

***Subject: Proposal to Conduct Site Assessment/Needs Analysis to Support Habitat Enhancement on the Approximately 22-acre Property at Bell Road and New Airport Way, Auburn, CA***

Dear Ms. Vann:

Dudek is excited to provide you and the Auburn Recreation and Park District (ARD) with our proposal to conduct a site assessment/needs analysis to support habitat enhancement on the approximately 22-acre property at Bell Road and New Airport Way in Auburn, California. Our proposal is based on our previous site visits, our Biological Constraints Assessment and Jurisdictional Determination for the project site, on-going conversations, and your Preliminary Proposal for a Natural System Enhancement Project for the Bell Road Property, dated March 7, 2014.

The site assessment/needs analysis will include an overall assessment of the 22-acre property by Dudek specialists in biology, wetlands, botany, forestry, cultural resources, and restoration and open space design and implementation, to identify needs and opportunities for habitat enhancement projects that would improve the site with respect to the six beneficial public values (BPVs) identified by the Stewardship Council's Enhancement Program Proposal Guidelines (2014). After each specialist has conducted their site assessment the team will collaborate to identify priority needs and opportunities for a habitat enhancement project for the site. Priority needs and opportunities will be called out as potential enhancement project components. Each potential enhancement project component will be directed toward improving a specific habitat type or resource area (historic resources could also be a component of the enhancement program). The site assessment/needs analysis will identify the BPVs that would be promoted by each of the potential enhancement project components. Recommendations for next steps would be included in a site assessment/needs analysis letter report provided under this scope of work.

Thank you for the opportunity to provide our proposal to conduct a site assessment/needs analysis in support of your efforts for the project; we look forward to working with you on this

**EXHIBIT A**  
**Scope of Work and Cost Estimate**

**22-acre Property at Bell Road and New Airport Way, Auburn CA**  
*March 11, 2014*

---

Dudek is proposing to conduct a reconnaissance-level Site Assessment/Needs Analysis. Under this scope, our team will conduct a site visit and prepare a letter report summarizing our findings and recommendations. This scope of work does not include project design, implementation prescriptions, or permits.

**Task 1      Conduct Project Initiation**

Dudek will initiate the assessment by reviewing available background information on the project site and conducting one meeting with ARD to discuss the project goals and objectives, and to receive any available existing aerial photography, base maps, conceptual designs, and topographic data for the project site from ARD.

**Deliverables:**

- Summary meeting minutes

*Total for Task 1.....\$1,660.00*

**Task 2      Conduct Site Inventory and Assessment**

Based on the information gathered in Task 1, Dudek’s team will conduct a reconnaissance-level site visit to inventory and assess the project site conditions for enhancement opportunities. The site assessment will be an interdisciplinary effort involving Dudek’s terrestrial and wetland biologist, botanist, forester, cultural resources specialist, and an ecologically focused landscape architect. The visit will be conducted on a single day. We will build on any previous work conducted for the project to avoid duplicating effort. The site assessment will include identifying high value habitat types and ecological resources and identifying onsite conditions that provide opportunities to promote beneficial public values by enhancing onsite conditions. This would include but not be limited to an investigation of soil types, hydrologic conditions, health and distribution of native and non-native vegetation onsite, existing wildlife habitat values, and historic and cultural resources. A preliminary review of onsite conditions indicates that the site provides potential opportunities for enhancing or expanding native oak woodlands and riparian/wetland habitats onsite, and for removing non-native species to promote a more native assemblage of plant species to the site and improve wildlife habitat.

## Exhibit A (Continued)

---

**Deliverables:**

- Site reconnaissance field work (1 field day)

*Total for Task 2.....\$8,490.00*

**Task 3      Prepare Site Assessment / Needs Analysis Letter Report**

Dudek will summarize its findings from Tasks 1 and 2 in a letter report for ARD's use in presenting to the Stewardship Council and to use in further refining and planning the project. The report will provide the results of field work and analysis, including identifying next steps and priority action items, recommending any additional studies needed, and providing preliminary suggestions for site enhancement that would best promote the beneficial public values of the site. The report will also include a brief preliminary implementation value analysis of the recommendations contained in our report (e.g., "high", "medium", or "low" cost). We expect to prepare one iteration of the letter report.

**Deliverables:**

- Site Assessment/Needs Analysis Letter Report

*Total for Task 3.....\$3,990.00*

**TOTAL PROPOSED COST**

Dudek's total proposed cost for the above tasks and services is provided below.

**TOTAL COST.....\$14,140.00**

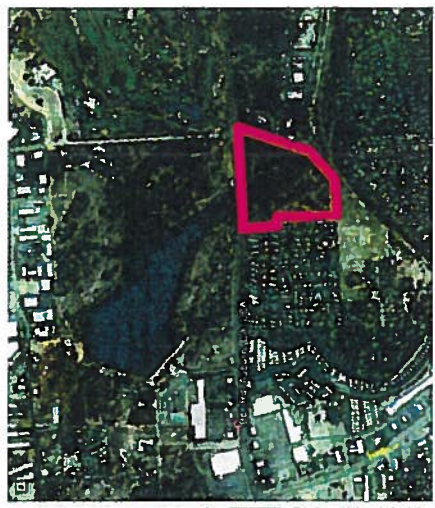


DRAWN BY  
 PAMELA VANN, P.L.A.

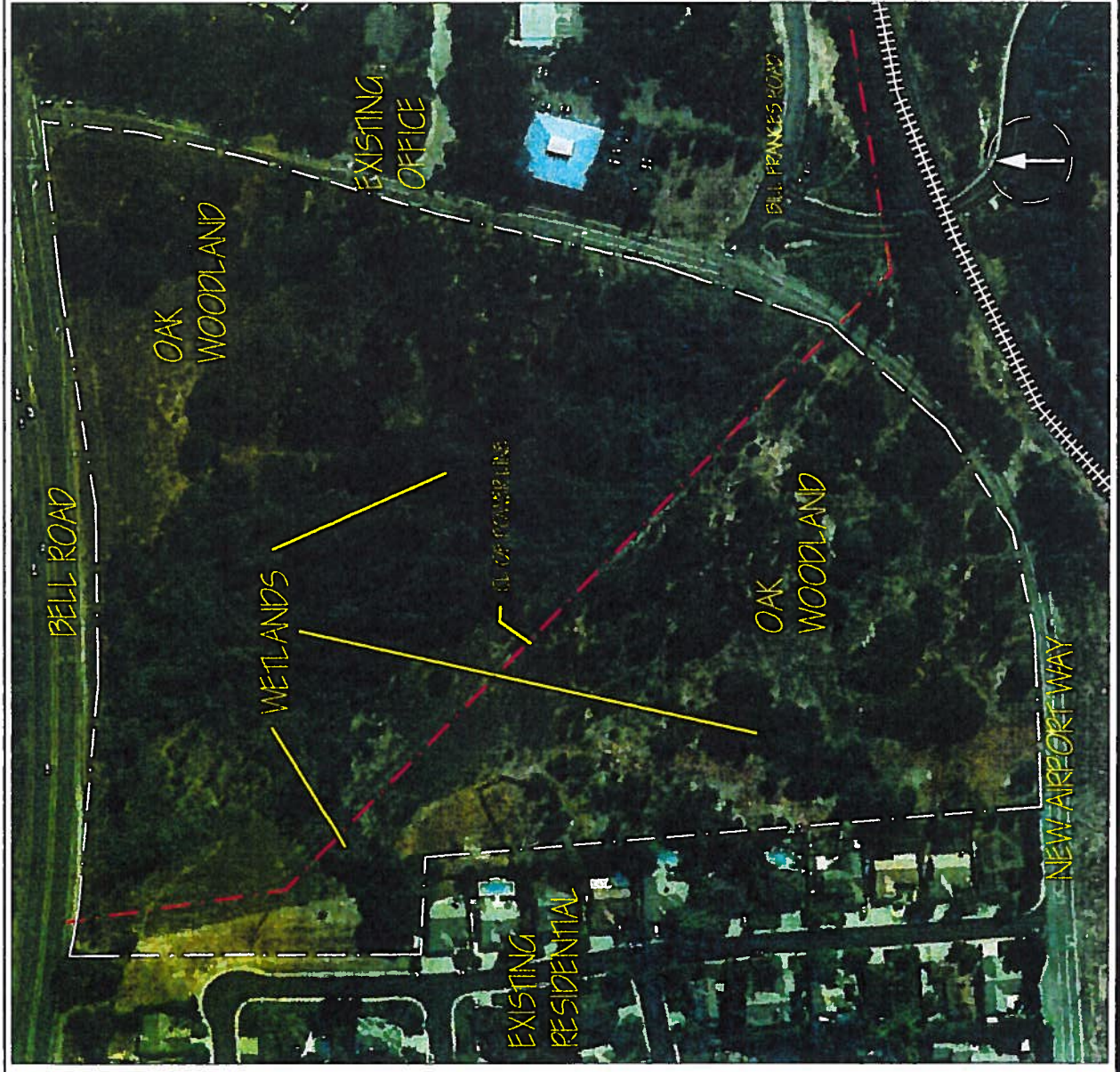
BELL ROAD PARK  
 VICINITY MAP  
 AUBURN AREA RECREATION AND PARK DISTRICT  
 471 WARDU DRIVE AUBURN, CA 95603



NOTES AND GENERAL INFORMATION:  
 SCALE: 1" = 100' (AS SHOWN)  
 DATE: 11/15/11  
 PROJECT: BELL ROAD PARK RECREATION



VICINITY MAP - NOT TO SCALE



## **Item 9.0 Cover sheet – Discussion item #3. Operation and Development Plan Public Outreach**

**Auburn Area Recreation and Park District (ARD) Board of Directors meeting March, 2014**

### **Subject**

A presentation and review of the public outreach strategy that will be used to help complete the Operation and Development Plan (OD) between ARD and the United States Bureau of Reclamation (USBR).

### **Background**

The Auburn Area Recreation and Park District (ARD) manages several properties as part of a management agreement with the United States Department of the Interior Bureau of Reclamation (USBR). This management agreement includes the management, development, operation and maintenance of CVCC, Railhead Park and Overlook Park and adjacent properties. This is a 25 year agreement that expires in 2025.

Per the agreement, ARD shall “construct and/or install, develop, manage, operate and maintain recreation facilities...in accordance with an Operation and Development Plan approved by the United States”. This OD Plan has never been completed. USBR is requiring that the Plan be completed before ARD makes further improvements to any of the managed properties.

This OD Plan will act as a 10 year master plan for the activities and development of the USBR properties managed by ARD. A key component of this OD Plan is to reach out to the public to get their input on what recreational activities are most desired. ARD staff has put together an Outline for Public Involvement (attached) that will help guide ARD through the process.

### **Recommendation**

Review the Outline for Public Involvement. Staff plans to start the process in April, 2014.

### **Fiscal Impact**

There will be incidental costs involved with the Focus Group meetings (light food and beverages).

### **Attachments**

Outline for Public Involvement in the Operation and Development Plan.

**AUBURN RECREATION AND PARK DISTRICT**  
**OPERATION AND DEVELOPMENT PLAN**

March 2014

**OUTLINE FOR PUBLIC INVOLVEMENT**

To better serve the Auburn Area and Recreation and Park District (ARD) members of the community and to determine the types and nature of desired recreational activities desired by the public, ARD proposes to implement the following public outreach strategy:

1. Public awareness and outreach through press releases in the Auburn Journal. This would include information regarding the development of the Operation and Development Plan for those lands ARD leases from the Bureau of Reclamation including Railhead Park, Overlook Park and the Canyon View Community Center and surrounding lands. ARD proposes a minimum of two releases over a thirty day time period that would endeavor to inform the public of the process and to solicit comment and input.
2. Use of the ARD website to inform and invite public participation. This would include a link on the home page which would take users to links that describe the O&D Plan, updates on progress, provide drafts for public review, invite comment on the draft O&D, and to invite participation through informal survey, invitation to meetings etc.
3. Public input through noticed public meetings including the monthly Acquisition & Development Committee and the monthly Board of Directors meeting. Input from the public will be solicited during the "public comment" period as well as during regularly scheduled agenda discussion and/or action items specific to the O & D Plan. Notice of the above public meetings will be given through the Auburn Journal, ARD website and bulletin boards at the Recreation Park and Canyon View Community Centers.
4. Focus Groups: ARD proposes to conduct a series of Focus Group meetings (minimum of 3 meetings). The Focus Group meetings will be divided among identified stakeholder groups who will be invited to attend and participate. Invitations will be given to a maximum of 12 individuals per meeting to maintain a productive level of discussion. Meetings will be held in the evenings (or late afternoon) to promote attendance and participation. Meeting time is to be a maximum of two hours. The following stakeholder groups have been identified and will be organized into Focus Groups:

Hikers/Runners  
ASRA  
PARC  
PCWA  
Bikers  
RCD

Equestrian Groups  
Maidu Neighbors  
Placer County  
CVCC Renters  
PG&E

Overlook Area Neighbors  
City of Auburn  
Soccer Community  
Placer High School  
Skaters

5. Informal discussions with identified community leaders and citizens

The above outreach strategy will be implemented in the spring of 2014 and ARD anticipates the Focus Group meetings will occur over an approximate six-week period, or one meeting every two weeks until completed. Additional Focus Groups meetings may be scheduled on an as-needed basis to provide stakeholders adequate time to consider ideas and provide input.

**SECTION 11.0**

**ITEM: CORRESPONDENCE/COMMUNICATIONS AND INFORMATIONAL**

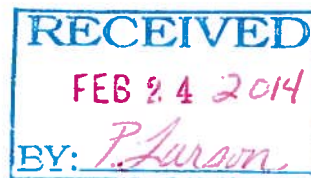
1. Correspondence from Placer County Visitors Bureau and response from Kahl Muscott.
2. Correspondence from Bicycle Emporium and response from Kahl Muscott.
3. Correspondence from Auburn Bike Company and response from Kahl Muscott.
4. Correspondence from Toby Briggs and response from Kahl Muscott.
5. Correspondence from Russell King and response from Kahl Muscott.
6. Correspondence from Auburn Union School District and response from Kahl Muscott.



# Placer County Visitors Bureau

1103 High Street • Auburn CA 95603 • 530-887-2111 • 530-887-2134 fax

866-752-2371 toll free • www.visitplacer.com



January 15, 2014

Auburn Area Recreation and Park District Board of Directors  
c/o Kahl Muscott, District Administrator  
Auburn Area Recreation and Parks District  
471 Maidu Drive  
Auburn, CA 95603

Dear Directors and Mr. Muscott:

Placer County Visitors Bureau supports the efforts of the Auburn Area Recreation and Parks District (ARD) to build the Auburn Bike Park and believe the bike park will be a great addition to our community!

The mission of Placer County Visitors Bureau (PCVB) is to market Placer County as a tourism destination while balancing economic benefits, quality of life and preservation of area resources. The PCVB works to increase visitor expenditures, tourism revenues and local employment opportunities through promotion of the area as a travel destination.

We believe the bike park will be a great asset to Auburn and most importantly, a great benefit to our children, youth and families. Auburn youth need safe places to ride and practice their bicycling skills. A bike park will encourage youth to get outside, exercise and socialize. The bike park will create life-long friendships and memories for our youth and will serve as a gathering place for our families and our community.

We thank the ARD for working over the last year with the community to vet and identify a location for the bike park. The ARD has selected a site that is bike-accessible and will encourage kids to ride their bikes to and from the bike park. And, the park will be available free-of-charge so that more children and youth can use the park. The bike park itself will have a skills-area to help youth increase their bike handling skills and build their self-confidence, all while having fun. The bike park is also a great compliment to our bicycle-oriented community, which hosts both mountain and road biking enthusiasts with its year-round bicycle-riding weather.

We thank you for your efforts to build an Auburn Bike Park!

Sincerely,

Mora Rowe  
Executive Director/CEO



---

## AUBURN AREA RECREATION AND PARK DISTRICT

---

February 25, 2014

Mora Rowe  
Placer County Visitors Bureau  
1103 High Street  
Auburn, CA 95603

Dear Ms. Rowe:

Thank you for your letter of support for the proposed Auburn Bike Park.

The Auburn Area Recreation and Park District is enthusiastic about opening this facility and always happy to hear of the support in the community.

Thank you again for your interest and your time.

Sincerely,

Kahl Muscott  
District Administrator

cc: ARD Board of Directors



Auburn Area Recreation and Park District Board of Directors  
C/o Kahl Muscott, District Administrator  
Auburn Area Recreation and Parks District  
471 Maidu Drive  
Auburn, CA 95603

To whom it may concern, Recreation Directors, and Mr. Muscott:

I would like to lend my support and applaud the efforts of the Auburn Area Recreation and Parks District (ARD) to build a Bike Park here in city we call home now for over 25 years. I believe the bike park will be a solid addition to our community and place where parents can spend time with their children other than the normal sports fields. Not that I don't love baseball, soccer, and the other fine sports, it's just that this is a more interment setting and another chance for us to connect with friends and family on a different level. *Machiavelli* once proclaimed a bicycle is mans greatest invention, I believe he was right.

I'm absolutely sure the bike park will be a great asset to Auburn, a great benefit to our children, and a place for us adults to be kids again. (You remember riding your first bike on trail don't you?). Auburn youths need safe places to ride and practice their bicycling skills and a Bike Park will encourage us all to get outside, exercise and socialize...

I thank the ARD for working over the last year with the community to vet and identify a location for the bike park. The ARD has selected a site that is bike-accessible and will encourage kids to ride their bikes to and from the bike park. And, the park will be available free-of-charge so more children and youths can use the park. The bike park itself will have a skills-area to help youth increase their bike handling skills and build their self-confidence, all while having fun. The bike park is also a great compliment to our bicycle-oriented community, which hosts both mountain and road biking enthusiasts with its year-round bicycle-riding weather.

Thank you for your efforts to build this asset to Auburn. The Auburn Bike Park!

Sincerely,

**Bill Marengo**

Owner

**Bicycle Emporium**





---

## AUBURN AREA RECREATION AND PARK DISTRICT

---

February 25, 2014

Mr. Bill Marengo  
Bicycle Emporium  
483 Grass Valley Hwy  
Auburn, CA 95603

Dear Mr. Marengo:

Thank you for your letter of support for the proposed Auburn Bike Park.

The Auburn Area Recreation and Park District is enthusiastic about opening this facility and always happy to hear of the support in the community.

Thank you again for your interest and your time.

Sincerely,

Kahl Muscott  
District Administrator

cc: ARD Board of Directors

**AUBURN BIKE COMPANY**

13122 Lincoln Way  
Auburn, Ca 95603  
Phone: 530-887-8888

**ARD Board**

471 Maidu Dr  
Auburn, CA 95603  
Phone: 530-885-0611

**Hello ARD Board Members:**

I am sending this letter to recommend that the Auburn Recreational District support the site awarded to the Auburn Bike Park. We are working towards a few grants that will help fund this great opportunity for the Auburn community. We appreciate your continued assistance in this project and look forward to seeing the project materialize. Thank you again.

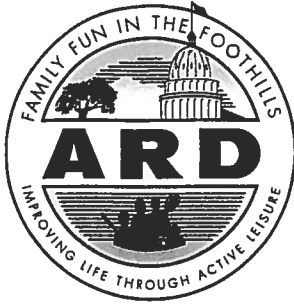
Sincerely,



---

**AUBURN BIKE COMPANY**

Curtis Christensen, President  
2/20/2014



---

## AUBURN AREA RECREATION AND PARK DISTRICT

---

February 25, 2014

Mr. Curtis Christensen  
Auburn Bike Company  
13122 Lincoln Way  
Auburn, CA 95603

Dear Mr. Christensen:

Thank you for your letter of support for the proposed Auburn Bike Park.

The Auburn Area Recreation and Park District is enthusiastic about opening this facility and always happy to hear of the support in the community.

Thank you again for your interest and your time.

Sincerely,

Kahl Muscott  
District Administrator

cc: ARD Board of Directors

**Toby Briggs**

1675 High St  
Auburn, Ca 95603  
Phone: 530-886-8183

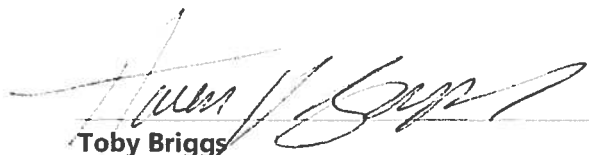
▶ **ARD Board**

471 Maidu Dr  
Auburn, CA 95603  
Phone: 530-885-0611

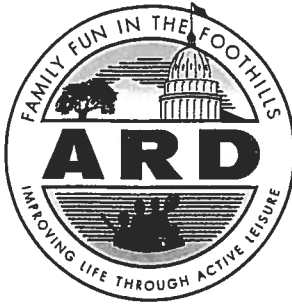
**Hello ARD Board Members:**

I am sending this letter to recommend that the Auburn Recreational District support the site awarded to the Auburn Bike Park. We are working towards a few grants that will help fund this great opportunity for the Auburn community. We appreciate your continued assistance in this project and look forward to seeing the project materialize. Thank you again.

Sincerely,



**Toby Briggs**  
Toby Briggs, CEO  
2/21/2014



---

## AUBURN AREA RECREATION AND PARK DISTRICT

---

February 25, 2014

Mr. Toby Briggs  
1675 High Street  
Auburn, CA 95603

Dear Mr. Briggs:

Thank you for your letter of support for the proposed Auburn Bike Park.

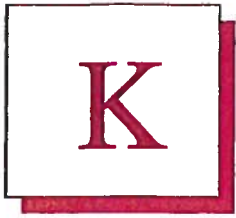
The Auburn Area Recreation and Park District is enthusiastic about opening this facility and always happy to hear of the support in the community.

Thank you again for your interest and your time.

Sincerely,

Kahl Muscott  
District Administrator

cc: ARD Board of Directors



King Family  
2493 Manhattan Bar Road  
Auburn, CA 95603

February 6, 2014

Auburn Area Recreation and Park District (ARD) Board of Directors  
c/o Kahl Muscott, District Administrator  
471 Maidu Drive  
Auburn, CA 95603

**Re: Auburn Bike Park project support**

Dear Directors and Mr. Muscott:

My family and I support the efforts of the Auburn Area Recreation and Parks District (ARD) to build the Auburn Bike Park and believe the bike park will be a great addition to our community!

My wife and I have two children, ages 7 and 9 and we discovered bike parks on a recent family vacation to British Columbia, Canada. Our kids absolutely loved riding the pump track and we spent many hours as a family riding and improving our bike skills. We were thrilled on our return to hear that Truckee has a bike park and thrilled even more to hear ARD is building one in Auburn. It will be ideal to have one local that we don't have to go to great expense and distance to visit.

The bike parks we have visited are all valuable community gathering spots and a great place to meet other families with similar hobby interests. The terrain at our house is too steep for our children to ride so having a bike park would be a huge benefit to our family and the whole biking community.

I want to thank the ARD for making this a priority and for working so diligently to select a location and build this much needed recreation amenity in Auburn. Our family can't wait to ride at the Auburn Bike Park. Thank you!

Best regards,,

Russell King  
Dad and small business owner

file:///C:/Users/king/Desktop/2014 bike park pr 02/06/14.doc



---

## AUBURN AREA RECREATION AND PARK DISTRICT

---

February 25, 2014

Mr. Russell King  
2493 Manhattan Bar Road  
Auburn, CA 95603

Dear Mr. King:

Thank you for your letter of support for the proposed Auburn Bike Park.

The Auburn Area Recreation and Park District is enthusiastic about opening this facility and always happy to hear of the support in the community.

Thank you again for your interest and your time.

Sincerely,

Kahl Muscott  
District Administrator

cc: ARD Board of Directors



AUBURN UNION SCHOOL DISTRICT  
255 EPPERLE LANE  
AUBURN, CA 95603  
PHONE 530.885.7242  
FAX 530.885.5170

February 26, 2014

Auburn Area Recreation and Park District Board of Directors  
c/o Kahl Muscott, District Administrator  
Auburn Area Recreation and Parks District  
471 Maidu Drive  
Auburn, CA 95603

Dear Directors and Mr. Muscott:

The Auburn Union School District supports the efforts of the Auburn Area Recreation and Parks District (ARD) to build the Auburn Bike Park and believe the bike park will be a great addition to our community!

We believe the bike park will be a great asset to Auburn and most importantly, a great benefit to our children, youth and families. Auburn youth need safe places to ride and practice their bicycling skills. A bike park will encourage youth to get outside, exercise and socialize. The bike park will create life-long friendships and memories for our youth and will serve as a gathering place for our families and our community.

We thank the ARD for working over the last year with the community to vet and identify a location for the bike park. The ARD has selected a site that is bike-accessible and will encourage kids to ride their bikes to and from the bike park. And, the park will be available free-of-charge so that more children and youth can use the park. The bike park itself will have a skills-area to help youth increase their bike handling skills and build their self-confidence, all while having fun. The bike park is also a great compliment to our bicycle-oriented community, which hosts both mountain and road biking enthusiasts with its year-round bicycle-riding weather.

We thank you for your efforts to build an Auburn Bike Park!

Sincerely,

Laura Grassmann  
Interim Superintendent





---

*AUBURN AREA RECREATION AND PARK DISTRICT*

---

March 10, 2014

Ms. Laura Grassmann  
Auburn Union School District  
255 Epperle Lane  
Auburn, CA 95603

Dear Ms. Grassmann:

Thank you for your letter of support for the proposed Auburn Bike Park.

The Auburn Area Recreation and Park District is enthusiastic about opening this facility and always happy to hear of the support in the community.

Thank you again for your interest and your time.

Sincerely,

Kahl Muscott  
District Administrator

cc: ARD Board of Directors

February 27, 2014 | Your Neighbor Since 1872

# Auburn Journal

currently: **50°F**  
Mostly Cloudy  
tomorrow: High **55°F**  
Low **46°F**

Search

NEWS SPORTS LIVING OPINION MULTIMEDIA CALENDAR OBITUARIES CLASSIFIEDS

Thursday Feb 27 2014 | 5 comments

Shar6har6hare 0

## ARD Board to discuss gates, geese

Directors hopeful to curb disruptive nighttime activity at Overlook Park

By: Amy Lobenberg, Journal Staff Writer



Auburn Area Recreation and Park District directors meeting will discuss a final step needed to install gates around Overlook Park and possible solutions to geese population control at Regional and Meadow Vista Parks.

The idea of installing security gates around Overlook Park was approved at an ARD directors meeting on Nov. 21, after residents in the surrounding Gold Street neighborhood voiced complaints about youths loitering after hours, committing vandalism and making noise.

ARD directors and staff have since been working with the Auburn Police and Fire departments to implement final steps before beginning construction. Once built, the fences and gates will be locked at night to keep vehicles out.

At tonight's board meeting, directors will approve a notice of categorical exemption for the construction per the California Environmental Quality Act before sending the final plans off to the U.S. Bureau of Reclamation, which owns the land, for final approval.

According to ARD District Administrator Kahl Muscott, the gates are exempt from CEQA regulations because the park has already been

built. He added that construction will likely start in April or May and will take three or four days. The project would cost about \$7,500, which will come from ARD's general fund.

"With every project that we do, we have to follow environmental regulations, especially since this is federal land," said ARD Board Chairman Scott Holbrook. "It's mandatory."

Holbrook added that he thinks the gates and fencing will reduce the problems occurring in the park after dark.

"Putting in a gate won't significantly impact the neighbors ... actually it will help; that's what it's there for," Holbrook said. "The gate will prevent cars from going in there. Technically the park is closed at dusk. This is just one little measure. It's not a big deal at all, but hopefully it will help some of the Gold Street neighbors."

Auburn Police Chief John Ruffcorn said that his officers have noted unsavory activity occurring at Overlook Park and added that he fully supports the addition of gates.

### Related Stories

Region narrowly escapes Stage 4 water emergency

Mystery gold coin cache found in Auburn area? Speculation abounds

Chamberlain lawyer legacy lives on in new Auburn trail, preserve

Heath to help city with budget

Supes tweak Placer's guidelines for transitional homeless housing

### This Weeks Inserts



Big Lots Expires this Saturday



Big 5 Sporting Goods 3 Days Left

View All

### Flyerboard

VIEW ALL



OFFICE DESK (3) - MUST GO 1550 VERY GOOD CONDITION AND QUALITY PLEASE CALL FOR DETAILS AND TO SEE. (531) 613-7355

"A lot of the issues are after hours when no one's around," Ruffcorn said. "We want to encourage people to use are parks but we want to encourage people to use our parks responsibly. We have caught people there drinking, smoking marijuana and they don't have med cards. Any type of preventative things that we can do, I am in favor of. I don't like it when it comes to this, but I am in full support of what they are doing."

Also at tonight's meeting, the ARD Acquisition and Development Committee will discuss an ongoing goose problem at Regional and Meadow Vista Parks. Specifically, goose droppings have significantly increased over the last couple of months, which resulted in several complaints from park visitors.

According to Muscott, the birds in question are non-native Canadian Geese. So far, ARD staffers have used coyote decoys -- two of which have been stolen -- that require being moved around every day. ARD is also considering buying a device called a GooseBuster, which emits a goose distress call.

"We are having a worse-than-ever year with geese at Regional and Meadow Vista Park," said Muscott. "We have done some minor measures at this point and are looking to see what we can continue to do to protect our parks."

According to Holbrook, pet ducks, often acquired around Easter, have been abandoned in park ponds, adding to the goose problem.

He hopes the problem can be solved cheaply.

"(Canadian Geese) became protected years ago and the population has exploded," Holbrook said. "Sacramento had similar problems and wound up spending hundreds of thousands of dollars on their geese issues."

ARD Directors meet at 6 p.m. at Canyon View Community Center, 471 Maidu Drive, Auburn.

**Keywords:**

[Auburn Area Recreation and Park District overlook park](#) [Regional Park meadow vista park](#) [Scott Holbrook](#) [Kahi Muscott](#) [John Ruffcorn](#)

Local display advertising by PaperG



Olympus DP-201 Digital Voice Recorder (Silver)

**\$35.99**

See Weekly Ad Deals

**CONTRIBUTE TO THIS STORY**

**SEND LETTER TO THE EDITOR**

**SEND STORY IDEAS**

**SEND CORRECTIONS**

**SIGN UP FOR OUR EMAIL NEWSLETTER**

Add a comment

Comment



**Scott Holbrook** Top Commenter CEO/Janitor at Scott's Econo Lube N' Tune & Brakes  
Some good info here <http://ohioline.osu.edu/av-fact/pdf/0003.pdf>, [http://www.dec.ny.gov/docs/wildlife\\_pdf/geeseproblem.pdf](http://www.dec.ny.gov/docs/wildlife_pdf/geeseproblem.pdf)  
[Reply](#) [Like](#) 2 hours ago



**Pablo Sust** Top Commenter Newcastle, California  
Not arguing with facts, but I know from past experience that this will provide some very animated letters and comments. Hey, it's raining, this is a form of indoor entertainment  
[Reply](#) [Like](#) about an hour ago



**Jeff Root** Top Commenter Works at Root Laboratory, Inc  
Perhaps the pond should be removed. The small pond creates a big problem for park users. To me it seems the vast majority of the park users are not there because of the pond. Remove the pond and the goose problem should be resolved because the geese will find somewhere else to congregate.  
[Reply](#) [1 Like](#) 52 minutes ago



**Pablo Sust** Top Commenter Newcastle, California  
This goose issue promises to be very entertaining. Looking forward to letters and comments from both sides.  
[Reply](#) [Like](#) 2 hours ago



**Bryan Fierstein** Top Commenter  
Lose the ponds and you lose the grass...  
[Reply](#) [Like](#) 12 minutes ago

Facebook social plugin

February 28, 2014 | Your Neighbor Since 1872

# Auburn Journal

currently 50°F Mostly Cloudy  
tomorrow High 66°F Low 46°F

Search

NEWS SPORTS LIVING OPINION MULTIMEDIA CALENDAR OBITUARIES CLASSIFIEDS

Friday Feb 28 2014 | 30 comments

Shar6har6hare 0

## Solutions for goose control remain up in the air at ARD meeting

Board of Directors makes some suggestions, sends matter back to staff

By: Amy Lobenberg, Journal Staff Writer



The Auburn Area Recreation and Park District Board of Directors Thursday night approved one of the final steps needed to install gates at Overlook Park and continued the issue of humane Canada geese control that plagues two of the district's facilities.



The idea of security gates around Overlook Park was approved at an ARD directors meeting on Nov. 21, after residents in the surrounding Gold Street neighborhood voiced complaints about youths loitering after hours, committing vandalism and making noise.

Directors unanimously approved the notice of categorical exemption for the construction per the California Environmental Quality Act and will soon send the final plans off to the U.S. Bureau of Reclamation, which owns the land, for final approval.

Later in the meeting, the ARD Acquisition and Development Committee addressed an ongoing goose problem at Regional and Meadow Vista parks. According to ARD staff and park users, goose droppings have increased over the last couple of months, rendering the parks almost unusable.

**COME SEE WHAT \$20.14 WILL DO TO YOUR BODY!**  
Auburn Racquet & Fitness Club  
530-885-1602 More Info

According to ARD Administrative Director Kahl Muscott, the birds in question are non-native Canada geese. So far, ARD staffers have used coyote decoys -- two of which have been stolen -- that require being moved around every day and are looking at purchasing a device called a GooseBuster, which emits a goose distress call.

Director Scott Holbrook said he was willing to try whatever might work in order to get rid of the birds.

"I'm all for eliminating as many geese as we can," said Holbrook. "I have stacks of reports of damage and costs of geese invading ponds."

Holbrooke said he believed the domestic duck and geese populations at the parks' ponds should also be eliminated.

"The domestic ones attract the wild ones," said Holbrook.

The idea worried Director Gordy Ainsleigh.

"A goose-less park pond seems to be almost sacrilegious," said Ainsleigh.

### Related Stories

Jail inmate to be remembered with North Auburn candlelight vigil

Media Life: Celebrating World Series hero, boogie band, WWII hospital anniversaries

Confederate controversy: Moral fortitude or militant racism?

Auburn schools talk student privacy, technology concerns

Hoppy days are here again for Auburn beer enthusiasts

**Pitney Bowes**  
**SAVE 2%**  
ON ALL YOUR EVERYDAY MAILING  
PLUS \$100 FREE POSTAGE  
60-DAY FREE TRIAL

### This Weeks Inserts



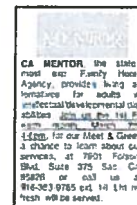
JCPenney  
2 Days Left



Musician's Friend  
Expires this Monday

View All

### Flyerboard



OFFICE DESKS (3) - ASKET GO 8550 VERY GOOD CONDITION AND QUALITY PLEASE CALL FOR DETAILS AND TO SEE (530) 812-7256

ARD's facilities and grounds operations manager, Larry Gray, said that the primary issue with the geese is their droppings, which are normally washed away by the rain.

[Local display advertising by PaperG](#)

"Without the rain it gets really bad out there," said Gray. "With the mild weather that we had those supposedly migratory birds came and stayed."

He suggested putting up signs asking park-goers not to feed the geese.

Muscott pointed out that according to California Fish and Wildlife rules, non-lethal hazing is allowed.

Members of the audience suggested using trained dogs to reduce goose numbers, but Muscott noted that services, commonly used by golf courses, could cost up to \$35,000 per year.

The ARD Board of Directors eventually decided to send the predicament back to staff to contemplate further solutions, with one final suggestion voiced by Ainsleigh.

"Right now it's prohibited to harass the animals and I think we should make a suggestion for Canadian geese," said Ainsleigh. "Let the kids chase them."

#### Keywords:

[Canada geese](#) [ARD board of directors](#) [overlook park meadow vista park](#) [Regional Park Scott Holbrook](#) [Kahl Muscott](#) [Gordy Ainsleigh](#) [Larry Gray](#)

#### CONTRIBUTE TO THIS STORY

 **SEND LETTER TO THE EDITOR**

 **SEND STORY IDEAS**

 **SEND CORRECTIONS**

 **SIGN UP FOR OUR EMAIL NEWSLETTER**

Add a comment

Comment



**Sharon Gannon** Top Commenter Owner at The Bookkeeping Guru

I have a springer spaniel that would happily clear up that goose issue

[Reply](#) [2 Like](#) 3 hours ago



**Rich Reeves** Placer High School

whats wrong with you people ? goose dinner for all , mmm delicious!

[Reply](#) [2 Like](#) 3 hours ago



**Bob Rogers** Top Commenter

It's not a hunting preserve

[Reply](#) [Like](#) 2 hours ago



**Mark Davis** Top Commenter Auburn California

Bob Rogers Yeah, Its becoming a Goosecrap reserve

[Reply](#) [Like](#) 2 hours ago



**Bob Rogers** Top Commenter

Mark Davis .Hunting them there isn't the answer In fact it would be the most inefficient method of eradicating them or reducing their numbers

[Reply](#) [Like](#) 2 hours ago

[View 2 more](#)



**Scott Holbrook** Top Commenter CEO/Janitor at Scott's Econo Lube N Tune & Brakes

This is a growing problem, it is not static issue & it poses real health risks - we do not have \$300 000 to clean out a single pond like Sacramento is doing. Responsible population control is a prudent manner to address the situation - Auburn is not immune from the problems that all these other areas have - alas we do not have a university and or state organization commissioning an expensive study..... the facts are the facts, the Growing Geese populations in Northern California create damage to parks, create an increased maintenance burden and can pose real health risks. I for one appreciate the proactive approach of the ARD Staff and the continuing discussions and awareness of the concerns raised. We run on a shoestring budget & our resources are stretched very thin - preventative maintenance is the best way to control costs

[Reply](#) [1 Like](#) about an hour ago



**Pablo Sust** Top Commenter Newcastle California

Geese can be very mean, I wouldn't want a little kid chasing them since they will turn the tide on them and peck the heck out of them. My neighbor had one in his pond that would attack anyone coming near the edge of the pond, big nasty sucker.

[Reply](#) [1 Like](#) 3 hours ago



**Scott Holbrook** Top Commenter CEO/Janitor at Scott's Econo Lube N Tune & Brakes

March 5, 2014 | Your Neighbor Since 1872

# Auburn Journal

currently 57°F Scattered Clouds  
forecast: High 64°F Low 46°F

Search

NEWS SPORTS LIVING OPINION MULTIMEDIA CALENDAR OBITUARIES CLASSIFIEDS

Tuesday Mar 04 2014 | 13 comments

Share 0

## Reader Input: Bike park comments inflammatory

### Related Stories

- Another View: PCWA works to meet stewardship commitments
- Reader Input: Why squash teen's opinion?
- Reader Input: Make public the tragic facts
- Reader Input: Savor nectar of the gods
- Reader Input: ARD threatens Meadow Vista geese

**Pitney Bowes**  
**SAVE 2%**  
 ON ALL YOUR EVERYDAY MAILING  
**PLUS \$100 FREE POSTAGE**  
**60-DAY FREE TRIAL**

Richard Hadley's column ("Bike park project needs environmental review," Reader Input, Feb. 28) raised several potential risks with Auburn Recreation District's choice of the Maidu site for the future Auburn Bike Park — wildfire, parking, traffic, noise, conflicts with existing recreational uses, parties and drugs at night. Setting aside the fact that ARD is performing an environmental analysis as required, I find Mr. Hadley's comments inflammatory and uninformed. It demonstrates unfamiliarity with bike parks and this user group. If Mr. Hadley has

time, I encourage him to visit the Truckee, Folsom or Elk Grove bike parks so that he can educate himself before blindly assuming what might occur with a bike park. Those bike parks are cherished by kids as young as 2 up through adults who love to ride. Bicycling is a very physically demanding sport and riders care about their health. It's a little tough to smoke while riding a bike. And by removing underbrush and adding dirt tracks, Mr. Hadley should know based on his professional experience that this will in fact reduce fire danger, not increase it.

We need a bike park for our kids because our streets are too dangerous, our trails are too technical and kids love to ride in the dirt. Our youth and our families deserve to enjoy the canyon just like everyone else. Kids shouldn't be shoved into some dark corner, out of sight, out of mind.

Unfortunately, every time ARD has considered a bike park site (19 sites so far), there's a complaint of what "might" happen and it's always bad.

Rather than working with ARD, those who fear it try to squash it. That's a shame. Auburn is a bicycle-centric town and an economic engine that needs a bike park to meet a growing demand from Auburn families. We have five bike shops that serve Auburn. Visit downtown Auburn on a weekend to see cars with bikes, showing folks eating lunch and dinner after a ride. Amgen's third tour through Auburn is a testament to our bike-loving community. The Auburn City Council, Auburn Gold Country Rotary, Placer County Visitors Bureau, Auburn Union School District and many others support the bike park in Auburn.

I encourage those living in the Auburn area and who support the Auburn Bike Park at the Maidu Drive/Pleasant Avenue site to let ARD know we stand behind them!

Diana Boyer, Auburn

### Keywords:

Diana Boyer auburn Richard Hadley ARD bike park Auburn Recreation District Maidu Auburn City Council Auburn Gold Country Rotary Placer County Visitors Bureau Auburn Union School District Auburn Bike Park

**the Auburn Symphony**  
 PRESENTS  
 MASTERWORKS SERIES MARCH 8 & 9  
 AT PLACER HIGH AUDITORIUM  
**ELEGANT Mischief**  
 MARQUETTE LUPE  
 EPHRAIM ZINSCHER  
 Click for more info and TICKETS!

### This Weeks Inserts

JCPenney  
Sneak Peek

Big 5 Sporting Goods  
4 Days Left

View All

### Flyerboard

Is Your Child Thriving?  
 Share Your Success  
 Share Your Story  
 Share Your Knowledge  
 Share Your Passion  
 Share Your Inspiration  
 Share Your Inspiration  
 Share Your Inspiration  
 Share Your Inspiration

WANTED: All Types of RV's  
 Cash Buyer On The Spot!  
 (916) 757-2937

**YOUR FLYER HERE**  
 Advertise your local business, listing, or event on the Flyerboard.

Local display advertising by PaperG

SEND LETTER TO THE EDITOR

SEND STORY IDEAS

SEND CORRECTIONS

SIGN UP FOR OUR EMAIL NEWSLETTER

CONTRIBUTE TO THIS STORY

ABOUT US | CONTACT US | SUBSCRIBE | ADVERTISING | ARCHIVE | AUBURN LEADER | SOCIAL MEDIA

March 7, 2014 | Your Neighbor Since 1872

# Auburn Journal

currently 66°F Clear  
tomorrow High 70°F Low 62°F

Search

NEWS SPORTS LIVING OPINION MULTIMEDIA CALENDAR OBITUARIES CLASSIFIEDS

Friday Mar 07 2014 | 42 comments

Shar6har6hare 3

## Reader Input: Trail site poor choice for track

Auburn Recreation District (ARD) is developing a pump track for mountain bikes ("ARD unanimously OKs bike park location," Journal, Dec. 20, 2013).

This is a good idea, just the wrong location. There were 18 locations being considered for the pump track park. Of the 18 locations, they have chosen the wrong location, the one off Maidu Drive. One of their other options is the North Auburn Regional Park, the right location for the pump track park.

The Maidu Drive location pump park is divided into sections, with one section on each side of historic Pioneer Express Trail. The Pioneer Express Trail is a hiking/equestrian trail that today and for decades has provided breathtaking views of the North Fork of the American River canyon and river, with a changing ambience throughout the changing seasons. These trails have and continue to provide experiences where personal memories are made. I spoke to my son, who is an adult, and who spent many years on this trail. He is now an avid golfer. Building a pump track park in the Maidu location equates to playing a round of golf, and on the 18th hole finds a pump park that is divided in half and placed on each side of the fairway between the tee and the green. In addition, for the mountain bikes to access each section of the pump track park, they would cross over the fairway. The Pioneer Express Trail is not just a simple trail, it has value, and should be protected and preserved.

Donna Williams, Loomis

### Keywords:

donna williams Loomis Pioneer Express Trail North Auburn Regional Park pump track Bicycle bike track American River hiking Equestrian maidu drive Auburn Recreation District ARD

### CONTRIBUTE TO THIS STORY

SEND LETTER TO THE EDITOR

SEND STORY IDEAS

SEND CORRECTIONS

SIGN UP FOR OUR EMAIL NEWSLETTER

Add a comment...

Comment



Jason Boyer Auburn California

Donna Williams

I normally stay out of the comments section since arguing over forums doesn't usually lend itself to any progress. However, your remarks continue to show ignorance and are causing me to really question your voice for equestrian groups. You stated it's a good idea but the site is the wrong choice. You can't sugar coat it and backhand it at the same time. Your preference is a distant location away from any development. However, you recently stated at the past ARD meeting in group discussion that it needed to be in a developed area so it's under a watchful eye. So, which is it Donna? Why would locating a pump track, near a skatepark, soccer fields, recreation park, baseball diamonds, community pool, three local schools, infrastructure and facilities, built out of the immediate earshot of a residential neighborhood, ... See More

### Related Stories

Media Life: Digging into Placer's Oscar connectivity; deepening gold-coin mystery

Reader Input: Flag-wearer got what he wanted

Another View: Unity, persuasion are the keys to success for GOP

Reader Input: Suit settlement shocks reader

Reader Input: Work to let history, commerce co-exist



What Happens When You Take a Testosterone Supplement



How Cruise Lines Fill All Those Unsold Cruise Cabins



How New iPads are Selling for Under \$40

### This Weeks Inserts



PetSmart USA Expires this Sunday



Guitar Center Expires this Monday

View All

### Flyerboard



WANTED: All Types of RV's Cash Buyer On The Spot! (916) 757 2037



EVENT LOG IN | CREATE EVENT ACCOUNT | CONTACT US | E-EDITION | SUBSCRIBER SERVICES | RESPONSE & FEEDBACK | AUBURN TRAILER | SPECIAL SECTIONS

March 18, 2014 | Your Neighbor Since 1872

# Auburn Journal

currently 52°F Clear tomorrow High 72°F Low 46°F

Search

NEWS | SPORTS | LIVING | OPINION | MULTIMEDIA | CALENDAR | OBITUARIES | CLASSIFIEDS

Tuesday Mar 18 2014 | 3 comments

Share & Share 0

### Related Stories

## Reader Input: Bike park better sited at Regional

- Reader Input: Letter writer a model for all
- Reader Input: US government frightens reader
- Reader Input: McClintock challenger a blank slate
- Another View: Our education system needs an overhaul
- Reader input: Elect the genuine local for US rep



The new bike park could be the jewel in the crown of Auburn Recreation District's attractions if it were located at the 24-acre open space at Regional Park and not at the Maidu Community Center.

At Regional Park there is good public visibility, and since bike parks are one of the fastest growing activities in the country, the high visibility will attract more users. The location near the Community Center is out of the way, hard to find and not visible to most of the public. Facilities like parking and restrooms are already

in place at Regional.

There is more room for expansion here than at the Community Center site and expansion would allow growth of local contests into regional competitions, attracting visitors from all over Northern California. And these visitors would bring dollars into the area.

Locating the new bike track at Auburn Regional Park would be an investment in the future with higher return to the community than placing it at the Maidu Center site. I urge ARD to reconsider its choice of locations for the new bike pump track.

Donna Furlow, Granite Bay

### Keywords:

Donna Furlow Granite Bay bike park Auburn Recreation District Maidu community center ARD Northern California Auburn Regional Park

### CONTRIBUTE TO THIS STORY

SEND LETTER TO THE EDITOR

SEND STORY IDEAS

SEND CORRECTIONS

SIGN UP FOR OUR EMAIL NEWSLETTER



### This Weeks Inserts



Rite Aid 5 Days Left



PetSmart USA 11 Days Left

View All

### Flyerboard



Local display advertising by PaperG