

## Aquatics 18-19 Budget Revenues

	FY 19-20		Prelim
	Actual	Mid Year	20/21
Adult Aquatic Activities	10,501	7,170	10,501
Adult Aquatic Activities Placer Hills	0	2,610	0
Master Swim	4,438	4,520	4,438
Public Swim	41,614	41,410	41,614
Public Swim - Placer Hills Pool	3,954	3,960	3,954
Swim Lessons	29,572	29,560	31,258
Swim Lessons - Placer Hills Pool	9,890	9,890	10,454
Swim Team	15,342	15,830	16,078
Synchro Team	9,860	9,740	10,422
Misc Income	0	0	0
<b>Totals</b>	<b>125,171</b>	<b>124,690</b>	<b>128,719</b>
<b>Rents &amp; Concessions</b>			
Sierra/Splash Pool Rental	13,223	11,160	15,984
Placer Hills Pool rental	1,861	1,860	1,954
<b>Totals</b>	<b>15,084</b>	<b>13,020</b>	<b>17,938</b>
<b>Grants &amp; Donations</b>			
Donation Rev - Aquatics	0	0	0
<b>Other Financing Sources</b>			
Transfers from Future Capital Constr.	0	0	0
Transfers from Equipment Reserv	0	0	9,000
Transfers from ADA Reserv	0	0	0
City Mitigation Apportionment	0	0	0
<b>Totals</b>	<b>0</b>	<b>0</b>	<b>9,000</b>
<b>Total Revenues</b>	<b>137,874</b>	<b>137,710</b>	<b>155,657</b>

## Expenditures

	FY 19-20		Prelim
	Actual	Mid Year	20/21
<b>Program Expenditures</b>			
Instructors - Aquatics	1,877	1,890	1,933
Adult Aquatic Activities Exp.	775	1,590	839
Public Swim Expenses	2,756	2,760	2,839
Public Swim Expenses PH	491	490	506
Swim Lessons Expenses	102	110	105
Swim Team Expenses	824	1,440	1,249
Synchro Team Expenses	726	630	748
<b>Totals</b>	<b>7,551</b>	<b>8,910</b>	<b>8,219</b>

Aquatics

**Operations & Supplies**

Telephone - Placer Hills Pool  
 Telephone - Aquatics  
 Office Supplies  
 Gas Milleage - Aquatics  
 Professional Services  
 Staff Appreciation- Aquatics  
 Staff Development- Aquatics  
 Safety Supplies - Aquatics  
 Small Equipment  
 Small Equipment - PH Pool  
 Uniform Exp

750	1,100	848
0	0	0
46	10	47
0	0	0
274	270	282
0	0	0
292	570	301
200	200	206
1,430	1,430	1,473
0	0	0
0	0	0
<b>Totals</b>	<b>2,992</b>	<b>3,580</b>

**Utilities**

Gas/Electric - Sierra Pool  
 Gas/Electric - Placer Hills  
**Reimbursement - Gas/Electric**

27,601	26,950	29,257
4,581	6,170	4,856
-10,565	-10,570	-11,199
3,069	2,030	3,253
776	260	823
-1,270	-1,270	-1,346
<b>Totals</b>	<b>24,192</b>	<b>23,570</b>

Water - Sierra Pool  
 Water - Placer Hills  
**Reimbursement - Water**

**Maintenance**

Maintenance - Sierra Pool  
**Reimbursement - Maintenance**

44,051	36,690	45,373
-4,434	-4,430	-4,567
12,330	9,860	12,700
<b>Totals</b>	<b>51,947</b>	<b>42,120</b>

Maintenance - Placer Hills pool  
**Totals**

**Salaries/Wages Expenses**

**Prelim**

FY 19-20

Wages - Aquatics Coordinator  
 Wages - Aqua Coord - Placer Hills  
 Wages - Adult aquatics  
 Wages - Public Swim  
 Wages - Public Swim - PH Pool  
 Wages - Swim Lessons  
 Wages - Swim Lessons - PH Pool  
 Wages - Master Swim  
 Wages - Coaches (Swim Team)  
 Wages - Coaches (Synchro)

	Actual	Mid Year	20/21
Wages - Aquatics Coordinator	19,250	19,390	20,660
Wages - Aqua Coord - Placer Hills	154	0	0
Wages - Adult aquatics	6,572	6,560	8,886
Wages - Public Swim	56,502	58,230	59,810
Wages - Public Swim - PH Pool	7,581	7,580	9,888
Wages - Swim Lessons	7,582	7,550	11,100
Wages - Swim Lessons - PH Pool	3,377	3,370	4,000
Wages - Master Swim	4,079	4,060	4,839
Wages - Coaches (Swim Team)	7,174	7,540	13,436
Wages - Coaches (Synchro)	15,810	15,810	18,913
<b>Totals</b>	<b>128,081</b>	<b>130,090</b>	<b>151,532</b>

**Totals**

**138,732**

**Benefits & Payroll Costs**

ER -Taxes -(12.65%)

12,568	12,540	12,842
--------	--------	--------

Aquatics

Employment Exp- Aquatics	2,590	2,530	2,668
Fingerprinting Exp- Aquatics	777	660	800
Calpers Exp. 16.444%	3,060	3,090	4,143
Worker's Comp (2.29% x 1.14%)	2,826	2,940	2,866
<b>Totals</b>	<b>21,821</b>	<b>21,760</b>	<b>23,319</b>

**Equipment & Fixed Assets**

Fixed Assets - Aquatics	12,101	12,100	9,000
<b>Totals</b>	<b>12,101</b>	<b>12,100</b>	<b>9,000</b>

0	0	0
0	0	0

<b>Total Expenditures</b>	<b>248,685</b>	<b>242,130</b>	<b>274,376</b>
<b>Total Revenues</b>	<b>137,874</b>	<b>137,710</b>	<b>155,657</b>
<b>Total Expenditures</b>	<b>248,685</b>	<b>242,130</b>	<b>274,376</b>
<b>Contingency 2% of expenses</b>	<b>2,428</b>	<b>2,589</b>	<b>2,744</b>
<b>Net Gain (Loss)</b>	<b>-113,239</b>	<b>-107,009</b>	<b>-121,463</b>

Aquatics

## Youth Services 2019-2020 Budget Revenues

FY 19-20 Actual

Mid Year

Prelim  
20/21

Actual to Date    Budget Revision

Alta Vista DSC Revenue	73,011	69,430	76,662
Auburn Elem DSC Revenue	146,940	138,980	154,287
Skyridge DSC Revenue	112,022	112,220	117,623
Rec Day Camp Rev (School & Summer)	253,704	274,600	266,389
Preschool	72,442	72,550	76,064
Newcastle DSC Revenue	157,873	135,810	165,767
<b>TOTAL</b>	<b>815,992</b>	<b>803,590</b>	<b>856,792</b>

### Rents & Concessions

Rock Creek Modular Rent	3,900	3,900	4,399
-------------------------	-------	-------	-------

### Miscellaneous Revenue

	10	0	0
--	----	---	---

### Total Revenues

819,902                      807,490                      **861,191**

## Expenses

### Program Expenditures

FY 19-20 Actual

Mid Year

Prelim  
20/21

Actual to Date    Budget Revision

Alta Vista Program expense	3,113	2,620	3,556
Auburn Elem - Program Expense	2,334	2,780	3,387
Skyridge - Program Expense	3,162	3,440	3,660
Rec Day Camp - Program Exp (Sch. & Sum)	20,755	21,340	21,390
Preschool	2,565	5,390	2,355
Newcastle - Program Expense	3,595	3,860	4,370
	<b>35,524</b>	<b>39,430</b>	<b>38,717</b>

### Operations & Supplies

Advertising - Youth Services	166	0	135
Telephone - Youth Services (Cell phones)	237	286	384
Telephone - Preschool	0	1	0
Telephone - Rec Day Camp Modular	3,290	3,419	2,856
Telephone - Newcastle	297	470	413
Telephone- Auburn Elem	2,261	2,020	2,122
Telephone - Alta Vista	242	410	384
Telephone- Skyridge	1,590	1,380	1,620
Office Supplies - Youth Services	475	830	489

Youth Service

Gas/Mileage Reimbursement Expense  
 Dues and Subscriptions  
 Staff Appreciation - Youth Services  
 Staff Development - Youth Services  
 Small Equipment  
**TOTAL**

50	80	<b>45</b>
199	40	<b>166</b>
213	190	<b>178</b>
279	430	<b>152</b>
0	80	<b>165</b>
<b>9,299</b>	<b>9,636</b>	<b>9,110</b>

**Utilites**

Electric - Day Camp

1,548	1,770	<b>1,789</b>
<b>1,548</b>	<b>1,770</b>	<b>1,789</b>

**Professional Services**

Professional Services

22,502	24,040	<b>18,100</b>
<b>22,502</b>	<b>24,040</b>	<b>18,100</b>

Rep/Maint - Auburn Elem  
 Rep/Maint - Rock Creek  
 Rep/Maint - Rec Day Camp  
 Rep/Maint - Skyridge  
 Rep/Maint - Newcastle  
 Rep/Maint - Newcastle

	FY 19-20 Actual	Mid Year	Prelim 20/21
Rep/Maint - Auburn Elem	659	610	<b>1,834</b>
Rep/Maint - Rock Creek	869	890	<b>1,077</b>
Rep/Maint - Rec Day Camp	5,760	1,030	<b>1,605</b>
Rep/Maint - Skyridge	1,788	770	<b>1,691</b>
Rep/Maint - Newcastle	200	300	<b>39</b>
Rep/Maint - Newcastle	233	250	<b>34</b>
	<b>9,509</b>	<b>3,850</b>	<b>6,281</b>

**Salaries/Wages Expenses**

Wages - (Y.Serv) - Manager - Salary  
 Wages - (Y.Serv) - Alta Vista - PT  
 Wages - (Y.Serv) - Alta Vista Maint  
 Wages - (Y.Serv) - Aub Elem - PT  
 Wages - (Y.Serv) - Aub Elem Maint  
 Wages - (Y.Serv) - Rock Creek Maint  
 Wages - (Y.Serv) - Skyridge - PT  
 Wages - (Y.Serv) - Skyridge Maint  
 Wages - (Y.Serv) - Rec Day Camp - PT  
 Wages - (Y.Serv) - Day Camp Maintenananc  
 Wages - (Y.Serv) - Newcastle - PT  
 Wages - (Y.Serv) - Newcastle Maint  
 Wages - (Y.Serv) - Preschool  
**TOTAL WAGES**

	FY 19-20 Actual	Mid Year	Prelim 20/21
Wages - (Y.Serv) - Manager - Salary	73,295	73,340	<b>82,763</b>
Wages - (Y.Serv) - Alta Vista - PT	48,314	45,490	<b>55,092</b>
Wages - (Y.Serv) - Alta Vista Maint	13	0	<b>340</b>
Wages - (Y.Serv) - Aub Elem - PT	84,968	82,020	<b>92,215</b>
Wages - (Y.Serv) - Aub Elem Maint	223	220	<b>340</b>
Wages - (Y.Serv) - Rock Creek Maint	718	690	<b>360</b>
Wages - (Y.Serv) - Skyridge - PT	75,299	69,820	<b>74,557</b>
Wages - (Y.Serv) - Skyridge Maint	740	110	<b>380</b>
Wages - (Y.Serv) - Rec Day Camp - PT	121,234	120,960	<b>129,534</b>
Wages - (Y.Serv) - Day Camp Maintenananc	6,488	110	<b>410</b>
Wages - (Y.Serv) - Newcastle - PT	85,902	80,510	<b>95,624</b>
Wages - (Y.Serv) - Newcastle Maint	87	0	<b>370</b>
Wages - (Y.Serv) - Preschool	42,557	44,600	<b>40,941</b>
<b>TOTAL WAGES</b>	<b>539,838</b>	<b>517,870</b>	<b>572,926</b>
			<b>572,926</b>

**Benefits & Payroll Costs**

ER Taxes (SS/MC/SUTA/ETT)  
 Employment Exp- Y.S.  
 Fingerprinting Exp - Y.S.

ER Taxes (SS/MC/SUTA/ETT)	45,315	44,900	<b>49,504</b>
Employment Exp- Y.S.	1,100	1,250	<b>1,071</b>
Fingerprinting Exp - Y.S.	978	970	<b>1,099</b>

Youth Services

Benefits Expense - Y.S.	31,682	33,990	<b>38,765</b>
Employer Retirement Exp. YS	47,620	46,530	<b>57,352</b>
Worker's Compensation - Y.S.	12,116	12,298	<b>12,688</b>
<b>TOTAL BENEFITS</b>	<b>138,811</b>	<b>139,938</b>	<b>160,479</b>
<b>Total Salaries &amp; Benefits</b>	<b>678,649</b>	<b>657,808</b>	<b>733,405</b>

**Prelim**

	FY 19-20 Actual	Mid Year	<b>20/21</b>
<b>Fixed Assets- Equipment</b>			
Fixed Asset Purchases	0	0	<b>14,800</b>
Fixed Asset Purchases (computer)	1,830	2,400	<b>0</b>
	<b>1,830</b>	<b>2,400</b>	<b>14,800</b>
		0	

<b>Capital Improvement</b>	0	0	<b>0</b>
----------------------------	---	---	----------

<b>Total Expenditures</b>	<b>758,861</b>	<b>738,934</b>	<b>822,202</b>
<b>Total Revenues</b>	<b>819,902</b>	<b>807,490</b>	<b>861,191</b>
<b>Total Expenditures</b>	<b>758,861</b>	<b>738,934</b>	<b>822,202</b>
<b>Contingency Reserve (1% of expense)</b>	<b>0</b>	<b>0</b>	<b>0</b>
<b>Net Gain (Loss)</b>	<b>61,041</b>	<b>68,556</b>	<b>38,988</b>

Youth Services

## Facilities & Grounds 20-21 Budget

Revenues	FY 20-21 Budget
Rents and Concessions	Budget
Fee Waivers- Public	(17,376)
Fee Waivers-CVCC Public	(1,160)
Fee Waiver Offset	18,535
Blue Bird Room - CVCC	2,041
Stella Irving - Rec	584
Lakeside - Reg	15,640
Sierra Room Rental- CVCC	8,165
Sunset Room Rental- CVCC	3,140
Canyon View Room Rental-CVCC	4,780
Foothills Room Rental- CVCC	10,168
Oak Room Rental-CVCC	0
American River Room	5,767
Conference Room Rentals	94
Board Room Rental - CVCC	0
Conference Modular - Overlook	10,231
Gazebo - Rec	158
Gym - Rec	1,950
Gym - Reg	6,795
Tutor Totter Lease Agreement	6,791
Kitchen - Rec	110
Kitchen - Reg	0
Kitchen-CVCC	842
Picnic Area - Rec	9,907
Picnic Area - Reg	2,682
Picnic Area - Ashford	1,453
Picnic Area - Meadow Vista	4,148
Field - Recreation	2,816
Field A - Reg	134
Field - Softball MV	2,536
Field - Christian Valley	2,029
Field Soccer/Baseball-Winchester	4,670
Field "Beggs" - Rec	5,970
Field B - Reg	2,194
Field "James" - Rec	12,260
Field "Chana" - Reg	4,447
Bocce Ball Field Rental	122
Field Soccer - Reg	1,820
Field Soccer A- MV	1,952

F&G



Field Soccer A- Railhead	6,133
Field Placer Hills	1,766
Field Soccer B- MV	0
Field Soccer B- Railhead	6,314
Field "Pee Wee Soccer" Rental - MV	0
Field Lining Revenue - Rec	0
Field Lining Revenue - Reg	168
Misc Rents & Concessions	1,674
Misc Rents & Concessions - Bureau	936
Custodial Fees	23,521
Custodial Fees- Bureau	378
MV cust fee	46
Set up and Take Down Fees	3,068
MV alcohol fee	105
<b>TOTAL RENTS &amp; CONCESSIONS</b>	<b>180,504</b>

**Miscellaneous Revenues**

MV comm ctr rental	210
Sales of an Asset	0
Recycling Revenue	0
Alcohol permit	3,912
Misc Income - F & G	245
<b>Total Misc Revenue</b>	<b>4,367</b>

FY 20-21  
Budget

F&G

**Grants & Donations**

Budget

In-Kind Donations	0
Donations F&G	30,000
Pump trac donations	120,000
<b>TOTAL GRANTS &amp; DONATIONS</b>	<b>150,000</b>

Interest Revenue - City Trust	6,937
<b>TOTAL Interest Income</b>	<b>6,937</b>

**Project Revenue - Government**

County Mitigation	0
City Mitigation Revenue	10,000
<b>Total Project Revenue - Gov</b>	<b>10,000</b>

**Other Financing Sources**

Transfers from Future Capital Constr.	330,000
Transfers from Equipment Reserv	86,100
Transfers from ADA Reserv	5,000
Transfers from City Mitigation	150,000



**Total Other Financing Sources** **571,100**

**Taxes & Government Revenue**

Atwood III Tax Revenue	27,792
<b>Total Taxes &amp; Gov't Revenue</b>	<b>27,792</b>

**TOTAL REVENUES** **950,700**

**Expenditures**

FY 20-21  
Budget

**Operations & Supplies**

Budget

Telephone - F & G	16,735
Office Supplies - F & G	5,406
Duplication Cost - F & G	0
Gas/Mileage Expense - Fac & Gr..	38,110
Membership & Dues - F & G	625
Staff Appreciation - F & G	558
Staff Development - F & G	5,362
Uniform Exp	789
Small Tools and Equipment-Rec Park	1,462
Small Tools and Equipment-Reg Park	5,113
Small Tools and Equipment-MV Park	852
Small Tools and Equipment-CVCC Fac	2,026
Field Marking Expense	957
Safety Supplies - F & G	9,310
Restroom Supplies - Rec Park	2,033
Restroom Supplies - Reg. Park	1,613
Restroom Supplies - Ashford	981
Restroom Supplies - M.V. Park	1,140
Restroom Supplies - Railhead Park	1,026
Restroom Supplies - Overlook Park	1,112
Restroom Supplies - Placer Hills Park	527
Restroom Supplies - Winchester Park	61
Restroom Supplies - Rec. Comm Ctr	2,917
Restroom Supplies - Reg. Comm. Ctr	2,428
Restroom Supplies - CVCC	3,978
Sanitation - Rec Toilet	0
Sanitation- Regional Park- Port. Toilet	5,731
Sanitation- CV - Port. Toilet	0
Sanitation- Winchester Park- Port. Toilet	5,244
Sanitation- Rec Park ADA Portab	4,428
Sanitation - Reg ADA Toilets	4,438
Rec Park - Debris Box	9,483

9  
P  
F

Sanitation- Regional Park - Debris	7,236
Sanitation- MV Park- Debris	4,987
Sanitation- CVCC - Debris	4,178
<b>TOTAL OPERATIONS &amp; SUPPLIES</b>	<b>150,847</b>

FY 20-21  
Budget

Budget

Lights- Rec Pk Beggs Field (LL)	3,237
Lighting Reimbursements - Beggs Fld.	(2,636)
Lights- Rec Park James Field (LL)	3,709
Lighting Reimbursements - James Fld.	(5,718)
Lights- Recreation Field (LL)	631
Lighting Reimbursements - Rec Fld.	(1,016)
Gas/Electric - Rec Comm Ctr	7,960
Gas/Electric - Reg Comm Ctr	15,038
Gas/Elec. - Chr Vly Comm Ctr	788
Electric Reimbursements - Chr Vly CC	(756)
Gas/Electric - CVCC	26,253
Gas/Electric - Recreation Park	8,996
Lighting Reimb - Rec Park	0
Gas/Electric - Reg Park	19,144
Lighting Reimbursements - Reg Park	(4,424)
Gas/Electric - Ashford Park	2,389
Gas/Elec. - MV Park	5,300
Electric - Railhead	2,825
Lighting Reimbursements - Railhead	(1,119)
Gas/Electric - Overlook Park	0
Gas/Electric- Winchester Park	795
Water - Rec Comm Ctr	3,424
Water - Reg Comm Ctr	2,523
Water - Chr Vly Comm Ctr	1,659
Water - CVCC	4,212
Water - Recreation Park	4,859
Water - Regional Park	8,155
Water - Ashford Park	4,475
Water - MV Park	17,155
Water - Chr Vly Park	3,913
Water - Railhead Park	4,284
Water - CVCC (Park)	2,423
Water - Overlook	5,742
Water - Placer Hills Park	5,522
Water - Winchester Park	0
Water - Atwood	4,887

F d G

Water - Chana Field	6,360
Sanitation - Rec Park (Sewer)	9,624
Sanitation - Regional Park - (Sewer)	15,556
Sanitation - Ashford Park (Sewer)	1,691
Sanitation - Railhead (Sewer)	179
Sanitation - Overlook (Sewer)	758
Sanitation - CVCC (Sewer)	10,495

**TOTAL UTILITIES** 199,293  
 FY 20-21  
 Budget  
**Professional Services** Budget

Professional Services	12,397
Professional Services - Bureau	1,117
Professional Services - Atwood III	6,607
Atwood - County Admin Coll Fee	250
<b>Total Professional Services</b>	<b>20,371</b>

**Building & Grounds Maintenance**

Equipment Rental - F & G	8,246
District Vehicles Maint - F & G	13,322
Irrigation supplies	0
Maint - Recreation Field	2,655
Maint - CV Baseball Field	8,430
Maint - James Field	9,562
Maint - Beggs Field	19,888
Maint & Repairs - Equipment	26,168
Maint- Rec Park - Irrigation Pump	0
Maint- Reg Park - Irrigation Pump	0
Maint- Ashford Park - Irrigation Pump	4,738
Maint- MV Park - Irrigation Pump	0
Maint - Winchester - Irrigation Pump	4,738
Maint - M.V. Soccer Field	1,142
Maint- Winchester Field	1,150
Maint - M.V. Tennis Courts	0
Maint - Recreation Park	19,837
Maint - Regional Park	69,982
Maint - Ashford Park	14,357
Maint - Meadow Vista Park	16,547
Maint - Christian Valley Park	10,317
Maint - Railhead Park	8,599
Maint- CVCC Park	6,977
Maint - Overlook Park	9,146
Maint - Placer Hills Park	1,055
Maint - Pocket Parks	279
Maint - Mt. Vernon Park	3,093

F & G

Maint - Winchester Park	2,569
Maint - Atwood III	11,416
Maint-Shockley	19,430
Maint-Ashley dog park	13,107
Maint - Recreation Comm Ctr	26,463
Maint - Regional Comm Ctr	7,495
Maint - Christian Valley Comm Ctr	3,327
Maint - CVCC	18,678
Maint - Overlook Modular	1,047
Maint - Regional Tennis Courts	1,378
Maint - MV Soccer A Field	449
Maint - RH Soccer A Field	6,540
Maint - PH Soccer Field	268
Maint - Regional Field Soccer	446
Maint - MV PeeWee Soccer	166
Maint - RH Soccer B Field	5,841
Maint - Regional Field A	14,772
Maint - MV Softball Field	316
Maint - Regional Field B	4,649
Maint - Regional Field C	2,975
Tree Maint Rec Park	12,000
Tree Maint Reg	0
Tree Maint Ashford	0
Tree Maint MV park	0
Tree Maint PH Park	0
Tree Maint Railhead Park	0
Tree Maint Pocket Parks	0
Vandalism Repairs Exp.	4,672

**TOTAL MAINTENANCE** **418,231**  
**FY 20-21**  
**Budget**

**Salaries/Wages Expenses**

**Budget**

Wages - Fac Attend - Rec Park	59,310
Wages - Fac Attend - CVCC	21,995
Wages - Fac Attend - Reg Park	25,138
Wages - Management	149,591
Wages - Rec Park	324,776
Wages - Reg Park	191,824
Wages - Ashford Park	43,218
Wages - Meadow Vista Park	60,989
Wages - CV Comm Ctr	11,640
Wages - Railhead Park	20,657
Wages - CVCC	14,748
Wages - Overlook Park	19,217
Wages - Placer Hills Park	19,630

0  
 11

Wages - Pocket Parks	8,418
Wages- Mt. Vernon Park	627
Wages - Winchester Park	5,696
Wages - Atwood	8,028
Wages - Shockley	1,862
Wages - Other Projects	0
Wages - Special Events	6,109
Wages - Uniform Allowance	16,250
	<b>1,009,723</b>

FY 20-21  
Budget  
Budget

ER -Taxes - F & G (7.65%)	81,131
Employment Expense - F & G	1,864
Fingerprinting Exp. - F & G	285
Benefits Expense - F & G	209,915
Employer Retirement Exp.	121,194
Worker's Comp.	88,522
<b>TOTAL BENEFITS &amp; PAYROLL COSTS</b>	<b>502,912</b>

**TOTAL SALARIES, BENEFITS** **1,512,634**

**Fixed Assets**

Fixed Asset Purchases - F&G	86,100
Fixed Asset Purchases - Bureau	0
Computer Purchases	0
<b>TOTAL FIXED ASSETS</b>	<b>86,100</b>

**Lease Purchase Princ/Interest**

	0
	0
<b>TOTAL LEASE COSTS</b>	<b>0</b>

**Rent**

Bureau of Reclamation Lease	0
Rec Park Lease UPPR	2,000
<b>TOTAL RENT</b>	<b>2,000</b>

FY 20-21  
Budget  
Budget

Bike Park Construction	200,000
Placer Hills Parking Lot	30,000
Overlook ADA RR upgrades	35,000

FC  
H

REG - 24 Acres Planning/CEQA	190,000
Locker Room Floor	25,000
REC - James Field Renovation	20,000
Wheelchair Swing	60,000
Rec Fencing (Sipes/James)	9,500
Rec Front Playground	120,000
Rec Playground POT	30,000
CVCC ADA Door	5,000
<b>Total Capital Improvements (Funded)</b>	<b>724,500</b>

**TOTAL CAP IMPROVEMENT** 724,500

**TOTAL EXPENDITURES** 3,113,975

Total Revenues	950,700
Total Expenditures	3,113,975
Contingency Fund 1% of total ex	0
Restricted reserve for equip repl	0
<b>Net Gain (Loss)</b>	<b><u>(2,163,275)</u></b>

FCG

## **Item 8.5 Cover Sheet – Resolution #2020-06 Purchase of a new John Deere 1570 Front Mower**

Auburn Area Recreation and Park District Board of Directors meeting February 27, 2020.

### **The issue**

Shall the Auburn Area Recreation and Park District (ARD) approve and adopt Resolution #2020-06, authorizing the District Administrator to purchase a new John Deere 1570 Front Mower for \$30,045.24?

### **Background**

ARD needs to purchase a new front mower. This mower will replace the much needed 1994 Jacobsen Turfcut T422D, which services 10 different parks for our mowing crew. A new mower is scheduled for purchase on the 2019-2020 Obsolescence List. Staff has researched three different mowers and recommends purchasing the John Deere 1570 Front Mower. The John Deere 1570 is a wide-area 1600 Turbo Series III, with a diesel engine has high quality features to minimize operating cost. The hydrostatic transmission and transaxle are heavy-duty to maximize uptime. The two-function mechanical real-wheel drive makes for optimum use of the four-wheel drive feature. Serviceability is designed-in to reduce maintenance cost and increase uptime.

Staff has created a spreadsheet comparing the three mowers. It should be noted that only two of the mowers were able to be demoed, but the John Deere was recommended by staff as the mower liked the most by staff. The Turfstar Western 3300 quote, (unable to demo) came in just under the price of the John Deere.

All purchases over \$25,000 must be approved by the Board of Directors. District policy states the following (in part):

#### **II. Purchasing**

- A. **Purchasing Agent(s)**. The District Administrator or a designated manager shall serve as the purchasing agent for the District, and will be vested with the authority to purchase supplies, materials, services and equipment within annual budgetary authority limits as follows:

#### **Purchasing Agent:**

District Administrator: \$25,000/purchase

### **Recommendation**

Staff recommends that the Board of Directors adopt Resolution #2020-06, authorizing the District Administrator to purchase a John Deere 1570 Front Mower for \$30,045.24.

### **Fiscal Impact**

\$30,045.24. The funding for this purchase will come from the Equipment Replacement Reserve account. There is currently \$676,236.72 in this reserve.



**Attachments**

**Resolution 2020-06**

**Mower Comparisons**

**Photos/Information on each mower**

RESOLUTION NUMBER 2020-06

A RESOLUTION OF THE GOVERNING BOARD OF DIRECTORS OF THE  
AUBURN AREA RECREATION AND PARK DISTRICT APPROVING THE  
PURCHASE OF A JOHN DEERE 1570 FRONT MOWER

WHEREAS the Auburn Area Recreation & Park District Board of Directors has created an Equipment Reserve Fund to assist with the purchase of new and replacement equipment, and;

WHEREAS, the Auburn Area Recreation and Park District Board of Directors has also created an Obsolescence List to help inform decisions on equipment replacement, and;

WHEREAS, the Auburn Area Recreation and Park District Board of Directors approved the FY 2019/2020 budget and the updated Obsolescence List, both of which approved the purchase of a new mower to replace the 1994 Jacobsen Turfcut, and;

WHEREAS, staff has performed due diligence and research to determine the reel mower that will best fit the needs of the District, and;

WHEREAS, staff has determined that the John Deere 1570 Front Mower is the best mower for the District, THEREFORE;

The Auburn Area Recreation and Park District Board of Directors resolve the following:

That the Auburn Area Recreation and Park District authorizes the District Administrator to purchase a new John Deere 1570 Front Mower for \$30,045.24.

APPROVED, PASSED, AND ADOPTED ON FEBRUARY 27, 2020 by the following roll call vote:

Ayes:

Noes:

Absent:

Abstain:

---

Scott R. Holbrook  
Chairman of the Governing Board

ATTEST:

---

Clerk to the Governing Board

## Front Mower Comparison

Vendor	Engine Type	Rated Horsepower	Ground Speed	Wth. of Cut	Ht. of Cut	Price	Warranty	Staff's Recommendation
Garton Tractor F3990 (Kubota)	Diesel	36.9 at 3,000 RPM	up to 12 mph	72 in.	1-5 in.	\$26,692.85	2 year limited	Demoed. Staff's least favorite.
John Deere 1570	Diesel	37.4 hp at 3,000 RPM	up to 12 mph	72 in.	1-6 in.	\$30,045.24	2 year limited	Demoed. Staff's pick
TurfStar Western 3300 (Toro)	Diesel	37.4 hp at 3,000 RPM	up to 15 mph	72 in.	1-6 in.	\$29,560.27	2 year limited	Unable to demo.

Applicable on all four options:

Engine is in back of the operator for a cooler ride

Operator is not sitting on top of a hot transmission

Cutting units are out front and to either side for greater visibility so the operator doesn't need to turn around





# Front Mowers

1500 Series TerrainCut™

# Wide-Area Mowers

1600 Turbo Series III



JOHN DEERE

Every season is our season.





# Groundsmaster® 3200/3300 Series 60"-72" (1.5m-1.8m) Cutting Width

NEW



Toro

Request a Demo (<https://comm.toro.com/CustomerInquiry?rtid=Sales%20Call%20%2F%20Product%20Demo&cid=Gr>)

**SECTION: 8.0**

**ITEM: 8.6 CALIFORNIA SPECIAL DISTRICTS ASSOCIATION (CSDA) BOARD OF DIRECTORS CALL FOR NOMINATIONS SEAT C, RESOLUTION NUMBER 2020-07, A RESOLUTION OF THE GOVERNING BOARD OF DIRECTORS OF THE AUBURN AREA RECREATION AND PARK DISTRICT SUPPORTING THE NOMINATION OF SCOTT R. HOLBROOK FOR THE CALIFORNIA SPECIAL DISTRICTS ASSOCIATION BOARD OF DIRECTORS, SEAT C**

**INFORMATION: SEE ATTACHED INFORMATION**

**STAFF**

**RECOMMENDATION: BOARD OF DIRECTORS REVIEW & ADOPT RESOLUTION NUMBER 2020-07**

**FISCAL IMPACT: NONE**



RESOLUTION NUMBER 2020 - 07

A RESOLUTION OF THE GOVERNING BOARD OF DIRECTORS OF THE  
AUBURN AREA RECREATION AND PARK DISTRICT SUPPORTING THE  
NOMINATION OF SCOTT R. HOLBROOK FOR THE CALIFORNIA SPECIAL  
DISTRICTS ASSOCIATION BOARD OF DIRECTORS, SEAT C

WHEREAS, the Auburn Area Recreation and Park District (ARD) has been in existence from 1948, and

WHEREAS, ARD is a member of the California Special Districts Association (CSDA) and;

WHEREAS, the ARD Board of Directors has reviewed the request from CSDA to nominate an individual for the CSDA Board of Directors, and

WHEREAS, the ARD Board of Directors has nominated Scott R. Holbrook for the CSDA Board, therefore

The Auburn Area Recreation and Park District Board of Directors does hereby resolve the following:

That Scott R. Holbrook of the Auburn Area Recreation and Park District Board of Directors be nominated for the CSDA Board of Directors, Seat C.

APPROVED, PASSED, AND ADOPTED ON February 27, 2020 by the following roll call vote:

Ayes:

Noes:

Absent:

Abstain:

---

Scott R. Holbrook  
Chairman of the Governing Board

ATTEST:

---

Clerk to the Governing Board



**California Special  
Districts Association**  
*Districts Stronger Together*

**DATE:** January 27, 2020  
**TO:** CSDA Voting Member Presidents and General Managers  
**FROM:** CSDA Elections and Bylaws Committee  
**SUBJECT:** **CSDA BOARD OF DIRECTORS CALL FOR NOMINATIONS  
SEAT C**

---

The Elections and Bylaws Committee is looking for Independent Special District Board Members or their General Managers who are interested in leading the direction of the California Special Districts Association for the 2021 - 2023 term.

The leadership of CSDA is elected from its six geographical networks. Each of the six networks has three seats on the Board with staggered 3-year terms. Candidates must be affiliated with an independent special district that is a CSDA Regular Member in good standing and located within the geographic network that they seek to represent. (See attached CSDA Network Map)

The CSDA Board of Directors is the governing body responsible for all policy decisions related to CSDA's member services, legislative advocacy, education and resources. The Board of Directors is crucial to the operation of the Association and to the representation of the common interests of all California's special districts before the Legislature and the State Administration. Serving on the Board requires one's interest in the issues confronting special districts statewide.

**Commitment and Expectations:**

- Attend all Board meetings, usually 4-5 meetings annually, at the CSDA office in Sacramento.
- Participate on at least one committee, meets 3-5 times a year at the CSDA office in Sacramento.  
*(CSDA reimburses Directors for their related expenses for Board and committee meetings as outlined in Board policy).*
- Attend, at minimum, the following CSDA annual events: Special Districts Legislative Days - held in the spring, and the CSDA Annual Conference - held in the fall.  
*(CSDA does **not** reimburse expenses for the two conferences even if a Board or committee meeting is held in conjunction with the event, however does comp registration for the two events)*
- Complete all four modules of CSDA's Special District Leadership Academy within 2 years of being elected.  
*(CSDA does **not** reimburse expenses for the Academy classes even if a Board or committee meeting is held in conjunction with the event).*

- Complete Annual Chief Executive Officer Evaluation.

**Nomination Procedures:** Any Regular Member in good standing is eligible to nominate one person, a board member or managerial employee (as defined by that district's Board of Directors), for election to the CSDA Board of Directors. **A copy of the member district's resolution or minute action and Candidate Information Sheet must accompany the nomination. The deadline for receiving nominations is March 26, 2020. Nominations and supporting documentation may be mailed, faxed, or emailed.**

Mail: 1112 I Street, Suite 200, Sacramento, CA 95814  
 Fax: 916.442.7889  
 E-mail: [amberp@csda.net](mailto:amberp@csda.net)

Once received, nominees will receive a candidate's letter in the mail. The letter will serve as confirmation that CSDA has received the nomination and will also include campaign guidelines.

CSDA will begin electronic voting on May 25, 2020. All votes must be received through the system no later than 5:00 p.m. July 10, 2020. The successful candidates will be notified no later than July 14, 2020. All selected Board Members will be introduced at the Annual Conference in Palm Desert, CA in August 2020.

#### **Expiring Terms**

(See enclosed map for Network breakdown)

**Northern Network** Seat C-Fred Ryness, Director, Burney Water District\*  
**Sierra Network** Seat C-Pete Kampa, GM, Saddle Creek Community Services District\*  
**Bay Area Network** Seat C-Stanley Caldwell, Director, Mt. View Sanitary District\*  
**Central Network** Seat C-Sandi Miller, GM, Selma Cemetery District\*  
**Coastal Network** Seat C-Vincent Ferrante, Director, Moss Landing Harbor District\*  
**Southern Network** Seat C-Arlene Schafer, Director, Costa Mesa Sanitary District\*

(\* = Incumbent is running for re-election)

If you have any questions, please contact Amber Phelen at [amberp@csda.net](mailto:amberp@csda.net).

**AGAIN, THIS YEAR!**

**This year we will be using a web-based online voting system, allowing your district to cast your vote easily and securely. *Electronic Ballots will be emailed to the main contact in your district May 25, 2020. All votes must be received through the system no later than 5:00 p.m. July 10, 2020.***

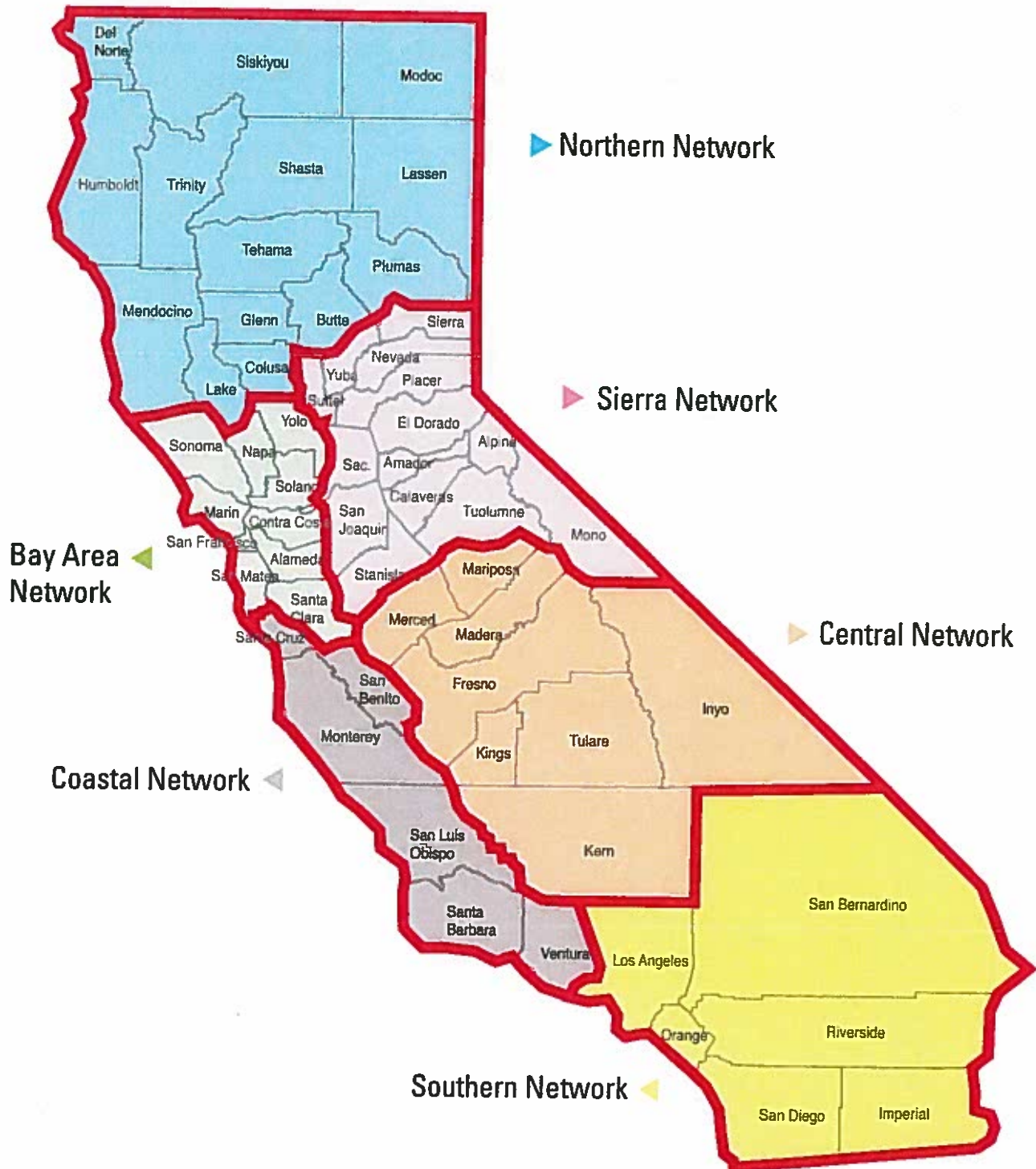
*Districts can opt to cast a paper ballot instead; but you must contact Amber Phelen by e-mail [Amberp@csda.net](mailto:Amberp@csda.net) by **March 26, 2020** in order to ensure that you will receive a paper ballot on time.*

CSDA will mail paper ballots on May 25, 2020 per district request only. ALL ballots must be received by CSDA no later than 5:00 p.m. July 10, 2020.

The successful candidates will be notified no later than July 14, 2020. All selected Board Members will be introduced at the Annual Conference in Palm Desert, CA in August 2020.



California Special Districts Association  
**DISTRICT NETWORKS**





**California Special  
Districts Association**  
*Districts Stronger Together*

## 2021-2023 BOARD OF DIRECTORS NOMINATION FORM

Name of Candidate: \_\_\_\_\_

District: \_\_\_\_\_

Mailing Address: \_\_\_\_\_  
\_\_\_\_\_

Network: \_\_\_\_\_ (see map)

Telephone: \_\_\_\_\_  
(PLEASE BE SURE THE PHONE NUMBER IS ONE WHERE WE CAN REACH THE CANDIDATE DIRECTLY)

Fax: \_\_\_\_\_

E-mail: \_\_\_\_\_

Nominated by (optional): \_\_\_\_\_

**Return this form and a Board resolution/minute action supporting the candidate  
and Candidate Information Sheet by mail, or email to:**

CSDA  
Attn: Amber Phelen  
1112 I Street, Suite 200  
Sacramento, CA 95814  
(877) 924-2732 (916) 442-7889 fax  
amberp@csda.net

***DEADLINE FOR RECEIVING NOMINATIONS – March 26, 2020***



**2021-2023 CSDA BOARD CANDIDATE INFORMATION SHEET**

The following information **MUST** accompany your nomination form and Resolution/minute order:

Name: \_\_\_\_\_

District/Company: \_\_\_\_\_

Title: \_\_\_\_\_

Elected/Appointed/Staff: \_\_\_\_\_

Length of Service with District: \_\_\_\_\_

1. Do you have current involvement with CSDA (such as committees, events, workshops, conferences, Governance Academy, etc.):

\_\_\_\_\_  
\_\_\_\_\_

2. Have you ever been associated with any other state-wide associations (CSAC, ACWA, League, etc.):

\_\_\_\_\_  
\_\_\_\_\_

3. List local government involvement (such as LAFCo, Association of Governments, etc.):

\_\_\_\_\_  
\_\_\_\_\_

4. List civic organization involvement:

\_\_\_\_\_  
\_\_\_\_\_

**\*\*Candidate Statement** – Although it is not required, each candidate is requested to submit a candidate statement of no more than 300 words in length. **Any statements received in the CSDA office after March 26, 2020 will not be included with the ballot.**



**SECTION 9.0**

**ITEMS FOR DISCUSSION AND INFORMATIONAL  
ITEMS**

**DESCRIPTION:**

1. Discussion of Fiscal Year 2020/2021 Project List and Five-Year Plan Update – see attachments.
2. Banning the use of Plastics at ARD – see attachment.
3. County Mitigation Fund, current balance \$487,738 – no attachment.

## Discussion Item 9.1 Cover sheet – FY 2020/2021 Project List and Five-Year Plan Update

Auburn Area Recreation and Park District Acquisition and Development Committee January, 2020; February, 2020; Board of Directors Meeting, February, 2020

### The Issue

Shall the Auburn Area Recreation and Park District (ARD) direct staff to begin preliminary work and provide appropriate environmental analysis of the projects on the proposed FY 20/21 Project List, and approve the Five-Year Plan Update?

### Background

ARD staff provides a proposed Project List for each Fiscal Year. This Project List is based off of projects incorporated in the Five-Year Project List as well as any new needs proposed by the community, staff and Board. A description of the projects on the FY 20/21 Project List is attached.

The Five-Year Project List is comprised of those projects deemed to be of the highest priority and reflects the District's goal to address needed existing infrastructure upgrades, bring new features into the existing park system and complete potential land acquisition and new park development.

Items of note from the Five-Year Plan:

All sheets: **Yellow highlights** = new projects (since the last Board approved Project List, October 2019)  
**Peach highlights** = projects carried over from the previous year

#### FY 20/21

- The Bermuda grass outfield for James Field has been added. Bermuda was supposed to be used during the renovation, however delays led to hydroseeding with rye grass.
- A renovation of Recreation Field's infield has been added.
- It has been suggested that ARD apply for County Mitigation funds to install the ADA swing at Recreation Park. The suggested change is to apply \$25,000 of County Mitigation to help subsidize the community fund raising.
- The Path of Travel work at Placer Hills pool has been removed (project deemed unneeded), however repair to the parking lot has been added.
- Interpretive signage (2 signs) have been added to Overlook Park.
- An ADA automatic door opener has been added for CVCC.
- The planning and CEQA work for the 24 acres was pushed out to FY 20/21. The RFQ is out, and a contract for the work will be awarded in FY19/20, however invoicing will not happen until after 4/1/20.

#### FY 21/22

- The playground (and associated path of travel) at the north end of Recreation Park is one of our oldest playgrounds and is scheduled for replacement in FY 20/21, however it is holding up well. Staff suggests pushing back a year to FY 21/22.
- Levee repairs for the Ashford Pond (also access road) have been added.
- Canal repair for canal/waterway feeding the Regional Park pond has been added.

### Recommendation for the Board of Directors

The A&D Committee sent this item to the Board for review and discussion. The Board should provide feedback and send back to the A&D Committee for further refinement, if any.

**Fiscal Impact**

The fiscal impact of the FY 20/21 Project List is indicated on that document.  
The fiscal impact of the Five-Year Project List is indicated on those documents.

**Attachments**

Five Year Project List, including FY 20/21 Project List

Auburn Recreation District Five Year Project List

Yellow = new project on list

Peach = project carried over from previous year

# Project List

2020/2021

PROJECT	Est. Cost	Spent from General Funds or Grants in Prior Year(s)	Gen. Fund	ADA	Reserve	Cnty. Mit.	City Mit.	Grants	Mt. Vernon proceeds
Estimated balance									
				30,032	562,873	549,738	233,161	See Note	400,000
<b>Recreation Park</b>									
Rec Field infield renovation	20,000				20,000				
Wheelchair Swing	60,000					25,000	30,000	5,000	
Locker room Floor	25,000				25,000				
Stella Dance Floor (Removed)	0								
James Bermuda Outfield	20,000		20,000						
<b>Regional Park</b>									
Planning/CEQA	190,000				190,000				
<b>Placer Hills Park</b>									
Parking Lot	30,000		30,000						
Path of Travel (Removed)	0								
<b>Overlook Park</b>									
Restroom ADA upgrades	35,000				35,000				
Interpretive signage (2 x \$5k)	10,000				10,000				
<b>CVCC</b>									
Bike Park Phase II	200,000				80,000			120,000	
ADA Auto Door	5,000			5,000					
<b>TOTAL</b>	<b>595,000</b>	<b>0</b>	<b>50,000</b>	<b>5,000</b>	<b>360,000</b>	<b>25,000</b>	<b>30,000</b>	<b>125,000</b>	<b>0</b>
Estimated Balance Remaining									
			25,032	202,873	524,738	203,161	200,000	400,000	

Note: Assumes \$50,000/year in County Mitigation Fees

Note: Assumes \$5000/year in ADA reserve funds

Note: Assumes \$10,000/year in city mitigation

Note: Assumes \$25,000 added to FCC per year

Note: Reserve amount includes Future Capital Const. Reserve + Cell Tower Reserve

Note: Assumes \$50,000/year in Equipment Reserve funds

Note: Assumes \$170,000 from per capita (Prop 68) and \$150,000 from trail grant and additional \$5,000 donations for Wheelchair Swing

# Auburn Recreation District Five Year Project List

Yellow = new project on list  
 Peach = project carried over from previous year

## Project List

2021/2022

Estimated balance

PROJECT	Est. Cost	Spent from General Funds or Grants in Prior Year(s)	Gen. Fund	ADA	Reserve	City Mit.	Grants	Mt. Vernon proceeds
30,032 227,873 574,738 213,161 605,000 400,000								
<i>Recreation Park</i>								
Front Playground	120,000					120,000		
North Playground, new path of travel	30,000					30,000		
<i>Meadow Vista</i>								
Signage	1,200			1,200				
Parking lot reseal/restripe	10,000				10,000			
<i>Ashford Park</i>								
Levee Repairs	20,000				20,000			
<i>Christian Valley Park</i>								
Tutor Totter Roof	45,000		45,000					
<i>Regional Park</i>								
Pond leak Repair	95,000				95,000			
Canal Repair	100,000				100,000			
24 Acre Phase I	1,542,441						603,441	400,000
Signage	1,200		1,200					
<b>TOTAL</b>	<b>1,814,841</b>	<b>0</b>	<b>46,200</b>	<b>1,200</b>	<b>225,000</b>	<b>539,000</b>	<b>603,441</b>	<b>400,000</b>
Estimated Balance Remaining								
			28,832	2,873	35,738	213,161	1,559	0

Note: Assumes \$50,000/year in County Mitigation Fees

Note: Assumes \$5000/year in ADA reserve funds

Note: Assumes \$10,000/year in city mitigation

Note: Assumes \$25,000 added to FCC per year

Note: Reserve amount includes Future Capital Const. Reserve + Cell Tower Reserve

Note: Assumes \$50,000/year in Equipment Reserve funds

Note: Assumes \$400,000 additional grant

# Auburn Recreation District Five Year Project List

Yellow = new project on list

Peach = project carried over from previous year

## 2022/2023

Estimated balance

PROJECT	Est. Cost	Spent from General Funds or Grants in Prior Year(s)	Gen. Fund	ADA	Reserve	Cnty. Mit.	City Mit.	Grants	In Kind
<div style="display: flex; justify-content: space-between; font-weight: bold;"> <span>33,832</span> <span>27,873</span> <span>85,738</span> <span>223,161</span> <span>425,000</span> </div>									
<i>Regional Park</i>									
Tennis/pickleball courts surfaces	160,000								Postponed
Tennis Court Path of Travel	41,500		21,500		20,000				150,000
24 Acre Phase II	425,000							425,000	465,000
Pond mucking	75,000								75,000
Walking pathway extension, Dry Creek end	265,000								265,000
Breezeway Painting	40,000		20,000		20,000				
<i>Meadow Vista Park</i>									
Pond Island renovation	-100,000								
<b>TOTAL</b>	1,096,500	0	20,000	21,500	20,000	20,000	0	425,000	100,000
<b>Estimated Balance Remaining</b>			12,332	7,873	65,738	223,161	0	0	0

Note: Assumes \$50,000/year in County Mitigation Fees

Note: Assumes \$5000/year in ADA reserve funds

Note: Assumes \$10,000/year in city mitigation

Note: Assumes \$25,000 added to FCC per year

Note: Reserve amount includes Future Capital Const. Reserve + Cell Tower Reserve

Note: Assumes \$50,000/year in Equipment Reserve funds

Note: Assumes \$425,000 additional grant

506,500	all projects	20,000	Reserves
20,000	Less: General Fund	466,500	Project Revenue
486,500	Capital Impr Projects	486,500	Funds for Projects

## Auburn Recreation District Five Year Project List

Yellow = new project on list  
 Peach = project carried over from previous year

**2023/2024**

Estimated balance

PROJECT	Est. Cost	Spent from General Funds or Grants in Prior Year(s)	Gen. Fund	ADA	Reserve	Cnty. MIL.	City Mit.	Grants	In Kind
<i>Recreation Park</i>									
Spray park (replace splash pool)	300,000		20,000		25,000	75,000	100,000	80,000	
<b>TOTAL</b>	<b>300,000</b>	<b>0</b>	<b>20,000</b>	<b>0</b>	<b>25,000</b>	<b>75,000</b>	<b>100,000</b>	<b>80,000</b>	<b>0</b>
Estimated Balance Remaining				17,332	7,873	40,738	133,161	0	0

Note: Assumes \$50,000/year in County Mitigation Fees

Note: Assumes \$5000/year in ADA reserve funds

Note: Assumes \$10,000/year in city mitigation

Note: Assumes \$25,000 added to FCC per year

Note: Reserve amount includes Future Capital Const. Reserve + Cell Tower Reserve

Note: Assumes \$50,000/year in Equipment Reserve funds

Note: Assumes \$80,000 additional grant

300,000	all projects	25,000	Reserves
20,000	Less: General Fund	255,000	Project Revenue
280,000	Capital Impr Projects	280,000	Funds for Projects



## **Discussion Item 9.2 Cover sheet – Banning the use of plastics at ARD**

**Auburn Area Recreation and Park District Board of Director's meeting February, 2020**

### **The Issue**

A discussion about banning the use of plastics at the Auburn Area Recreation and Park District. This item was requested by Director Lynch.

### **Background**

ARD currently uses plastics in several ways, including:

#### **Youth Services:**

- Forks, knives and spoons at Discovery Club and Day Camp
- The United Way provides food for the Discovery Club sites. The United Way provides plastic utensils as part of this program
- Some straws are used for crafts

#### **Recreation Services:**

- Vendors at ARD events use plastic utensils and serve some non-alcoholic drinks in plastic bottles
- Beer at ARD events is served in plastic cups

### **Recommendation**

Discuss and provide direction for staff.

### **Fiscal Impact**

Unknown at this time

### **Attachments**

None



Placer High School baseball players stretch on the renovated James Field on Monday.

TRACI NEWELL • AUBURN JOURNAL

## Auburn Recreation District completes field renovations

BY TRACI NEWELL  
OF THE AUBURN JOURNAL

Placer High School baseball players broke in the fresh green grass and newly renovated facilities at James Field on Monday to kick off their season.

The Auburn Recreation District has been renovating the baseball field since August. In addition to

new grass, the field was completely regraded and received a new irrigation system bringing it up to current standards.

Kahl Muscott, director of the Auburn Recreation District, said that while the project had its share of issues during construction the results turned out well and in time for baseball season.

The field, which hasn't been

renovated since the 1990s, received new grass in the infield and the outfield. The previous field had draining and grading issues as well, Muscott said.

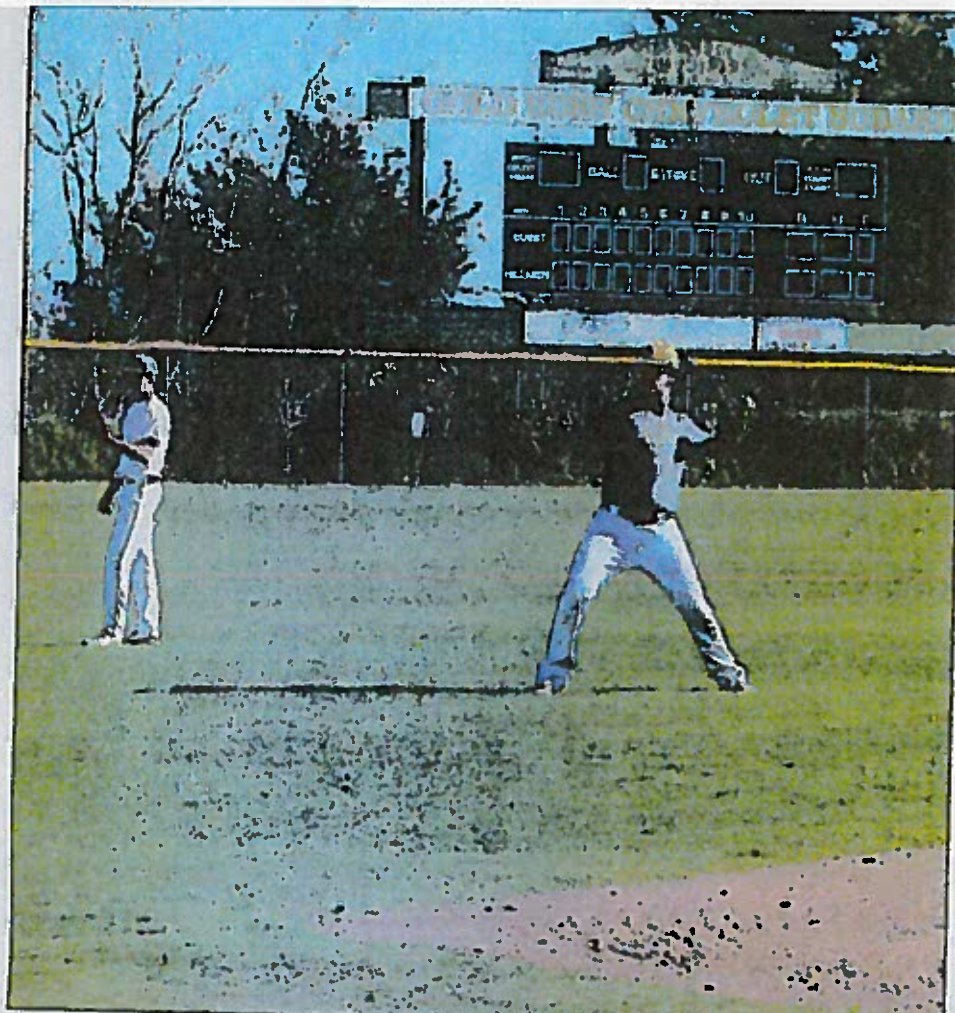
The field gets its fair share of use between the Placer High School baseball team and the Auburn Little League. The Placer High baseball

• SEE BALL PAGE A5

*Auburn Journal*

*2-12-20*





TRACI NEWELL • AUBURN JOURNAL

The Auburn Recreation District recently regraded, added new grass and irrigation to James Field at Recreation Park.

## **BALL:**

continued from A1

Boosters is adding to the renovations and has funded a new scoreboard — which will feature a new slate of sponsors for the team.

The Auburn Recreation District project was being

planned for more than a year, Muscott said, and was funded from the district's reserve and the city of Auburn's mitigation fund.

The Placer High Hillmen baseball team were the first group to test out the new field during their first practice Monday.

"It gives them a lot more

pride," said coach Dave Thompson. "It gives them more responsibility as well."

Thompson said he was also happy the new facilities had a better transition from dirt to grass. The previous field had an "obvious crown" which resulted in balls traveling all over the place.

# Gold Country Media

SUBSCRIBE



The Placer County Association of REALTORS poses with the bench it donated at Regional Park in Auburn. Front row, left to right: Danelle Workman, Colleen Conley, Lawanna Taylor, Liz Anderson, Cheryl Foley, Angela Alsaleem, Susan Kelly. Back row, left to right: Rick Siegel, Sachiko Mita Borman, Angela Dunbar, Karen Calvert, John McCann, Dan Starelli, April Noessel, Mark Stempel, Tamara Salas, Bruce Cosgrove, Maureen Buck, Bill Evans, Teri Tait Wilson, Ray Anderson, Melissa Draper, Kathy Pendergraft.

## PCAR dedicates new bench at Regional Park in Auburn



Journal staff Feb 14, 2020 5:15 AM

The Placer County Association of REALTORS has donated a new park bench for the community to enjoy at the children's play structure at Regional Park in Auburn. The Auburn Marketing Committee of PCAR gathered Jan. 23

# Gold Country Media

SUBSCRIBE



The Placer County Association of REALTORS poses with the bench it donated at Regional Park in Auburn. Front row, left to right: Danelle Workman, Colleen Conley, Lawanna Taylor, Liz Andersen, Cheryl Foley, Angela Alsaleem, Susan Kelly. Back row, left to right: Rick Siegel, Sachiko Mita Borman, Angela Dunbar, Karen Calvert, John McCann, Dan Starelli, April Noessel, Mark Stempel, Tamara Salas, Bruce Cosgrove, Maureen Buck, Bill Evans, Teri Tait Wilson, Ray Anderson, Melissa Draper, Kathy Pendergraft.

## COMMENTS (0)

You must be logged in or to post comments on articles & stories!

[Sign In](#)

[Sign Up](#)



## TOP STORIES

**Longtime swim coach, outdoor lover Huerta dies at 58**

**Sierra baseball on explosive win streak**