

**AUBURN AREA RECREATION AND PARK DISTRICT
BOARD OF DIRECTORS
AGENDA
SPECIAL MEETING OF THE BOARD OF DIRECTORS**

6:00 PM

**THURSDAY, MAY 10, 2018
CANYON VIEW COMMUNITY CENTER, BOARD ROOM
471 MAIDU DRIVE
AUBURN, CA**

Materials related to an item on this Agenda submitted to the District after distribution of the agenda packet are available for public inspection in the District's Office at 471 Maidu Drive, Auburn, CA 95603 during normal business hours. In compliance with the Americans with Disabilities Act, if you need assistance to participate in this meeting, please contact the District Clerk at (530) 537-2187. Notification 48 hours prior to the meeting will enable the District to make reasonable arrangements to ensure accessibility to this meeting.

1.0 CALL TO ORDER

FLAG SALUTE – PLEDGE TO THE FLAG

The Board of Directors of the Auburn Area Recreation and Park District welcomes you to its meetings. Regular meetings are scheduled at 6 p.m. the last Thursday of each month. Your attendance and interest is encouraged and appreciated. Special accommodations may be made upon request to the District Administrator 72 hours in advance of the meeting.

Roll Call

Gray ____ Ainsleigh ____ Lynch ____ Ferris ____ Holbrook ____

____ 1.0 Decommissioning Surplus Equipment

Shall the Auburn Area Recreation and Park District (ARD) decommission a tractor and lawn mower that have become unsuitable for District use?

Motion by _____ Second by _____ to _____

Gray ____ Ainsleigh ____ Lynch ____ Ferris ____ Holbrook ____

Roll Call Vote

_____ 2.0 **Resolution Number 2018-09: Purchase of New Kioti Tractor and a New Toro TriDeck Mower**

Shall the Auburn Area Recreation and Park District (ARD) Board of Directors approve and adopt Resolution Number 2018-09, Authorizing the District Administrator to Purchase a New Kioti Tractor and a New Toro Mower?

Motion by _____ Second by _____ to _____

Gray _____ Ainsleigh _____ Lynch _____ Ferris _____ Holbrook _____

Roll Call Vote

ADJOURNMENT

AUBURN AREA RECREATION AND PARK DISTRICT
This agenda is hereby certified to have been posted as follows:

5-9-18
Date

1:40 P.M.
Time

P. Larain
Clerk to the Board

Item 1. Cover sheet – Decommissioning Surplus Equipment

Auburn Area Recreation and Park District Special Board Meeting May 10, 2018

The Issue

Shall the Auburn Area Recreation and Park District (ARD) decommission a tractor and lawn mower that have become unsuitable for District use?

Background

ARD District Policy, Section III (c) states the following:

- C. **Surplus.** District employees shall submit, at such times and in such form as prescribed by the purchasing agent, reports showing supplies, materials and equipment which are no longer used or have become obsolete or worn out. The purchasing agent has the authority, with the approval of the Board of Directors, to dispose of, sell, exchange or trade supplies, materials or equipment of the District, which do not exceed a market value of \$5,000, which cannot be used or which have become unsuitable for District use.

ARD has a 1993 Kubota L2900 tractor with 2,689 hours that has become unsuitable for use as it will not effectively operate the turf aerator. This Kubota tractor is fully depreciated (residual value of \$1,150 on ARD's depreciation schedule) and can be used for its trade value (\$7,000) toward the purchase of new tractor suitable for powering the turf aerator.

ARD has a 2006 John Deere 1600 lawn mower with 2,633 hours that currently requires at least \$13,000 worth of repairs. This mower is fully depreciated (residual value of \$4,388 on ARD's depreciation schedule) The ARD Obsolescence List called for the replacement of this lawn mower this year. The trade-in value of this mower is \$2,500.

Recommendation

Staff recommends decommissioning the Kubota tractor and John Deere mower.

Alternatives Available to the Board of Directors

1. Do not decommission the tractor and/or mower
2. Make the tractor and/or mower available for bidding at a public auction

Fiscal Impact

The trade-in value of the tractor is \$7,000

The trade-in value of the mower is \$2,500

Attachments

Info and pricing on used Kubota tractors

Info and pricing on used John Deere 1600 mowers

Kubota L2900,L2900DT,L2900GST Tractors

0 FEATURED LISTINGS within 200 miles of 95603

Sorry! There are no Featured Listings that match the distance selected.
To change ZIP or distance, click the pencil icon above.

4 REGULAR LISTINGS



6

98 Kubota L2900GST

Price : \$15,400.00 USD
Horse Power : 29

What are you looking for?

GINOP SALES

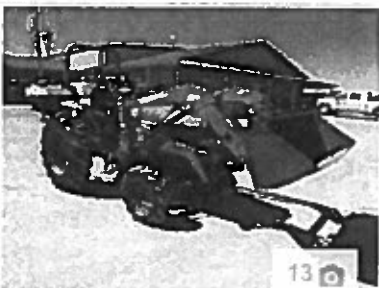
(231) 548-2272/1-800-344-

ALANSON, MI 49706



Save

Last Updated : 1/18/2018



13

Kubota L2900

Price : \$7,450.00 USD
Hours : 1572
Horse Power : 32

EDS USED MACHINERY, LLC
888-320-1981

MEMPHIS, MO 63555 | See Map

Email Sell



Save

Last Updated : 4/24/2018



2

1996 Kubota L2900

Price : \$6,400.00 USD
Horse Power : 32.1

MILES TRACTOR CO.
912-367-4343

BAXLEY, GA 31513 | See Map

Email Sell



Save

Last Updated : 3/14/2018



9

1999 Kubota L2900

Price : \$6,300.00 USD
Hours : 693
Transmission : Syncro
Horse Power : 30



864-847-8400

WILLIAMSTON, SC 29697

Email Sell



Save

Find Used Equipment (<https://www.machinerypete.com/>) > Tractors (<https://www.machinerypete.com/tractors>)
 > Under 40 HP (<https://www.machinerypete.com/tractors/under-40-hp>)
 > Kubota (<https://www.machinerypete.com/tractors/under-40-hp/kubota>)
 > L2900 (<https://www.machinerypete.com/tractors/under-40-hp/kubota/l2900>)

Used Kubota L2900 Tractors for Sale

☰ Filter Your Results

Showing all 2 Listings



(</details/under-40-hp/kubota/l2900/19489019>)

13 photos

Memphis, MO

(660) 883-5501 (tel:+16608835501)

Ron Hoover

Kubota L2900 (</details/under-40-hp/kubota/l2900/19489019>)

♡ Save

\$7,450

Drive: MFWD

HP: 32

Hours: 1572

540 PTO, Joystick, GST Trans, Forward Reverser, Woods 65 Loader, 5' Bucket, Lights in Rear Fender Missing

[Ed's Machinery LLC](#)

(</store/ed>

-s-

machiner

y-llc-

memphis

)

Ed's Machinery, LLC - Memphis

(</store/ed-s-machinery-llc-memphis>)



(/details/under-40-hp/1999/kubota/l2900/19350285)

9 photos

Williamston, SC

(864) 847-8400 (tel:+18648478400)

Billy Bryant

1999 Kubota L2900 (/details/under-40- hp/1999/kubota/l2900/1935028

5)

♡ Save

\$6,300

Drive: MFWD

HP: 30

Hours: 693

Cab: No Cab, Transmission: Syncro, Front Axle:

MFWD, Loader: No, Mid Mount Mower: Yes,

CONTACT CHRIS OR BRANDON IN

SALES.864-847-8400



(/store/ag

-pro-

williamst

on)

Ag-Pro - Williamston (/store/ag-pro-
williamston)

Become a Dealer Partner (/become-a-dealer-partner) | Dealer Partner Login (/users/sign_in) |

Subscribe to Auction Price Data (/auction-price-data-subscribe) | Report Purchase (/report_purchase)

Contact Us (/contact-us) | About Machinery Pete (/about-us) |

Books & Merchandise (http://www.shopfarmjournal.com/machinery-pete-v2.php) |

Advertise (mailto:customersupport@machinerypete.com) | Terms of Use (/service/terms) |

Privacy Policy (/service/privacy) |

 (https://www.facebook.com/machinerypete)  (https://twitter.com/MachineryPete) 

(https://www.youtube.com/machinerypete)

MachineryPete.com © 2018

v Deploy 4d10784f



Express Financing
is a Preferred Partner
of *TractorHouse*®

✓ express

(833) 520-7672

Kubota - Kubota is a Japan-based manufacturer that today sells a broad range of farm and construction equipment in more than 110 countries. [Read More](#)

KUBOTA L2900 For Sale

9 Results Found | This Page: 1 of 1



MASSEY FERGUSON

America's LARGEST Massey Dealer!
Full Line Of New Massey Ferguson Equipment In Stock & Ready To Ship!
FREE NATIONWIDE SHIPPING!
Delivered right to YOUR front door by OUR employees!
CALL FOR THE BEST PRICING!

BRUNO'S TRACTOR
NO TAX!*
501-232-3115

[CLICK HERE](#) FOR RENTAL UNITS



8

2009 KUBOTA L2900

good tractor everything works as it should. 5ft frontend loader. Year not verified Radio, Loader, Loader Make: kubota, PTO: 540, Three Point Hitch, Tires or Tracks: Tires

Hours: 1,640

Drive: 4 WD

Horsepower: 32

Serial Number:

L2900

For Sale Price:

USD \$14,000

Iron Dogs
Martin, Tennessee 38237
[\(731\) 203-7002](tel:7312037002)

Updated: Tue, May 1, 2018 9:40 AM

[View Details](#)



2003 KUBOTA L2900

Chickasaw Equipment

Drive: 4 WD

For Sale Price:

Ho

Horsepower: 32

USD \$8,095

✓ express

Express

043

Financing

(833) 520-

Condition: Used Preferred Partner

of TractorHouse®

7672

1:44 PM

[View Details](#)

Escrow >

UNICO Insurance >

FREESTAR Shipping >

Financing >



9

1999 KUBOTA L2900

CONTACT CHRIS OR BRANDON IN SALES. 864-847-8400, Mid Mount Mower: Yes Transmission Type: Synchro

Hours: 693

For Sale Price:

Drive: MFWD

USD \$6,300

Horsepower: 30

Serial Number:

L2900E11589

Ag-Pro Companies

WILLIAMSTON, South

Carolina 29697

(864) 847-8400

Updated: Mon, April 23, 2018 9:40 AM

[View Details](#)

Escrow >

UNICO Insurance >

FREESTAR Shipping >

Financing >

1996 KUBOTA L2900

1996 KUBOTA L2900DT TRACTOR,4WD,SERIAL #55423 32HP,3 CYLINDER DIESEL,8 X8 SYNCHRO-SHUTTLE MID & REAR PTO,ROPS,CAT #1 3 POINT HITCH,1315 HOURS DIFF-LOCK,R4 INDUSTRIAL TIRES,REAR TIRES LOADED KUBOTA LA480 Q/A LOADER ASSY,SERIAL #14486 L2075 VALVE,L1724A 60" PIN ON BUCKET ASSY. Loader

Hours: 1,315

For Sale Price:

Drive: 4 WD

USD \$13,495

Horsepower: 32

Serial Number:

55423 W/LDR

Ginop Sales Inc.

Williamsburg, Michigan

49690

(231) 267-5400

9

Updated: Wed, April 4, 2018 8:58 AM



Express

✓ express ^{Via}



Financing >



(833) 520-

is a Preferred Partner
of TractorHouse®

7672

KUBOTA L2900

540 PTO, Joystick, GST Trans, Forward Reverser, Woods 65 Loader, 5' Bucket, Lights in Rear Fender Missing

Ed's Used Machinery, LLC

Hours: 1,572

For Sale Price:

Memphis, Missouri 63555

Drive: MFWD

USD \$7,450

(660) 839-6028

Horsepower: 32

Serial Number:

59807

13

Updated: Fri, May 4, 2018 8:07 AM

[View Details](#)



Escrow >



UNICO Insurance >



FREESTAR Shipping >



Financing >



Express Financing

is a Preferred Partner of TractorHouse®

✓ express

(844) 786-5624

[CLICK HERE](#)

1996 KUBOTA L2900DT

1996 Kubota L2900 Platform Tractor, 1862 Hours, Diesel, Shuttle Transmission, 4 X 4, 2005 Kubota LA482 Front End Loader, 540 Rear PTO, Power Steering, Differential Lock Differential Lock, Fuel Type: Diesel, Loader, Loader Make: Kubota, Loader Model: LA482, PTO: 540, ROPS, Three Point Hitch, Tr...

Jennings Implement Company

Bement, Illinois 61813

(217) 448-2003

18

Hours: 1,862

For Sale Price:

Drive: MFWD

USD \$11,900

Horsepower: 29

Serial Number:

55451

Updated: Thu, May 3, 2018 4:47 PM

[View Details](#)

UNICO Insurance >

FRESTAR Shipping >



Express

✓ express

998 KUBOTA L2900GST

(833) 520-

PRICE REDUCED! 1998 KUBOTA L2900GST

TRACTOR, 4WD, Forward, #19068, HP, 3 CYLINDER DIESEL, 6X 8

7672

GST TRANSMISSION, 3655 HRS MID & REAR PTO, CAT #1

(231) 548-2272

3POINT, FIXED ROPS, DIFF LOCK, P/S TURF TIRES, REAR TIRES

LOADED, KUBOTA LA480 Q/A LOADER ASSY, SERIAL

#19713, GRILL GUARD L2076 JOYSTICK VALVE, 60" PIN ON BU...

10

Hours: 3,655

For Sale Price:

Drive: 4 WD

USD \$15,400

Horsepower: 32

Serial Number:

62906 LDR/F-BLW

Updated: Wed, April 4, 2018 8:58 AM

[View Details](#)

Escrow >

UNICO Insurance >

FRESTAR Shipping >

Financing >

1995 KUBOTA L2900GST

CLEAN TRACTOR SMC LOADER Differential Lock, Forward

Speed: 8, Fuel Type: Diesel, Loader, Loader Make: SMC, Loader

Model: 84Q, Rear Tire Type: Singles, Reverse Speed: 8, ROPS,

Three Point Hitch, Transmission Type: Powershift

Niebur Tractor &

Equipment, Inc.

Hastings, Minnesota 55033

(651) 726-1187

9

Hours: 915

For Sale Price:

Drive: 4 WD

USD \$12,500

Horsepower: 29

Serial Number:

53462

Updated: Wed, May 2, 2018 4:34 PM

[View Details](#)

Escrow >

UNICO Insurance >

FRESTAR Shipping >

Financing >

1995 KUBOTA L2900GST

JOHN DEERE 1600
 EXPRESS MOWER. 1040
 VERY NICE UNIT THAT WAS OWNED BY A
 ESTATE. ASK FOR TIM FOR MORE
 is a Preferred Partner
 of TractorHouse®
 For Sale Price:

express
 Buck Bros. Inc.
 HAMPSHIRE, Illinois
 (833) 520-60140
 (847) 777-4120
 7672

1,040
 Serial Number: **USD \$26,900**
 TC1600T060329
 Condition: Used
 Stock Number:
 B0066739

Updated: Sat, April 14, 2018 8:40 AM

[View Details](#)

Escrow > UNICO Insurance > FREESTAR Shipping > Financing >



2007 JOHN DEERE 1600
 LIQUID COOLED DIESEL ENGINE W/TURBO, 4X4,
 10' CUTTING WIDTH, 4 POST CANOPY, 1600 Series
 II Turbo, 4 Cylinder Turbo Diesel Yanmar engine 57
 HP, 11' cutting width, 4 post ROPS canopy Overall
 nice mower, 4WD, Drive: AWD Fuel Type: Diesel

Kibble Equipment -
Owatonna
 OWATONNA,
 Minnesota 55060
 (507) 451-4054

12

Hours: 2,848 **For Sale Price:**
 Serial Number: **USD \$18,500**
 TC1600T060256
 Condition: Used
 Stock Number:
 513372

Updated: Mon, May 7, 2018 7:45 AM

[View Details](#)

Escrow > UNICO Insurance > FREESTAR Shipping > Financing >



2007 JOHN DEERE 1600
 HOURS 2450. JD BATWING RIDE ON MOWER.
 DIESEL 4X4. LARGE AREA CUTTING 3

FNR Machinery

INDEPENDENT DECKS.

Wisbech, United



For Sale Price:
USD \$9,349

Kingdom PE147AP

+44 1945 300018

Condition: Used

TractorHouse is a Preferred Partner
of TractorHouse®

+44 7788 611151
(833) 520-

7672

Updated: Mon, April 23, 2018 4:48 AM

[View Details](#)



2006 JOHN DEERE 1600

Wide-Area-Mower - 10.5' Cut - 4-Post ROPS w/
Canopy - 4wd - Run Flat Tires on Decks - Just
Serviced and New Blades!, Wide Area Mower 126"
Cut (10.5FT) Rear Discharge 4-Post ROPS w/
Canopy New Rear Tires Solid Run-Flat Tires on
Decks New Mower Blades Fresh Engine Service New
Rear Tires, ...

Kenn-Feld Group

Woodburn, Indiana

46797

(260) 638-5038

15

Hours: 2,923 **For Sale Price:**

Serial Number: **USD \$18,900**

TC1600T050417

Condition: Used

Stock Number:

96889

Updated: Thu, April 12, 2018 8:21 AM

[View Details](#)



2006 JOHN DEERE 1600

John Deere 1600 WAM, one owner, in good working
condition. 11' foot cutting width, \$80,000 new. Contact
Ian for more details!, Drive: AWD Fuel Type: Diesel

PrairieCoast

Equipment - Grande

Prairie

LANGLEY, British

Columbia, Canada

V3A 6K8

3

Hours: 866 **For Sale Price:**

Serial Number: **USD \$13,512**

TC1600T050392

ion: Used

+1 888-841-8520



Express

✓express

Financing

(833) 520-

9:01 AM

is a Preferred Partner
of *TractorHouse*[®]

7672

[View Details](#)

Escrow > UNICO Insurance > FREESTAR Shipping > Financing >



2005 JOHN DEERE 1600

2005 John Deere 1600 TURBO WIDE AREA
MOWER SERIES II, FOUR WHEEL DRIVE, THREE
CYLINDER YANMAR DIESEL ENGINE, 2,150
HOURS, HYDRAULIC DECK LIFT, HYDRAULIC
DRIVEN DECKS., Drive: 2WD Fuel Type: Diesel

P&K Equipment

STILLWATER,
Oklahoma 74074

(405) 743-4050

19

Hours: 2,146 **For Sale Price:**

Serial Number: **USD \$9,500**

TC1600T040252

Condition: Used

Stock Number:

227359

Updated: Tue, May 8, 2018 8:01 AM

[View Details](#)

Escrow > UNICO Insurance > FREESTAR Shipping > Financing >

2004 JOHN DEERE 1600

64 Hp Yamar Diesel Engine, AWD, 128" Mowing
Width, 64 HP Yanmar Diesel Water Cooled Twin
Pedal Dual Range Hydro Hydro Trans, 0 - 14 MPH 22
Gal. fuel Tank 2 Post ROPS 128" cutting width, 3
sections each controlled seperately Deluxe High Back
Adjustable seat with arm rests, Drive: AWD Fu...

Kenn-Feld Group

Edgerton, Ohio
43517

(260) 638-5038

9

Hours: 2,080 **For Sale Price:**

Serial Number: **USD \$18,500**

TC1600T030117

Condition: Used

Item 2. Cover Sheet: Resolution #2018-09: Purchase of New Kioti Tractor and a New Toro TriDeck Mower

Auburn Area Recreation and Park District Special Board meeting May 10, 2018

The Issue: Shall the Auburn Area Recreation and Park District (ARD) Board of Directors approve and adopt Resolution #2018-09, Authorizing the District Administrator to Purchase a New Kioti Tractor and a new Toro Mower?

Background: In April of 2018, the ARD Board approved the 2018/2019 budget and Obsolescence List. The new Kioti Tractor was included in the list and budget. The District has obtained three quotes (attached), one for a John Deere, one for the Kioti (a Kubota product) and one for a Case tractor and the lowest price was received from N&S Tractor in Yuba City for the Kioti tractor. N&S has also agreed to take the District's 1994 Kubota L2900 in trade in the amount of \$7000 (see quote attached).

At the April Board meeting, the Board also approved the purchase of a new Toro TriDeck mower to replace a John Deere that has broken down and requires at least \$13,000 of repair work. Staff received three bids (attached), one for a replacement John Deere, one for the Toro and one for a Jacobsen. Due to the myriad of problems the District has had with the Deere mowers, in addition to their complexity, F&G staff recommended against the Deere (see relevant email attached).

Recommendation: Staff recommends ARD Board of Directors approve and adopt Resolution #2018-09, authorizing the District Administrator to purchase a new Kioti Tractor and a new Toro Mower

Fiscal Impact: The purchase of the Kioti Tractor will be made from the Equipment Reserve for a total of \$24,098.78 (after trade-in).

The purchase of the Toro mower will be made from the Equipment Reserve in the amount of \$62,496.38 (after trade-in).

There is currently \$948,885.72 in the Equipment Replacement Reserve. The new amount after these purchases will be \$862,290.56.

Attachments: Resolution #2018-09
Price quotes for Tractor
Price quotes for Mower
Email from staff

RESOLUTION NUMBER 2018-09

A RESOLUTION OF THE GOVERNING BOARD OF DIRECTORS OF THE
AUBURN AREA RECREATION AND PARK DISTRICT APPROVING THE
PURCHASE OF A KIOTI TRACTOR AND A TORO LAWN MOWER

WHEREAS the Auburn Area Recreation and Park District Board of Directors has created an Equipment Reserve Fund to assist with the purchase of new and replacement equipment, and

WHEREAS, the Auburn Area Recreation and Park District Board of Directors has also created an Obsolescence List to help inform decisions on equipment replacement, and

WHEREAS, the Auburn Area Recreation and Park District Board of Directors approved the FY 2018/2019 budget and the updated Obsolescence List, both of which approved the replacement of a tri-deck, commercial lawn mower, and

WHEREAS, the Auburn Area Recreation and Park District Board of Directors approved the FY 2018/2019 budget and the updated Obsolescence List, both of which approved the replacement of a Kubota tractor, THEREFORE

The Auburn Area Recreation and Park District Board of Directors, does hereby resolve the following:

That the Auburn Area Recreation and Park District authorizes the District Administrator to purchase a new lawn mower and tractor with funding from the Equipment Reserve Fund in the amounts of \$62,496.38 for the lawn mower and \$24,098.78 for the tractor.

APPROVED, PASSED, AND ADOPTED ON May 10, 2018 by the following roll call vote:

Ayes:

Noes:

Absent:

Abstain:

James A. Gray
Chairman of the Governing Board

ATTEST:

Clerk to the Governing Board



Purchase Agreement

www.nstractor.com

Colusa: 530-458-2166
Stockton: 209-944-5500

Dos Palos: 209-392-2161
Turlock: 209-634-1777
Yuba City: 530-923-7675

Merced: 209-383-5888
Willows: 530-934-3382

Prepared For: Auburn Rec District
Address: Auburn CA
Phone: (530) 537-7250

Quote Number: Q-TG01-012318-120144
Presented By: Tyler George
Date Prepared: 1/23/2018

Quoted Equipment Overview

New 2017 KIOTI DK4510HSB

Stock #: SKT08 Serial #: TR7700020

Engine Hours: 9.0 Delivery Included

Equipment Specs. -- Kioti DK4510 with 3 cylinder diesel engine, 45 gross HP (41.6 PTO HP), 11.9 gal fuel tank, Mechanical differential lock and 4WD, 540 RPM PTO, 8F/8R synchronized hydraulic shuttle transmission, 1 hydraulic remote, Front tires 8x16 AG, Rear tire 13.6x24 AG, KL5510 loader with 66" quick attach bucket, 6 year unlimited hour warranty, 2 year base warranty with an additional 4 years of powertrain warranty.

New Order 2018 Kioti KL5510 Loader

Stock #: TBD Serial #: TBD

Engine Hours: None Delivery Included

Equipment Specs. -- 2018 KL 5510 loader with 66" quick attach bucket, Grill guard, Loader joystick and valve.

Trade-in Equipment Overview

<u>Year, Make, Model -Serial #</u>	<u>Hours</u>	<u>Trade Value**</u>
1994 Kubota L2900-50101	2,689	\$7,000.00
0	0	
0	0	

Pricing

2017 KIOTI DK4510HSB: \$23,910.00
2018 Kioti KL5510 Loader: \$5,080.00

Subtotal: \$28,990.00
Sales Tax 7.25%: \$2,101.78

Subtotal: \$31,091.78
Tire Tax: \$7.00

Net Trade (Trade Value less Payoff)*** \$(7,000.00)

Total Price: \$24,098.78

Quote Expires: 2/28/2018

**Trade value excludes any balance owed.

*** Net trade value may vary pending final balance provided by lien holder(s).

Accepted By:

Date:

Comments:



Purchase Agreement

www.nstractor.com

Colusa: 530-458-2166
Stockton: 209-944-5500

Dos Palos: 209-392-2161
Turlock: 209-634-1777
Yuba City: 530-923-7675

Merced: 209-383-5888
Willows: 530-934-3382

Prepared For: Auburn Rec District
Address: Auburn CA
Phone: (530) 537-7250

Quote Number: Q-TG01-021518-095057
Presented By: Tyler George
Date Prepared: 2/15/2018

Quoted Equipment Overview

Rental Return 2015 CASE IH FARM75C
Stock #: WCA070 Serial #: ZFAL03505
Engine Hours: 348.0 Delivery Included

Equipment Specs. -- FARMALL 75C: 75hp, 8x8 power shuttle transmission, Mechanical 3 point hitch with ground control, 21.5x16.1 R3 rear turf tires, 12x16.5 R3 front turf tires, 2 rear remotes, 540 RPM PTO, MFD front axle, Case-IH L620 mechanical self leveling loader, Skid steer quick attach and 84" bucket.

Pricing

2015 CASE IH FARM75C: \$39,980.00

Subtotal: \$39,980.00
(Qualified Agriculture Only) Sales Tax 2.25%: \$899.55

Subtotal: \$40,879.55
Tire Tax: \$7.00

Net Trade (Trade Value less Payoff)*** \$(7,000.00)

Total Price: \$33,886.55

Quote Expires: 2/28/2018

Trade-in Equipment Overview

<u>Year, Make, Model -Serial #</u>	<u>Hours</u>	<u>Trade Value**</u>
1994 Kubota L2900-S0101	2,689	\$7,000.00
0	0	
0	0	

**Trade value excludes any balance owed.

*** Net trade value may vary pending final balance provided by lien holder(s).

Accepted By:

Date:

Comments:

Quote Id: 16799124

**ALL PURCHASE ORDERS MUST BE MADE OUT
TO (VENDOR):**

Deere & Company
2000 John Deere Run
Cary, NC 27513
FED ID: 36-2382580; DUNS#: 60-7690989

**ALL PURCHASE ORDERS MUST BE SENT
TO DELIVERING DEALER:**

Valley Truck and Tractor Inc
10490 E Stockton Blvd Ste400
Elk Grove, CA 95624
916-714-2600
general@vtco.net

Prepared For:

Auburn Parks And Recreation



Proposal For:

Delivering Dealer:

Danny Chase

Valley Truck and Tractor Inc
10490 E Stockton Blvd Ste400
Elk Grove, CA 95624

general@vtco.net

Quote Prepared By:

Danny Chase
dchase@vtco.net



JOHN DEERE



ALL PURCHASE ORDERS MUST BE MADE OUT TO (VENDOR):

Deere & Company
2000 John Deere Run
Cary, NC 27513
FED ID: 36-2382580; DUNS#: 60-7690989

ALL PURCHASE ORDERS MUST BE SENT TO DELIVERING DEALER:

Valley Truck and Tractor Inc
10490 E Stockton Blvd Ste400
Elk Grove, CA 95624
916-714-2600
general@vttco.net

Quote Summary

Prepared For:

Auburn Parks And Recreation
3770 Richardson Rd
Auburn, CA 95603

Delivering Dealer:

Valley Truck and Tractor Inc
Danny Chase
10490 E Stockton Blvd Ste400
Elk Grove, CA 95624
Phone: 916-714-2600
dchase@vttco.net

Quote ID: 16799124
Created On: 12 February 2018
Last Modified On: 12 February 2018
Expiration Date: 23 March 2018

Equipment Summary	Suggested List	Selling Price	Qty	Extended
JOHN DEERE 3046R Compact Utility Tractor (34 PTO hp) Contract: NJPA Grounds Maintenance Equipment, Attachments, Accessories 062117-DAC (PG NB) Price Effective Date: February 12, 2018	\$ 35,795.00	\$ 29,709.85 X	1 =	\$ 29,709.85
Equipment Total				\$ 29,709.85

* Includes Fees and Non-contract items

Quote Summary

Equipment Total	\$ 29,709.85
Trade In	
SubTotal	\$ 29,709.85
Sales Tax - (7.75%)	\$ 2,302.51
Est. Service	\$ 0.00
Agreement Tax	
Total	\$ 32,012.36
Down Payment	(0.00)
Rental Applied	(0.00)
Balance Due	\$ 32,012.36

Salesperson : X _____

Accepted By : X _____

Confidential



JOHN DEERE

Selling Equipment



Quote Id: 16799124 Customer Name: AUBURN PARKS AND RECREATION

ALL PURCHASE ORDERS MUST BE MADE OUT TO (VENDOR):

Deere & Company
2000 John Deere Run
Cary, NC 27513
FED ID: 36-2382580; DUNS#: 60-7690989

ALL PURCHASE ORDERS MUST BE SENT TO DELIVERING DEALER:

Valley Truck and Tractor Inc
10490 E Stockton Blvd Ste400
Elk Grove, CA 95624
916-714-2600
general@vttco.net

JOHN DEERE 3046R Compact Utility Tractor (34 PTO hp)

Contract: NJPA Grounds Maintenance Equipment,
Attachments, Accessories 062117-DAC (PG NB)

Suggested List *

\$ 35,795.00

Price Effective Date: February 12, 2018

Selling Price *

\$ 29,709.85

* Price per item - includes Fees and Non-contract items

Code	Description	Qty	List Price	Discount%	Discount Amount	Contract Price	Extended Contract Price
0292LV	3046R Compact Utility Tractor (34 PTO hp)	1	\$ 30,101.00	17.00	\$ 5,117.17	\$ 24,983.83	\$ 24,983.83
Standard Options - Per Unit							
0202	United States	1	\$ 0.00	17.00	\$ 0.00	\$ 0.00	\$ 0.00
0409	English Operator's Manual and Decal Kit	1	\$ 0.00	17.00	\$ 0.00	\$ 0.00	\$ 0.00
1520	eHydro	1	\$ 0.00	17.00	\$ 0.00	\$ 0.00	\$ 0.00
1701	Factory Installed Loader with Bucket	1	\$ 5,849.00	17.00	\$ 994.33	\$ 4,854.67	\$ 4,854.67
2000	Open Station with Standard Seat	1	\$ 0.00	17.00	\$ 0.00	\$ 0.00	\$ 0.00
2650	Less Radio	1	\$ 0.00	17.00	\$ 0.00	\$ 0.00	\$ 0.00
3320	Dual Mid Selective Control Valve	1	\$ 0.00	17.00	\$ 0.00	\$ 0.00	\$ 0.00
3400	Less Mid PTO	1	\$ 0.00	17.00	\$ 0.00	\$ 0.00	\$ 0.00
4061	Less iMatch Quick Hitch Category 1	1	\$ 0.00	17.00	\$ 0.00	\$ 0.00	\$ 0.00
5223	41x14-20 (4PR, R3 Turf, 2 Position)	1	\$ -220.00	17.00	\$ -37.40	\$ -182.60	\$ -182.60
6223	27x8.50-15 (6PR, R3 Turf, 2 Position)	1	\$ 65.00	17.00	\$ 11.05	\$ 53.95	\$ 53.95
Standard Options Total			\$ 5,694.00		\$ 967.98	\$ 4,726.02	\$ 4,726.02
Value Added Services Total			\$ 0.00			\$ 0.00	\$ 0.00
Suggested Price						\$ 29,709.85	
Total Selling Price			\$ 35,795.00		\$ 6,085.15	\$ 29,709.85	\$ 29,709.85

Privacy and Data Policy Overview
VALLEY TRUCK AND TRACTOR COMPANY

Effective Date: June 15, 2014

This is only a summary of our Privacy and Data Policy. For more information you can review a complete version of our Privacy and Data Policy located on our website at www.valleytruckandtractor.com or by requesting a copy at our Administrative and Training Center Located at 1003 Stabler Lane in Yuba City or by calling us at (530) 673-4615

This Privacy and Data Policy Overview provides a description of the privacy and data use practices of Valley Truck and Tractor Company (“us”, “we” or “our”) in connection with our receipt, collection and use of data and information from you as our customer, visitor, or user, as applicable. The policy may be changed or updated from time to time. If there is any conflict between this Overview and our full Privacy and Data Policy, the terms of our full Privacy and Data Policy will control.

Collection of Data:

The types of information we collect and share depend on the products or services you purchase, license or access from us or third parties through which you have authorized us to receive information (such as through John Deere’s JD Link™ Telematics system or Trimble’s “Connected Farm” system). We generally receive, collect, use and share both Customer Data (including social security numbers, names, addresses, phone numbers, and other personal information) and Machine Data (information related to the performance, use, and location of equipment or computers with various information collection devices) as described in this Policy (collectively “Data”). **You agree to notify all personnel that use any tracked equipment that their use and location is remotely monitored.** If you need to update or change any information which you previously provided to us then you may contact us at privacy@vtco.net.

Protection of Data:

We strive to protect your Data using commercially reasonable standards. We use a variety of commercially reasonable security technologies to help protect your Data from unauthorized access, use, or disclosure. However, the use of such standards and security technologies is not, and should not be considered to be, any type of guarantee or warranty by us that your Data will not be accessed by third parties.

Sharing and Use of Data:

We use your Data to provide products, services and information to you. Some of the services are designed to allow faster communications and responsiveness between you and us to ensure that we provide services to you as efficiently as possible. We may also review equipment diagnostic information remotely to diagnose and recommend equipment maintenance and repairs. We share your information with certain third parties in order to better serve you or upon your request or approval. These third parties may include equipment suppliers, financing institutions or other third party service providers who assist us in providing the products and services you request or their respective subsidiaries or affiliates. We also may share your information with our marketing, technical, accounting, legal or other professionals to assist us in our business operations. If you purchase products for personal, family, or household use through financing that is provided by us or facilitated by us, you may request that we not share your personal information derived from that transaction with unaffiliated third parties by returning the opt-out form at the bottom of our Privacy and Data Use Policy.

If you have any additional questions, please contact us at privacy@vtco.net



Purchase Agreement

www.nstractor.com

Colusa: 530-458-2166
Stockton: 209-944-5500

Dos Palos: 209-392-2161
Turlock: 209-634-1777
Yuba City: 530-923-7675

Merced: 209-383-5888
Willows: 530-934-3382

Prepared For: Auburn Rec District
Address: 123 Recreation Dr, Auburn CA 95603
Phone: (530) 577-7250

Quote Number: Q-TG01-020818-184157
Presented By: Tyler George
Date Prepared: 2/8/2018

Quoted Equipment Overview

New 2016 CASE IH FARM30C

Stock #: YCA146 Serial #: 2242011085
Engine Hours: 10.0

Delivery Included

Equipment Specs. -- New 2016 Case IH Farmall 30C, 30hp, Rops, 12x12 synchro shuttle transmission, 1 Remote SDA, Front tires 25x8.50-14 6PR R4, Rear tires 43x16.00-20 R4, L350A Case IH loader with skid steer quick attach, Factory 2 year or 2000 hour warranty.

New 2016 CASE IH L350A

Stock #: YCI106 Serial #: YFM353160
Engine Hours: 0.0

Delivery Extra

Equipment Specs. -- L350A: 68in Bucket

Pricing

2016 CASE IH FARM30C: \$18,540.00
2016 CASE IH L350A: \$4,990.00

Subtotal: \$23,530.00
Sales Tax 7.25%: \$1,705.93

Subtotal: \$25,235.93
Tire Tax: \$7.00

Total Price: \$25,242.93

Quote Expires: 2/28/2018

Accepted By:

Date:

Comments:

TORO

Groundsmaster® 4000-D/4010-D

WIDE AREA ROTARY MOWERS

FEATURES

- 55 hp (41 kW) Yanmar® engine, Tier 4 Final Compliant, turbo-diesel engine
- Smart Power™ - optimized mowing in all conditions
- Foldable ROPS
- 11' (3.4 m) width of cut
- Full-time 4WD forward and reverse
- All-time traction assist assures full-time 4WD
- 0° uncut circle in turns
- SmartCool™ auto-reversing cooling fan
- HybridDrive™ cutting deck system delivers unmatched reliability
- 4-way adjustable seat and Air Ride Suspension
- InfoCenter™ displays simple operating info while monitoring machine health
- Integrated ControlHub® with fingertip electronic controls
- Top and rear air intake for increased cooling
- Climate-controlled safety cab with air conditioning and heater (4010-D)
- Isolated operator platform for greater comfort and smoother ride

Operator-friendly and smart by design.

With Smart Power™ technology, high engine torque and patented, HybridDrive™ cutting deck system, the Groundsmaster 4000-D and 4010-D deliver power where you need it most – to cut grass, no matter how tough the conditions. With their excellent trimming capability, you'll maneuver around obstacles with ease. Both mowers can mow a 0° uncut circle, allowing you to mow back and forth patterns without leaving any uncut grass. The patented, parallel hydraulic traction system maintains consistent hydraulic flow between the front and rear wheels to assure full time 4-wheel drive. This allows you to mow with confidence, even on hills and wet grass.

toro.com/4000



Groundsmaster® 4010-D

Groundsmaster® 4000-D

TIER

SMART POWER

Call your Toro distributor at 800-803-8676

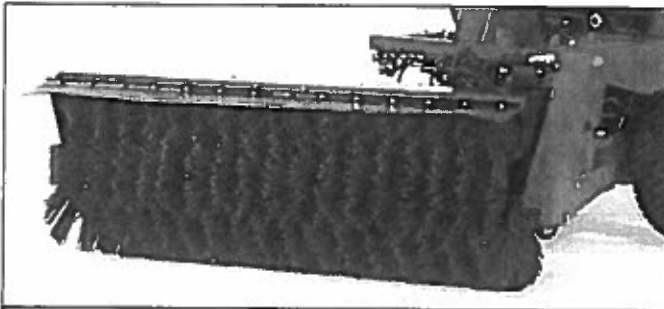
		GROUNDMASTER 4000-D, TIER 4 DIESEL, MODEL 30609 GROUNDMASTER 4010-D, TIER 4 DIESEL, MODEL 30636				
ENGINE		Yanmar® 4-cylinder, liquid-cooled, turbo-charged diesel, 127 cu. in. (2.1 liter) displacement. Engine rated at 55 hp (41 kW) net and 125 ft.-lbs. (169 Nm) torque at 2,000 rpm. 8 quart (7.6 liter) oil capacity. EPA Tier IV Final Compliant				
AIR CLEANER		Dry, replaceable primary and safety elements.				
RADIATOR		Rear-mount, cross-flow, 7-row, 6.3 fins per inch, 9 quart (8.5 liter) capacity.				
FUEL CAPACITY		21 gallons (79.5 liters) diesel fuel. Biodiesel-Ready for use up to B-20(20% biodiesel and 80% petroleum blend)				
TRACTION DRIVE		Parallel hydrostatic, closed loop system with full-time 4WD. Forward/reverse in low (mow) and high (transport) range with full-time, automatic traction assist (forward only) standard on Groundsmaster 4000-D models. Variable displacement piston pump with electronic servo control powers dual speed displacement piston motor drive into double reduction planetary in front, and mechanical axle in rear. SmartPower™ feature controls traction speed to maintain optimal cutting blade speed.				
HYDRAULICS/COOLING		8.75 gallon (33.1 liter) capacity with 10 micron remote spin-on filter. 9 row, single pass cooler, 6.3 fins per inch, that tilts out for cleaning. Variable speed radiator cooling fan with automatic (based on coolant and oil temps) and manual reversing capabilities.				
DIAGNOSTICS		Diagnostic pressure test ports: forward and reverse traction, left, center and right decks, reverse 4WD, lift, steering, charge and deck counterbalance circuits				
GROUND SPEED		Transport: 0-16.2 mph (0-26.1 km/h) forward, 0-8.1 mph (0-13 km/h) reverse. Mow: 0-8.3 mph (0-13.4 km/h) forward, 0-4 mph (0-6.4 km/h) reverse.				
TIRES		Front: 26 x 12-12, 6-ply tubeless Multi-Trac. Rear: 20 x 10-10, 6-ply tubeless Multi-Trac.				
MAIN FRAME		All welded formed-steel frame with integral tie-down anchors.				
BRAKES		Mechanically actuated, internal wet disc brakes on input to each planetary drive. Individual foot-operated steering brake control of left and right wheel. Lock pedals together and latch to engage parking brake.				
SEAT		4-way adjustable, right armrest travels with seat and suspension.				
STEERING		Power steering with dedicated power source. Steering wheel tilts to desired operator position. Uncut circle: 0" diameter.				
INSTRUMENTATION		InfoCenter™: Onboard LCD display shows gauges, alerts/fauls, service reminders, electrical system diagnostics. Indicates fuel level, coolant temp, intake temperature, low oil pressure, alternator, engine hours, engine rpm, hydraulic oil temperature, voltage				
CONTROLS		Tilt steering, ignition switch, throttle switch, foot-operated traction pedal, lockable individual brake pedals, parking brake lock, mow/transport speed selector switch, 3 two position switches for individual deck lift/lower, counterbalance adjustment, tow valves, cup holder, toolbox, radio holder, fan switch and 12-volt power outlet.				
CRUISE CONTROL		Standard				
ELECTRICAL		12-volt, 690 cold cranking amps battery, 80 amp alternator (4010-D). Overload protection with automotive type fuses.				
INTERLOCKS		Prevents engine from starting unless traction pedal is in neutral and deck is disengaged. If operator leaves seat while moving or deck is engaged, traction and / or deck stops, info center alarms and gives message. Mowing only permitted in low range. Traction not allowed if parking brake engaged and pedal moved out of neutral, info center alarms and gives message. Deck transport latches.				
GROUND CLEARANCE		6.5" (16.5 cm)				
OVERALL DIMENSIONS		Height 85" (216 cm) w/ROPS up 93.5" (237 cm) w/ cab	Length 135 (343 cm) w/decks down	Width 136 (346 cm) w/decks down	Transport Width 71 (180 cm) (@ 2" (5 cm) HOC)	Wheelbase 55.5 (141 cm)
WEIGHT		4205 lbs. (1907 kg) w/ full fluids (GM4000).		4759 lbs. (2159 kg) w/ full fluids (GM4010).		
SAFETY CAB (4010)		MODEL 30636: ROPS certified cab with heat, AC and the following standard features: climate system pressurized cab, heavy-duty pantograph front windshield wiper and washer, front windshield has 38" of visibility, interior mirror, fold away exterior side mirrors, molded front fenders, right and left doors and rear window have tinted (50%) glass, front and rear windows open, quick release window latches act as emergency exit, rubber sound isolator cab mounts and upholstered interior panels and headliner, textured neoprene floor mat, interior dome light.				
SAFETY		Complies with American National Standards Institute (ANSI B71.4-2012) and applicable ISO EN 5395 (CE) (machine directive 89/392, 91/368, 93/44, 84/538, 89/336) requirements. Optional lights. Meets ANSI/ASAE 5279.12 (Lighting and Marking of Agricultural Equipment on Highways). Foldable ROPS. ISO 21299 certified.				
SOUND PRESSURE OPERATOR EAR**		~80 dB when GM4010-D models (30636 & 30635) have "Quiet Mode" activated by Toro Distributor.				
WARRANTY		Two-year limited warranty. Refer to operator's manual for further details.				
ACCESSORIES		Work light, Road lights consisting of dual taillights, dual headlights, slow moving vehicle sign, turn signal, flasher and lights, Sunshade Beacon				
CUTTING DECKS						
WIDTH OF CUT		Overall: 132" (335 cm), Front: 62" (157.5 cm), Wings: 42" (106.7 cm), Overlap: 7" (17.8 cm).				
MOWING RATE		Mows up to 11.0 acres/h (4.5 hectares/h) at 8.5 mph (13.4 km/h) (assumes no overlap or stops).				
CONSTRUCTION		Welded .100" (25 mm) steel with 7 and 10-gauge steel channel and plate reinforcements, bullnose bumpers.				
DECK DRIVE		Direct mounted hydraulic motor into spindle. Remaining spindle(s) driven by individual B section Kevlar belt. Quick release belt covers.				
HEIGHT-OF-CUT		1"-5" (25-127 mm) in .5" (13 mm) increments.				
SPINDLES		1.25" (3.17 cm) diameter spindle shafts, 9" (22.9 cm) diameter conical ductile iron housing, and 2 greaseable tapered roller bearings.				
BLADES		21.75" (55.2 cm) long, 2.5" (6.4 cm) wide, .25" (.64 cm) thick				
CASTER WHEELS		8 x 3.50-4, 4-ply, smooth, pneumatic, sealed precision ball bearings.				
GROUND FOLLOWING		6" anti-scalp cups on each blade, adjustable skids on each deck, 4 anti-scalp rollers on front deck and 1 on each wing.				
WING PROTECTION		Bi-directional, impact absorption device on each wing deck.				
RECYCLER KIT		Model 30420 will convert decks into Guardian® Recycler® decks.				
MULCHING KIT		Model 30422.				
SKIDS		Reversible polymetric.				

*Specifications and design subject to change without notice. Products depicted in this literature are for demonstration purposes only. Actual products offered for sale may vary in use, design, required attachments and safety features. See distributor for details on all warranties. **Per EN ISO 5395:2013

The Groundsmaster 4000-D & 4010-D are manufactured in Tomah, WI ISO 9002 Certified Plant.



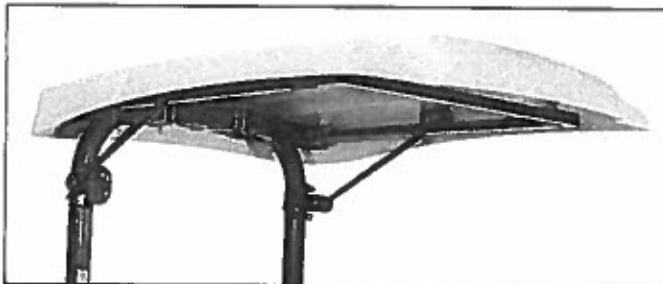
Groundsmaster® 4000-D Attachment Specifications



	ROTARY BROOM, MB MODEL HCT**
TYPE	Windrow type, front mounted hydraulic broom with dual motors. Electric/hydraulic angling, 30° left and right.
BROOM SIZE	32" (81 cm) diameter x 60" (153 cm) wide
BRUSH	Sectional brush with combination polypropylene/wire radial segments.
WEIGHT	460 lbs. (209 kg)
OPTIONS	Dirt Deflector, Storage Stands



	SNOWBLOWER ERSKINE MODEL 2000***
STAGE	2
WIDTH OF CUT	61" (155 cm)
CUTTING HEIGHT	29" (74 cm)
CUTTING EDGE	3/8" x 3" (9.5 mm x 7.6 cm) bolt-on
SKID SHOES	Adjustable
AUGER DIAMETER	16" (41 cm) open flight
FAN DIAMETER	20" (51 cm) 4-blade
CHUTE ROTATION	Hydraulic 270°
SHEAR PROTECTION	Pressure relief
CASTING DISTANCE	Up to 30" (9.14 m)
APPROXIMATE SHIPPING WT.	850 lbs. (386 kg)
HOSES	Included



	SUNSHADE
UNIVERSAL MOUNT SUNSHADE	White, Model 30349
UNIVERSAL MOUNT SUNSHADE	Red, Model 30552



	TWO-POST ROPS EXTENSION SYSTEM
GM4000 MODELS	Fits Models 30605 or 30609
TWO-POST ROPS EXTENSION KIT	Base steel frame attached to existing ROPS and includes a white sunshade. Model 31352
EXTERIOR MIRROR	Quantity (1) Part Number 130-5448
INTERIOR MIRROR	Quantity (1) Part Number 130-5449
ABRASION-RESISTANT POLYCARBONATE WIND SCREEN	Improved resistance to golf ball impacts or vandalism. Model 31324
TEMPERED GLASS WINDSHIELD	Similar safety glass used in Toro all-season safety cabs. Model 31325
WINDSHIELD WIPER KIT FOR TEMPERED GLASS WINDSHIELD	For use with the tempered glass windshield only. Not for use with the polycarbonate wind screen. Model 31311
OPERATOR FAN & INTERIOR HEADLINER KIT	Overhead fan with adjustable speeds - mounts directly over operator. Part Number 132-3435
WIRE HARNESS KIT	Required for all electrical accessories such as wipers, lights and fan. Part Number 122-0729

*Specifications and design subject to change without notice.

** Manufactured by M B Comcan Inc.

*** Manufactured by Erskine Attachments.

Note: The Toro Company does not manufacture or sell the snowblower or rotary broom, nor does Toro guarantee these accessories in any manner whatsoever.





Quotation for Auburn Area Rec & Pk Dist

Date: April 30, 2018

Quote No:609452-00

Standard Terms and Conditions

Prices, including all finance options, are valid for 30 days from date of quotation. Open Account Terms are N30, subject to credit approval. Used and demo equipment is in high demand and availability is subject to change. Delivery is FOB Destination, unless otherwise stated

Office Locations

Northern California:

5646 W Barstow Ave Ste 104
Fresno, CA 93722
Fax: (559) 277-7123

2438 Radley Court
Hayward, CA 94545
Fax: (510) 785-3576

11373 Sunrise Gold Circle
Rancho Cordova, CA 95742
Fax: (800) 241-1997

Southern California:

79-253 Country Club Drive
Bermuda Dunes, CA 92203
Fax: (760) 345-4297

955 Beacon Street
Brea, CA 92821
Fax: (800) 775-8873

2110 La Mirada Ste 100
Vista, CA 92083
Fax: (760) 734-4285

Pacific Northwest:

11175 SW Elligsen Way
Sherwood, OR 97140
Ph: (503) 691-0250

20224 80th Ave South
Kent, WA 98032
Fax: (253) 872-6942

2824 East Garland
Spokane, WA 99207
Fax: (509) 483-7563

Quote Id: 16230040

Prepared For:
Auburn Parks



Prepared By: **Anthony Bertoldi**

Valley Truck and Tractor Inc
10490 E Stockton Blvd Ste400
Elk Grove, CA 95624

Tel: 916-714-2600

Fax: 916-714-2661

Email: abertoldi@vtco.net

Date: 13 October 2017

Offer Expires: 30 November 2017

Confidential

Turf Star, Inc.
 Expiration Date: 8/7/2018
 Quote Name: Auburn Recreation & Park District
 Quote ID: 2298574

**Auburn Park & Recreation
 Auburn, CA**

May 9, 2018

Qty	Model Number	Description	Unit Price	Extension
1	30609	GM 4000-D (Tier 4 Final Compliant) (30609 / 30609A)	\$56,542.94	\$56,542.94
1	30420	Guardian Recycler Conversion Kit	\$1,059.36	\$1,059.36
1	108-1450	BLADE SERVICE PACK, 21.75 IN (107-0214)	\$84.38	\$84.38
1	CTF-17	[Non-Toro Part]: Cool top	\$550.00	\$550.00
1	CT-SHIM	[Non-Toro Part]: CT Shim kit	\$35.00	\$35.00
1	Trade-In	[Non-Toro Part]: John Deere 1600	\$2,500.00	\$2,500.00

TOTALS	
Equipment Total	\$58,271.68
Toro Protection Plus	\$0.00
Trade Ins	\$0.00
Estimated Sales/Use Tax	\$4,224.70
Total	\$62,496.38



Quote Summary

Prepared For:
Auburn Parks
CA

Prepared By:
Anthony Bertoldi
Valley Truck and Tractor Inc
10490 E Stockton Blvd Ste400
Elk Grove, CA 95624
Phone: 916-714-2600
abertoldi@vttco.net

Quote Id: 16230040
Created On: 13 October 2017
Last Modified On: 13 October 2017
Expiration Date: 30 November 2017

Equipment Summary	Suggested List	Selling Price	Qty	Extended
JOHN DEERE 1600 Turbo Series III Wide Area Mower with 4-Post ROPS	\$ 70,939.79	\$ 52,270.91 X	1 =	\$ 52,270.91
Equipment Total				\$ 52,270.91

Quote Summary

Equipment Total	\$ 52,270.91
CA Tire Fee	\$ 7.00
SubTotal	\$ 52,277.91
Sales Tax - (7.25%)	\$ 3,789.64
Est. Service Agreement Tax	\$ 0.00
Total	\$ 56,067.55
Down Payment	(0.00)
Rental Applied	(0.00)
Balance Due	\$ 56,067.55

Salesperson : X _____

Accepted By : X _____



JOHN DEERE

Selling Equipment



Quote Id: 16230040

JOHN DEERE 1600 Turbo Series III Wide Area Mower with 4-Post ROPS

Hours:

Suggested List

Stock Number:

\$ 70,939.79

Selling Price

\$ 52,270.91

Code	Description	Qty	Unit	Extended
0730TC	1600 Turbo Series III Wide Area Mower with 4-Post ROPS	1	\$ 69,577.00	\$ 69,577.00

Standard Options - Per Unit

001A	United States and Canada	1	\$ 0.00	\$ 0.00
0443	US English w/ Spanish (Bi-Lingual) Operator's Manual	1	\$ 0.00	\$ 0.00
Standard Options Total				\$ 0.00

Dealer Attachments

BTC10335	Tricycler Mulching Kit	1	\$ 612.79	\$ 612.79
Dealer Attachments Total				\$ 612.79

Other Charges

Setup	1	\$ 750.00	\$ 750.00
Other Charges Total			\$ 750.00

Suggested Price \$ 70,939.79

Customer Discounts

Customer Discounts Total \$ -18,668.88

Total Selling Price \$ 52,270.91



JOHN DEERE



Quote Id: 16230040

Valley Truck and Tractor Inc - ELK GROVE, CA
10490 E Stockton Blvd Ste400
ELK GROVE, CA 95624
Phone: 916-714-2600
E-Mail: general@vttco.net

CONFIDENTIAL

Privacy and Data Policy Overview
VALLEY TRUCK AND TRACTOR COMPANY

Effective Date: June 15, 2014

This is only a summary of our Privacy and Data Policy. For more information you can review a complete version of our Privacy and Data Policy located on our website at www.valleytruckandtractor.com or by requesting a copy at our Administrative and Training Center Located at 1003 Stabler Lane in Yuba City or by calling us at (530) 673-4615

This Privacy and Data Policy Overview provides a description of the privacy and data use practices of Valley Truck and Tractor Company (“us”, “we” or “our”) in connection with our receipt, collection and use of data and information from you as our customer, visitor, or user, as applicable. The policy may be changed or updated from time to time. If there is any conflict between this Overview and our full Privacy and Data Policy, the terms of our full Privacy and Data Policy will control.

Collection of Data:

The types of information we collect and share depend on the products or services you purchase, license or access from us or third parties through which you have authorized us to receive information (such as through John Deere’s JD Link™ Telematics system or Trimble’s “Connected Farm” system). We generally receive, collect, use and share both Customer Data (including social security numbers, names, addresses, phone numbers, and other personal information) and Machine Data (information related to the performance, use, and location of equipment or computers with various information collection devices) as described in this Policy (collectively “Data”). **You agree to notify all personnel that use any tracked equipment that their use and location is remotely monitored.** If you need to update or change any information which you previously provided to us then you may contact us at privacy@vtco.net.

Protection of Data:

We strive to protect your Data using commercially reasonable standards. We use a variety of commercially reasonable security technologies to help protect your Data from unauthorized access, use, or disclosure. However, the use of such standards and security technologies is not, and should not be considered to be, any type of guarantee or warranty by us that your Data will not be accessed by third parties.

Sharing and Use of Data:

We use your Data to provide products, services and information to you. Some of the services are designed to allow faster communications and responsiveness between you and us to ensure that we provide services to you as efficiently as possible. We may also review equipment diagnostic information remotely to diagnose and recommend equipment maintenance and repairs. We share your information with certain third parties in order to better serve you or upon your request or approval. These third parties may include equipment suppliers, financing institutions or other third party service providers who assist us in providing the products and services you request or their respective subsidiaries or affiliates. We also may share your information with our marketing, technical, accounting, legal or other professionals to assist us in our business operations. If you purchase products for personal, family, or household use through financing that is provided by us or facilitated by us, you may request that we not share your personal information derived from that transaction with unaffiliated third parties by returning the opt-out form at the bottom of our Privacy and Data Use Policy.

If you have any additional questions, please contact us at privacy@vtco.net

JACOBSEN DIVISON OF TEXTRON INC
National NJPA Quotation Form

1451 Marvin Griffin Road
 Augusta, GA 30906-3852
 National NJPA Contract # 062117-JCS
 Contract Dates: 08/18/16 - 08/18/2021
 Terms: Net 30 Days

Member #
 135676

Phone: (706)755-9290
 Fax:
 E-Mail: nstark@textron.com
 Duns #: 023211535

Date: 4.16.18 Ship To: Jacobsen West
 Agency Name: Auburn Area Recreation and Park District Sacramento, CA
 Address: ATTN: Nolan Stark
 City, State, Zip: _____
 Contact: Jesse Williams Fax Number: _____
 Phone Number: (530)308-6105

Model	Part #	Qty		Retail Price	NJPA Price
Jacobsen HR600	'070546-6613010	1		\$79,597.00	\$58,901.78
Accessories / Options					
Description			Factory Installed		
Cool Top Two Speed Fan	CTFC	1	xx	\$683.43	\$505.00
Wing Decks Mulching Kit	LMAC656-F	1	xx	\$1,028.00	\$760.72
Front Deck Mulching Kit	'LMAC654-F	1	xx	\$685.00	\$506.90
		0	xx	\$0.00	\$0.00
		0	xx	\$0.00	\$0.00
		0	xx	\$0.00	\$0.00
		0	xx	\$0.00	\$0.00
		0	xx	\$0.00	\$0.00
		0	xx	\$0.00	\$0.00
		1	xx	\$0.00	\$0.00
		0	xx	\$0.00	\$0.00
		1	xx	\$0.00	\$0.00
		0	xx	\$0.00	\$0.00
		0	xx	\$0.00	\$0.00
		0	xx	\$0.00	\$0.00
		0	xx	\$0.00	\$0.00
		0	xx	\$0.00	\$0.00
		0	xx	\$0.00	\$0.00
		0	xx	\$0.00	\$0.00
		0	xx	\$0.00	\$0.00
		0	xx	\$0.00	\$0.00
Factory Freight To California	Freight	0		\$0.00	\$0.00
Sub Total	Sub-Total			\$81,993.43	\$60,674.40
Labor to Install Cab Enclosure	Labor			\$0.00	\$0.00
Additional Dealer Prep Charges	Prep	1		\$175.00	\$175.00
CA State Tires Fee	CA Fee	4		\$7.00	\$7.00
CA State Sales Tax 7.75%	CA Tax	1			\$0.00
GRAND TOTALS	Total			\$82,175.43	\$60,856.40

Comments: Shipping is FOB Destination within the 48 contiguous United States
 Delivery: Sixty (60) Days, From receipt of order to Customer if built. 30-45 Days if Stock On Hand
 Delivery: Ninety (90) Days, From receipt of order.(Custom Work Requested)

Jacobsen Quote
 Jacobsen HR 800

Nolan Stark
Territory Sales Manager - California



Jacobsen Quote
Jacobsen HR 800

FEIN #: 05 03
15468

Extended Price
\$58,901.78
\$505.00
\$760.72
\$506.90
\$0.00
\$0.00
\$0.00
\$0.00
\$0.00
\$0.00
\$0.00
\$0.00
\$0.00
\$0.00
\$0.00
\$0.00
\$0.00
\$0.00
\$0.00
\$0.00
\$0.00
\$0.00
\$0.00
\$0.00
\$0.00
\$0.00
\$60,674.40
\$0.00
\$0.00
\$0.00
\$4,398.89
\$65,073.29



Joe Fecko

From: Jesse Williams
Sent: Thursday, May 3, 2018 2:40 PM
To: Kahl Muscott; Brian Simpson
Cc: Joe Fecko; Veona Galbraith
Subject: Re: Meadow Vista Mower
Attachments: Jacobsen Info Sheet.pdf; Jacobsen Quote.xlsx; Quote for new John Deere 1600 Mower.pdf; Toro Quote 2.pdf

Attached are three separate bids for replacing this unit. We had the opportunity to demo the Toro unit for 3 days and the Jacobsen unit for 12 days. We have decided that the Toro unit is the unit we would like to purchase. It is more user friendly, takes only a few minutes to adjust the deck heights and has a better service department.

Some issues we had with the Jacobsen unit was one of the blades stopped working 7 days into using it (each blade has its own motor) and it took half an hour to adjust the deck heights.

Let me know if you need anything else.

From: Jesse Williams
Sent: Thursday, April 19, 2018 2:46:58 PM
To: Kahl Muscott; Brian Simpson
Cc: Joe Fecko; Veona Galbraith
Subject: Re: Meadow Vista Mower

We will have a demo unit to keep us on schedule through Friday 26th. After this we will not have a mower again.

From: Jesse Williams
Sent: Monday, April 16, 2018 9:32:28 AM
To: Kahl Muscott; Brian Simpson
Cc: Joe Fecko; Veona Galbraith
Subject: Re: Meadow Vista Mower

What we have been doing the last few weeks is shuffling equipment around as we are able. It is far from ideal and has resulted in minimal mowing but it is the best we can do until we get this unit fixed or replaced. I am also exploring trying to get a demo unit we can "demo" in the meantime. I have a call into Toro and John Deere at this point.

From: Kahl Muscott
Sent: Friday, April 13, 2018 2:18:51 PM
To: Jesse Williams; Brian Simpson
Cc: Joe Fecko; Veona Galbraith
Subject: RE: Meadow Vista Mower

We will let you know Monday.